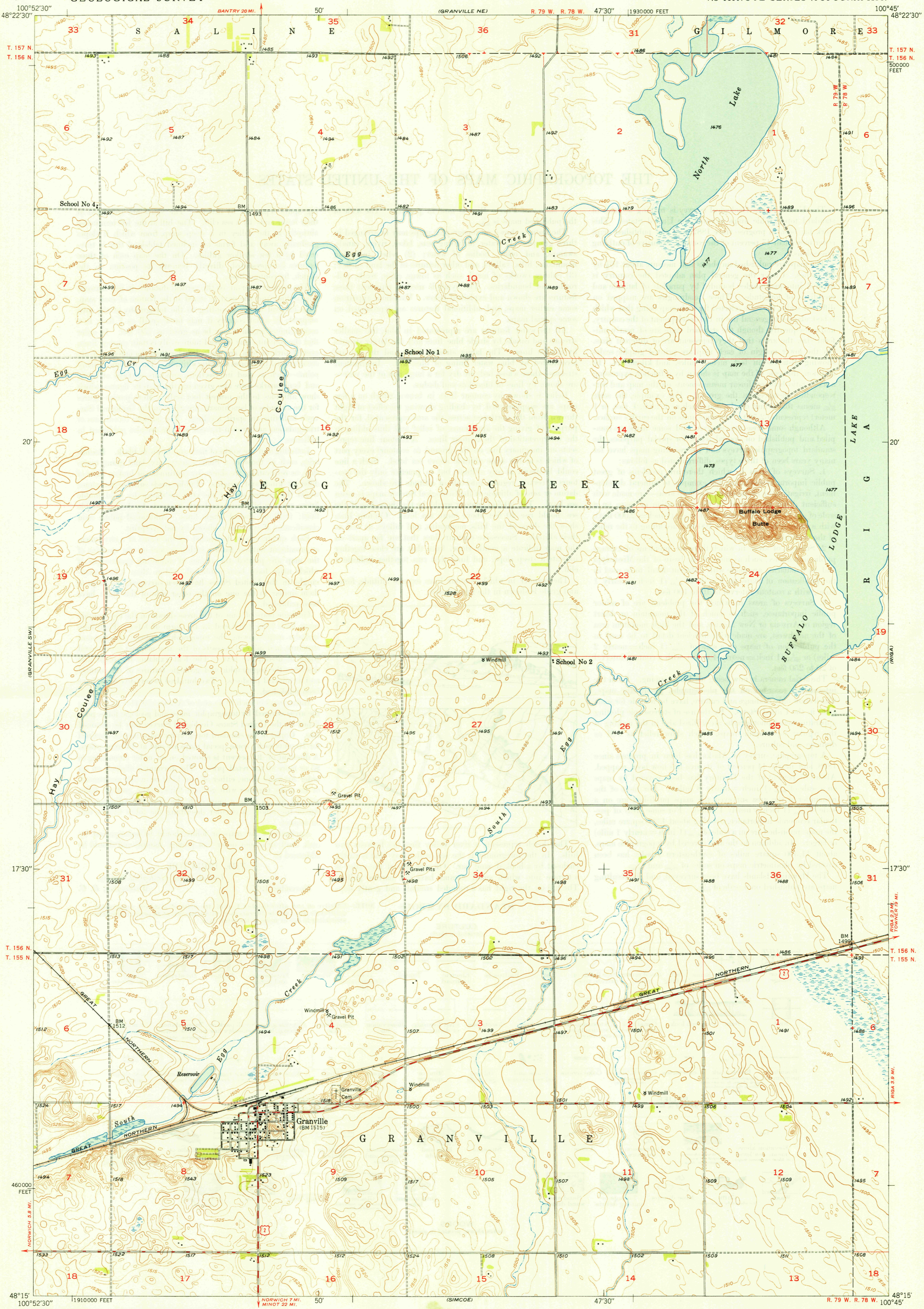
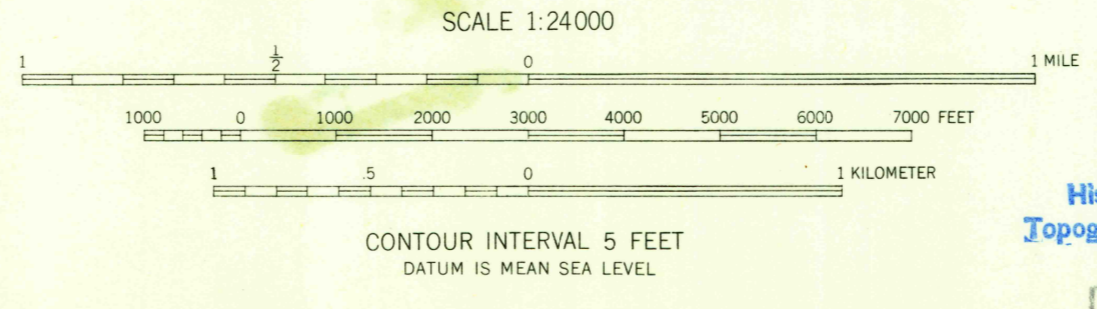


U. S. G. S.  
FILE COPY  
Inspection and Editing.



Maped, edited, and published by the Geological Survey as part of the Department of the Interior program for the development of the Missouri River Basin  
Control by USGS and USC&GS  
Culture and drainage in part compiled from aerial photographs taken 1946  
Topography by plane-table methods 1948  
Polyconic projection. 1927 North American datum  
10,000-foot grid based on North Dakota coordinate system, north zone

APPROXIMATE MEAN DECLINATION, 1948



ROAD CLASSIFICATION  
HARD-SURFACE ALL WEATHER ROADS DRY WEATHER ROADS  
Heavy-duty. —+ LANE'S LANE Improved dirt. —+  
Medium-duty. —+ LANE'S LANE Unimproved dirt. —+  
Loose-surface, graded, or narrow hard-surface. —+  
U. S. Route State Route

U. S. G. S.  
FILE COPY  
Inspection and Editing.

GRANVILLE, N. DAK.  
N4815—W10045/7.5  
EDITION OF 1949

THIS MAP COMPLIES WITH NATIONAL MAP ACCURACY STANDARDS  
FOR SALE BY U. S. GEOLOGICAL SURVEY, DENVER, COLORADO OR WASHINGTON 25, D. C.