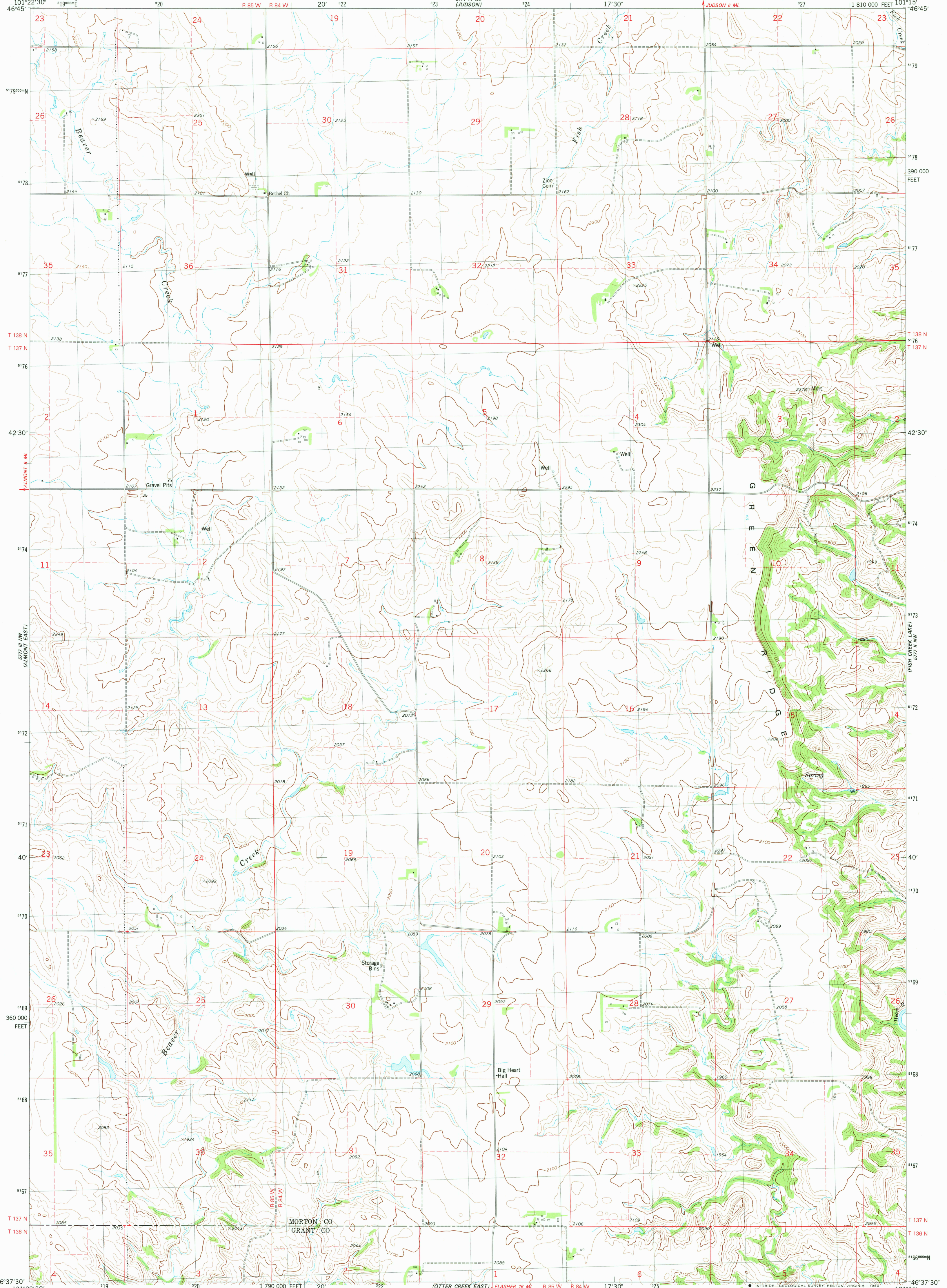


5777 III SW  
(NEW SALEM)

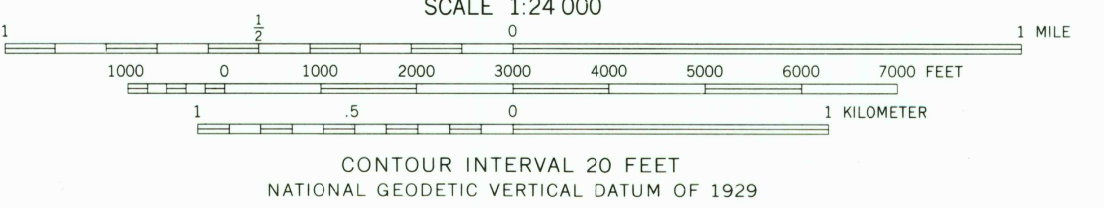
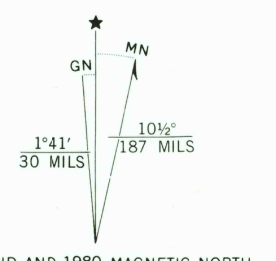
UNITED STATES  
DEPARTMENT OF THE INTERIOR  
GEOLOGICAL SURVEY

GREEN RIDGE QUADRANGLE  
NORTH DAKOTA  
7.5 MINUTE SERIES (TOPOGRAPHIC)

5777 SW  
(WEST BISMAR)



Mapped, edited, and published by the Geological Survey  
Control by USGS and NCS/NOAA  
Topography by photogrammetric methods from aerial photographs taken 1974. Field checked 1975. Map edited 1980  
Projection and 10,000-foot grid ticks: North Dakota coordinate system, south zone (Lambert conformal conic) 1000-meter Universal Transverse Mercator grid, zone 14 1927 North American datum  
To place on the predicted North American Datum 1983 move the projection lines 5 meters north and 35 meters east as shown by dashed corner ticks  
Fine red dashed lines indicate selected fence lines



ROAD CLASSIFICATION

Primary highway, hard surface	Light-duty road, hard or improved surface
Secondary highway, hard surface	Unimproved road
Interstate Route	U.S. Route
	State Route

THIS MAP COMPLIES WITH NATIONAL MAP ACCURACY STANDARDS  
FOR SALE BY U.S. GEOLOGICAL SURVEY, DENVER, COLORADO 80225, OR RESTON, VIRGINIA 22092  
AND BY THE STATE WATER COMMISSION, BISMARCK, NORTH DAKOTA 58501  
A FOLDER DESCRIBING TOPOGRAPHIC MAPS AND SYMBOLS IS AVAILABLE ON REQUEST

USGS  
Historical File  
Topographic Division  
GREEN RIDGE, N. DAK.  
N4637.5-W10115.7.5  
1980  
DMA 5777 III NE-SERIES V871

OCT 22 1980

1050