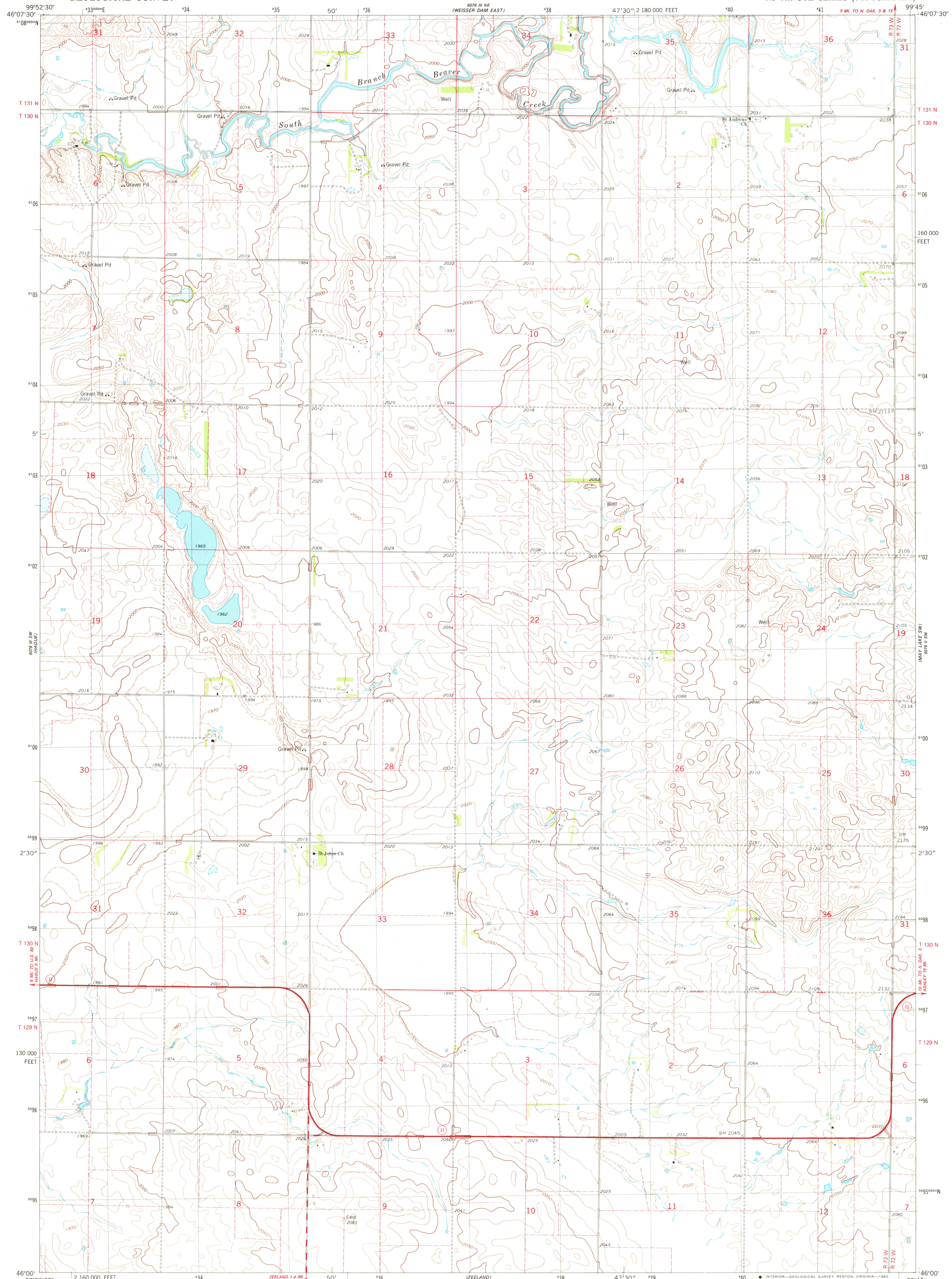


UNITED STATES
DEPARTMENT OF THE INTERIOR
GEOLOGICAL SURVEY

HAGUE SE QUADRANGLE
NORTH DAKOTA—MCINTOSH CO.
7.5 MINUTE SERIES (TOPOGRAPHIC)



Mapped, edited, and published by the Geological Survey

Control by USGS and NOS/NOAA

Topography by photogrammetric methods from aerial photographs taken 1974-75. Field checked 1976. Map edited 1980

Projection and 10,000-foot grid ticks: North Dakota coordinate system, south zone (Lambert conformal conic)

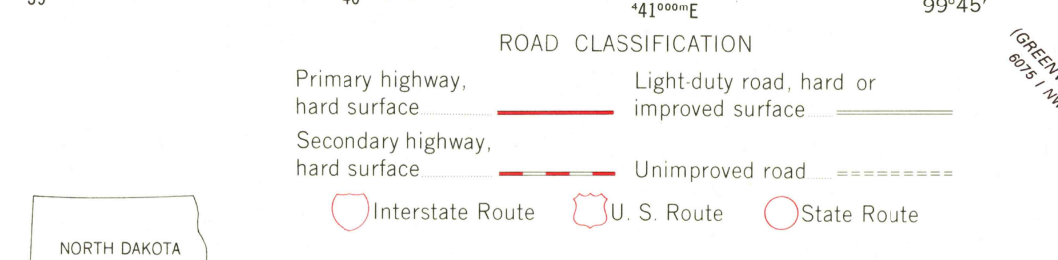
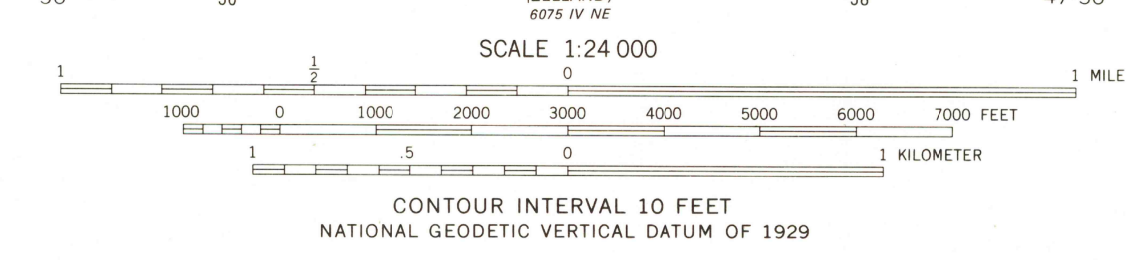
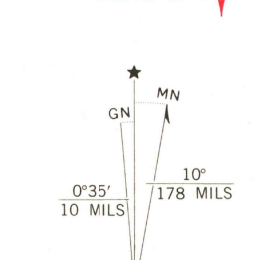
1000-meter Universal Transverse Mercator grid, zone 14

1927 North American Datum

To place on the predicted North American Datum 1983 move the projection lines 6 meters north and 33 meters east as shown by dashed corner ticks

Fine red dashed lines indicate selected fence and field lines where generally visible on aerial photographs

This information is unchecked



SCALE 1:24 000
CONTOUR INTERVAL 10 FEET
NATIONAL GEODETIC VERTICAL DATUM OF 1929

THIS MAP COMPLIES WITH NATIONAL MAP ACCURACY STANDARDS FOR SALE BY U.S. GEOLOGICAL SURVEY, DENVER, COLORADO 80225, OR RESTON, VIRGINIA 22092 AND STATE WATER COMMISSION, BISMARCK, NORTH DAKOTA 58501 A FOLDER DESCRIBING TOPOGRAPHIC MAPS AND SYMBOLS IS AVAILABLE ON REQUEST

USGS Historical File HAGUE SE, N. DAK. N4600-W9945/7.5 Topographic Division

AUG 15 1980

2200

DMA 6076 III SE-SERIES V871