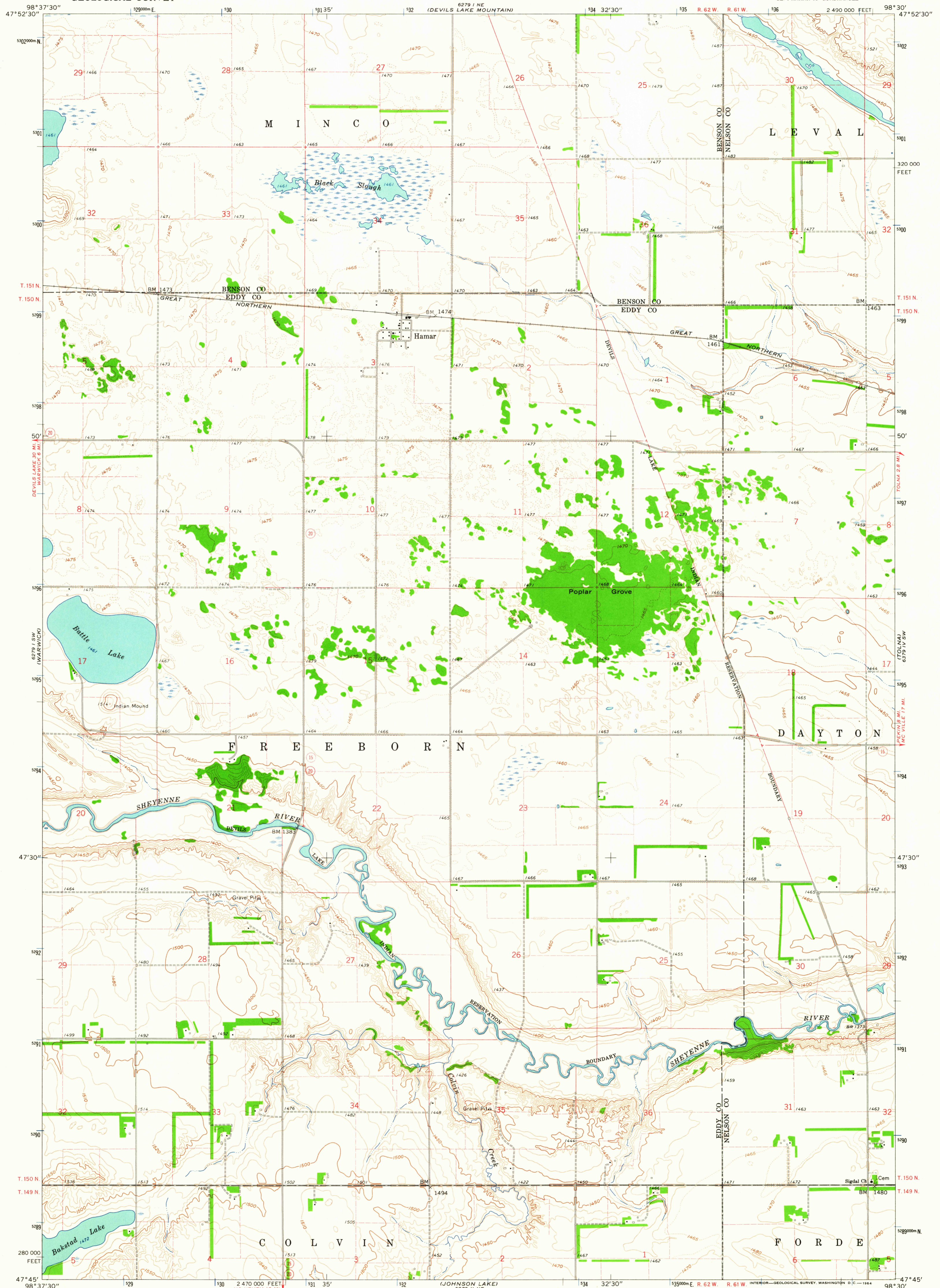
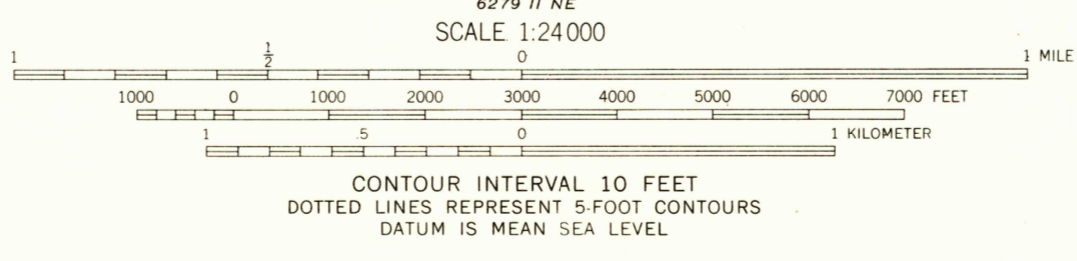


UNITED STATES  
DEPARTMENT OF THE INTERIOR  
GEOLOGICAL SURVEY

HAMAR QUADRANGLE  
NORTH DAKOTA  
7.5 MINUTE SERIES (TOPOGRAPHIC)  
SE/4 HAMAR 15' QUADRANGLE

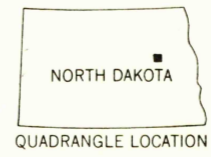


Mapped, edited, and published by the Geological Survey as part of the Department of the Interior program for the development of the Missouri River Basin Control by USGS and USC&GS  
Topography by photogrammetric methods from aerial photographs taken 1958 and planetable surveys 1962  
Polyconic projection. 1927 North American datum 10,000-foot grid based on North Dakota coordinate system, north zone 1000-meter Universal Transverse Mercator grid ticks, zone 14, shown in blue  
Fine red dashed lines indicate selected fence and field lines where generally visible on aerial photographs. This information is unchecked



USGS  
Historical File  
Topographic Division

ROAD CLASSIFICATION  
Light-duty ——— Unimproved dirt ———  
○ Slate Route



HAMAR, N. DAK.  
SE/4 HAMAR 15' QUADRANGLE  
N4745—W9830/7.5

1962

AMS 6279 I SE—SERIES V871

JAN 2 8 1964

2200