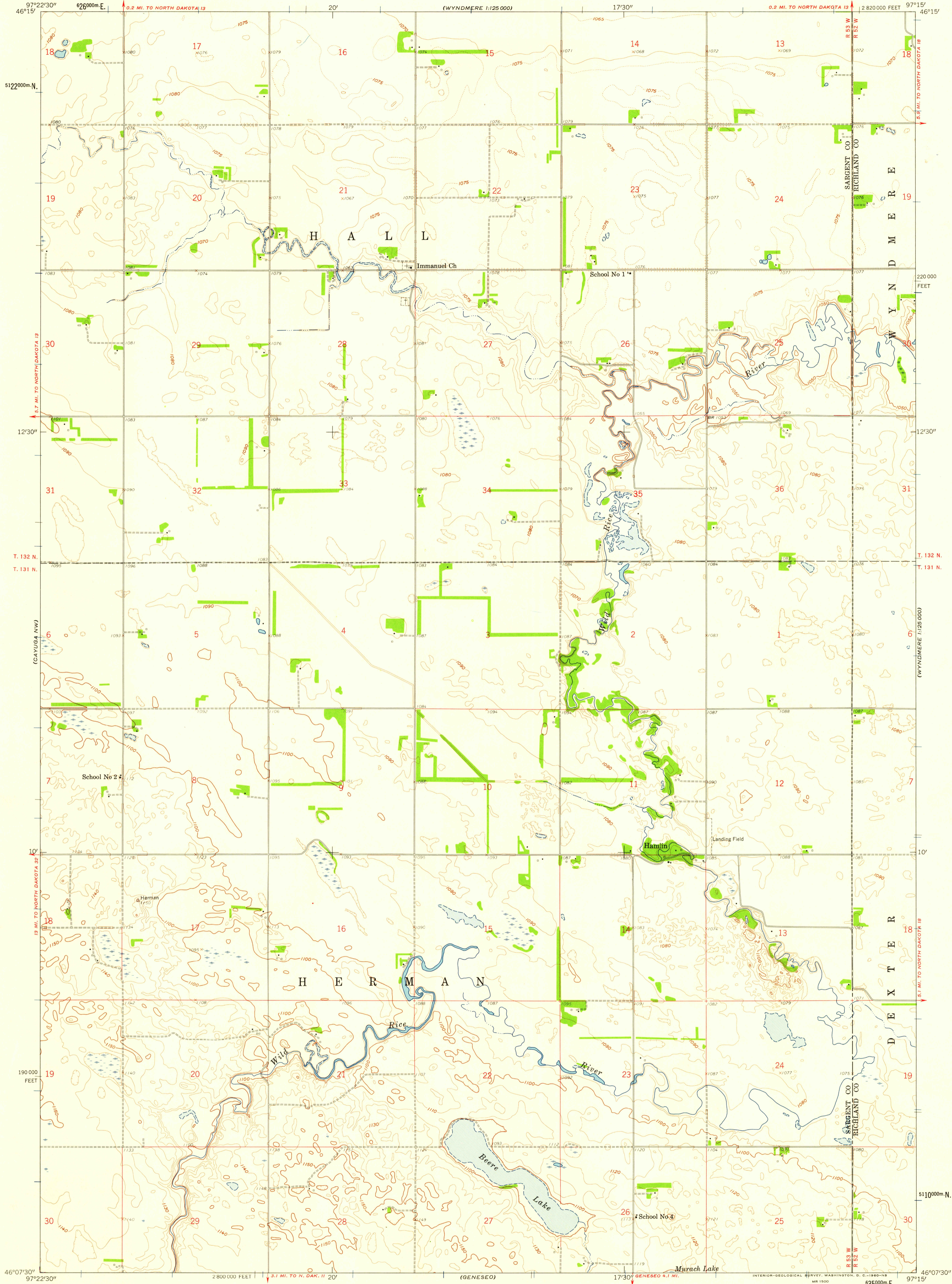


UNITED STATES
DEPARTMENT OF THE INTERIOR
GEOLOGICAL SURVEY

HAMLIN QUADRANGLE
NORTH DAKOTA
7.5 MINUTE SERIES (TOPOGRAPHIC)



Mapped, edited, and published by the Geological Survey as part of the Department of the Interior program for the development of the Missouri River Basin. Control by USGS and USC&GS. Topography from aerial photographs by photogrammetric methods. Aerial photographs taken 1956. Field check 1958. Polyconic projection. 1927 North American datum. 10,000-foot grid based on North Dakota coordinate system, south zone. 1000-meter Universal Transverse Mercator grid ticks, zone 14, shown in blue.

TRUE NORTH
MAGNETIC NORTH
APPROXIMATE MEAN DECLINATION, 1958

SCALE 1:24,000
1 1000 0 1000 2000 3000 4000 5000 6000 7000 FEET
1 1 2 3 4 5 6 7 8 9 10 KILOMETER
CONTOUR INTERVAL 10 FEET
DOTTED LINES REPRESENT 5-FOOT CONTOURS
DATUM IS MEAN SEA LEVEL

THIS MAP COMPLIES WITH NATIONAL MAP ACCURACY STANDARDS
FOR SALE BY U. S. GEOLOGICAL SURVEY, DENVER 25, COLORADO OR WASHINGTON 25, D. C.
AND BY THE STATE WATER CONSERVATION COMMISSION, BISMARCK, NORTH DAKOTA
A FOLDER DESCRIBING TOPOGRAPHIC MAPS AND SYMBOLS IS AVAILABLE ON REQUEST

USGS
Historical File
Topographic Division
NORTH DAKOTA
QUADRANGLE LOCATION

ROAD CLASSIFICATION
Light-duty Unimproved dirt

HAMLIN, N. DAK.
N4607.5-W9715/7.5
1958

U.S.G.S.
FILE COPY
TOPOGRAPHIC DIVISION

FEB 11 1960

2005