

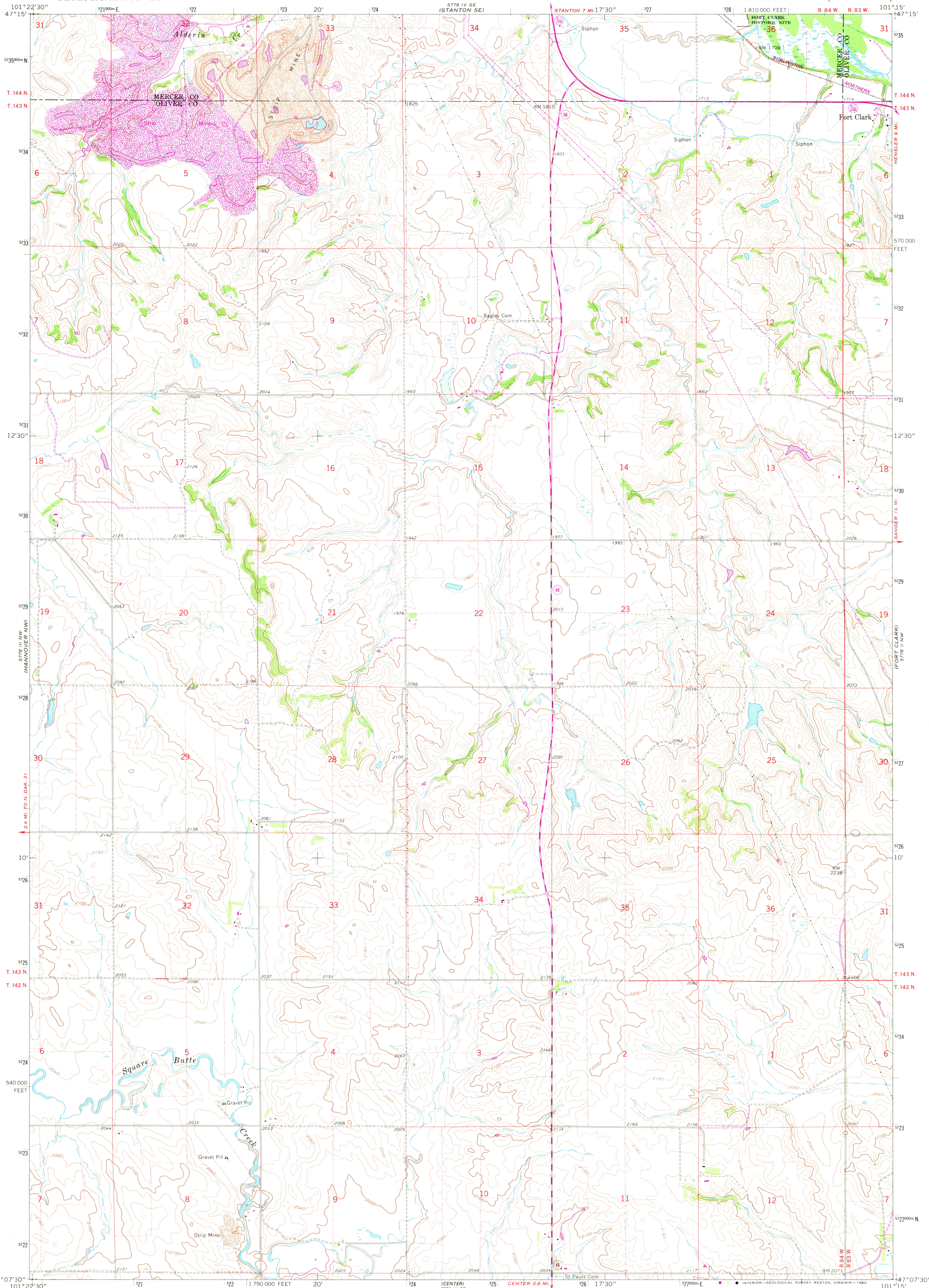
578 IV SE
(STANTON)

UNITED STATES
DEPARTMENT OF THE INTERIOR
GEOLOGICAL SURVEY

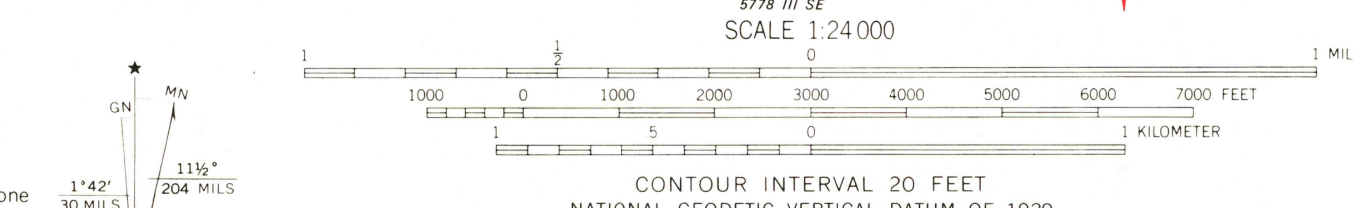
STATE OF NORTH DAKOTA
WATER COMMISSION

HANNOVER NE QUADRANGLE
NORTH DAKOTA
7.5 MINUTE SERIES (TOPOGRAPHIC)

578 IV SW
(WASHEBURT SW)



Mapped, edited, and published by the Geological Survey
Control by USGS and USC&GS
Topography by photogrammetric methods from aerial photographs taken 1967. Field checked 1968
Polyconic projection
10,000-foot grid based on North Dakota coordinate system, south zone 1000-meter Universal Transverse Mercator grid ticks, zone 14, shown in blue. 1927 North American Datum
To place on the predicted North American Datum 1983 move the projection lines 5 meters north and 35 meters east as shown by dashed corner ticks
Fine red dashed lines indicate selected fence and field lines where generally visible on aerial photographs. This information is unchecked
There may be private inholdings within the boundaries of the National or State reservations shown on this map



ROAD CLASSIFICATION
Primary highway, all weather, hard surface
Secondary highway, all weather, weather
Light duty road, all weather, improved surface
Unimproved road, fair or dry surface
weather

Interstate Route U.S. Route State Route

USCS Historical File
Topographic Series
HANNOVER NE, N. DAK.
N4707.5-W10115.7.5
1968
PHOTOREVISED 1980
DMA 5778 III NE-SERIES V871

THIS MAP COMPLIES WITH NATIONAL MAP ACCURACY STANDARDS
FOR SALE BY U.S. GEOLOGICAL SURVEY, DENVER, COLORADO 80225, OR RESTON, VIRGINIA 22092
AND BY THE STATE WATER COMMISSION, BISMARCK, NORTH DAKOTA 58501
A FOLDER DESCRIBING TOPOGRAPHIC MAPS AND SYMBOLS IS AVAILABLE ON REQUEST

Revisions shown in purple and woodland compiled from aerial photographs taken 1977 and other source data
This information not field checked. Map edited 1980

NOV - 5 1980
2050