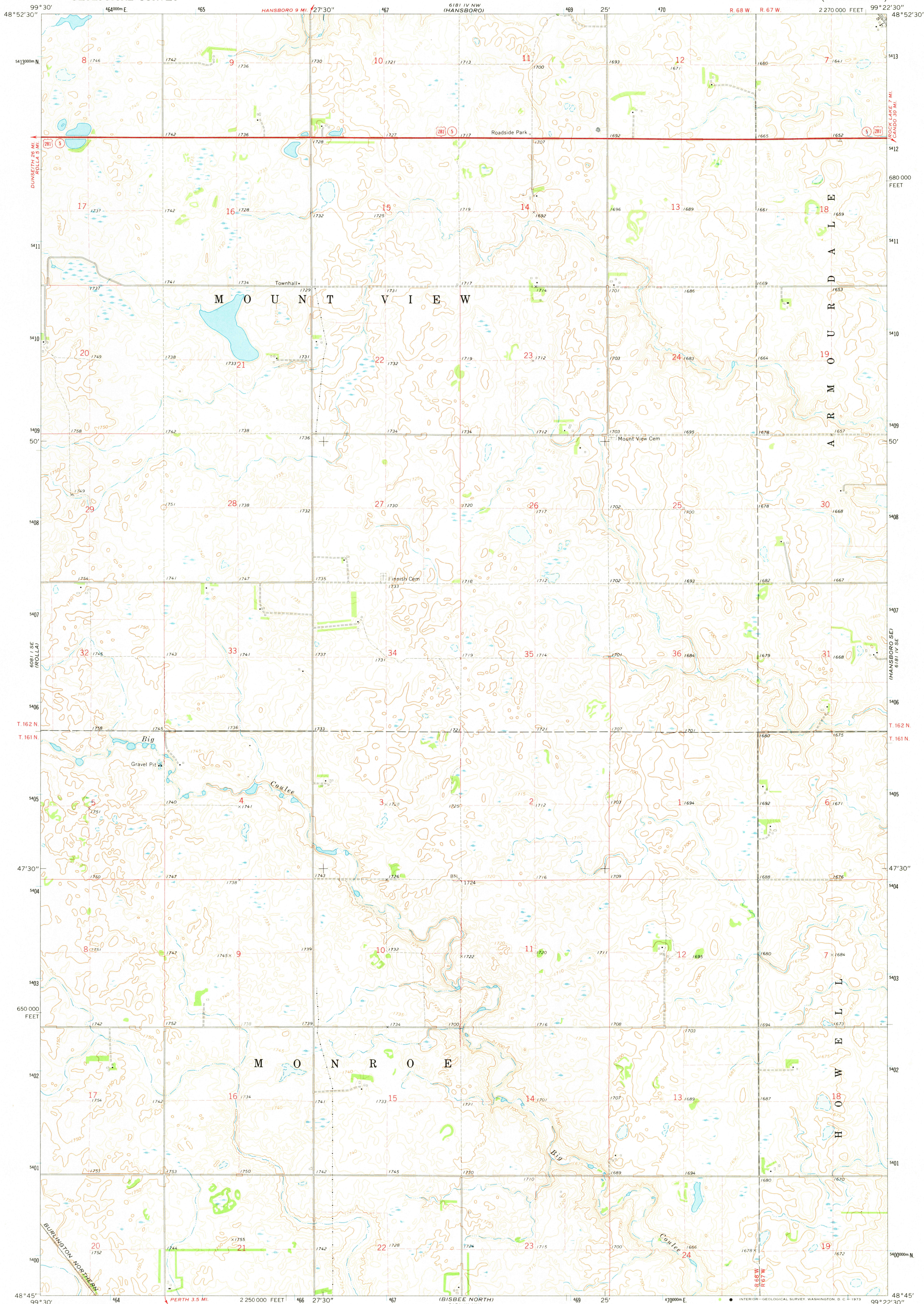


609 1 NE
ROLLA 9 MI

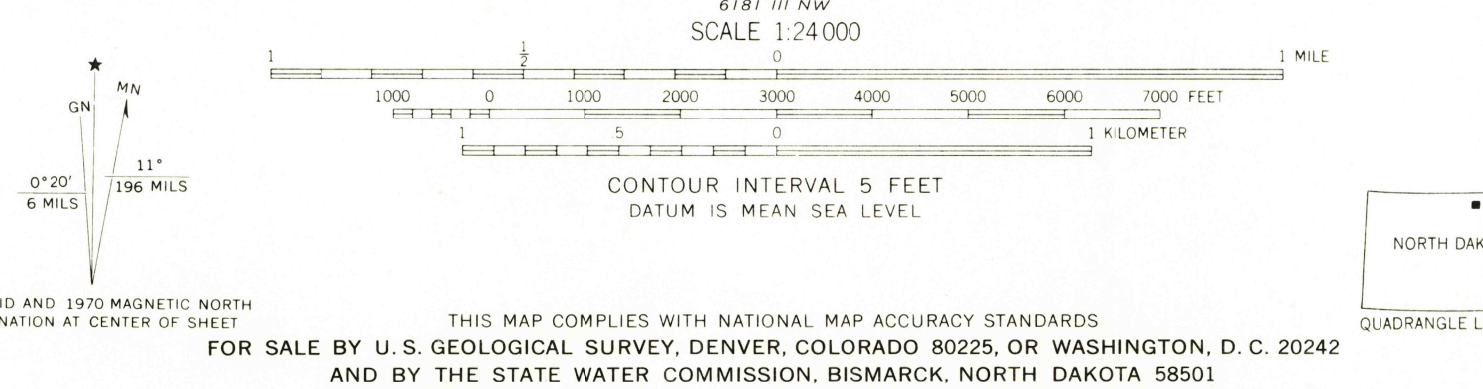
UNITED STATES
DEPARTMENT OF THE INTERIOR
GEOLOGICAL SURVEY

HANSBORO SW QUADRANGLE
NORTH DAKOTA—TOWNER CO.
7.5 MINUTE SERIES (TOPOGRAPHIC)

618 1 NE
HANSBORO NE



Mapped, edited, and published by the Geological Survey
Control by USGS and USC&GS
Topography by photogrammetric methods from aerial
photographs taken 1965. Field checked 1970
Polyconic projection. 1927 North American datum
10,000-foot grid based on North Dakota coordinate system,
north zone
1000-meter Universal Transverse Mercator grid ticks,
zone 14, shown in blue
Fine red dashed lines indicate selected fence and field lines
where generally visible on aerial photographs
This information is unchecked



ROAD CLASSIFICATION
Primary highway, hard surface
Secondary highway, hard surface
Light-duty road, hard or improved surface
Unimproved road
Interstate Route
U. S. Route
State Route

THIS MAP COMPLIES WITH NATIONAL MAP ACCURACY STANDARDS
FOR SALE BY U. S. GEOLOGICAL SURVEY, DENVER, COLORADO 80225, OR WASHINGTON, D. C. 20242
AND BY THE STATE WATER COMMISSION, BISMARCK, NORTH DAKOTA 58501
A FOLDER DESCRIBING TOPOGRAPHIC MAPS AND SYMBOLS IS AVAILABLE ON REQUEST

HANSBORO SW, N. DAK.
N4845—W9922.5/7.5
1970
AMS 6181 IV SW—SERIES V871

608 1 SE
ROLLA 9 MI

MSGS
HISTORICAL FILE
TOPOGRAPHIC DIVISION

FEB 26 1973
2625