

618 W NW
(KESWICK)

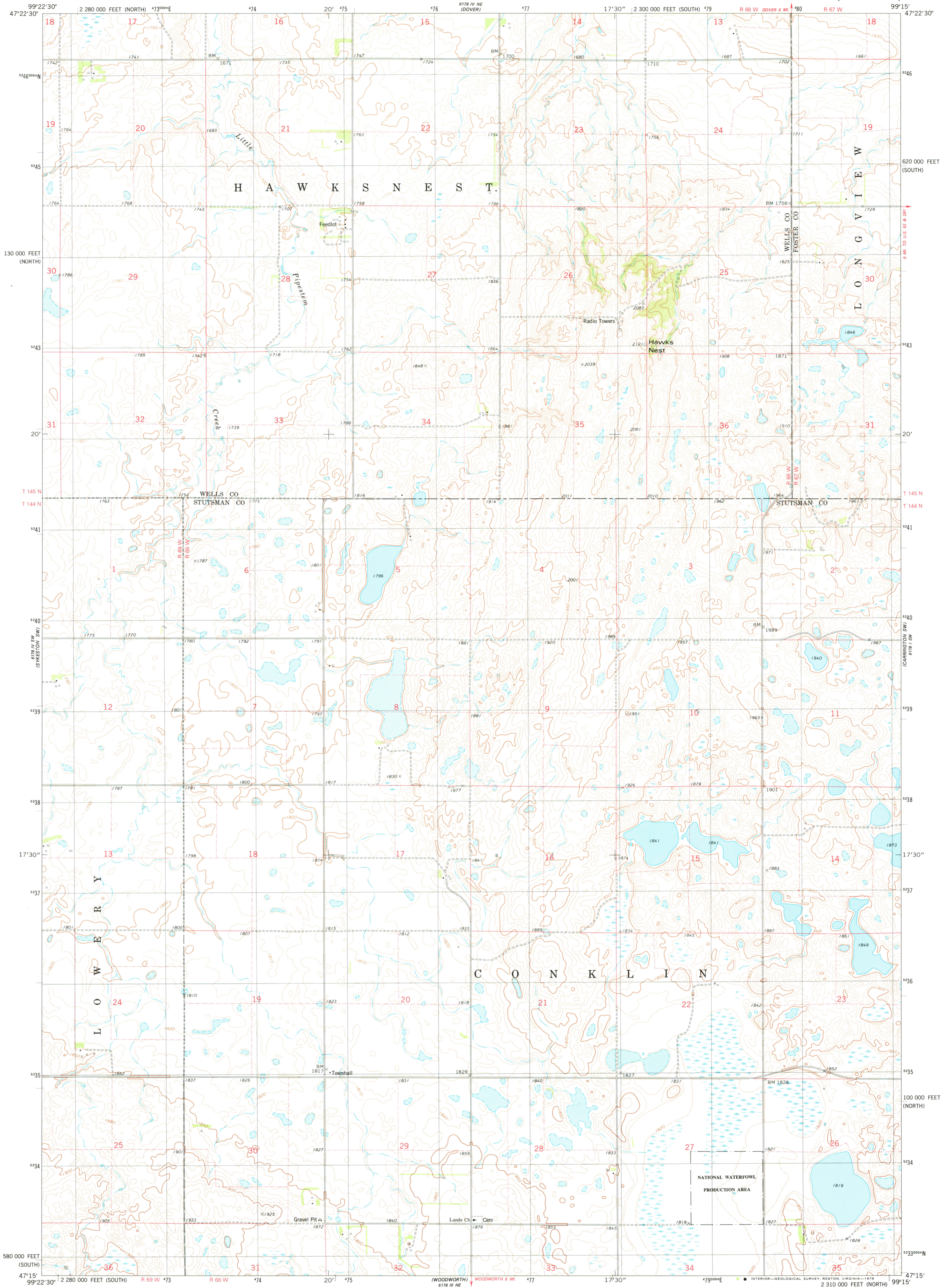
UNITED STATES
DEPARTMENT OF THE INTERIOR
GEOLOGICAL SURVEY



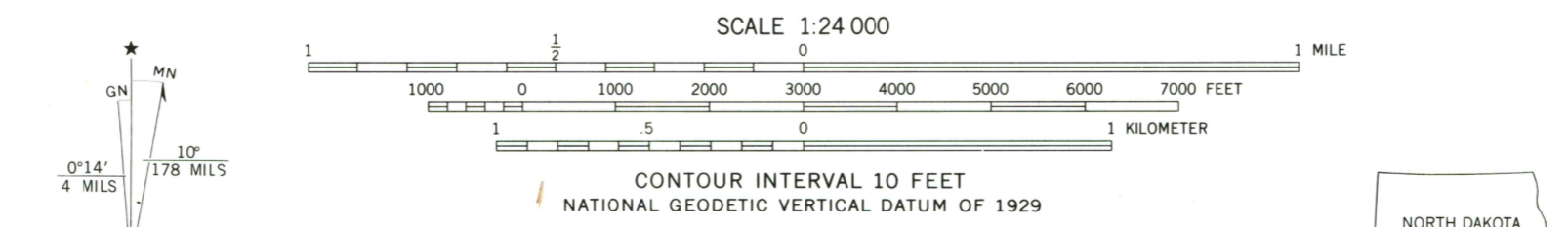
STATE OF NORTH DAKOTA
WATER COMMISSION

HAWKS NEST QUADRANGLE
NORTH DAKOTA
7.5 MINUTE SERIES (TOPOGRAPHIC)

618 W NW
(CARBONDALE WEST)



Mapped, edited, and published by the Geological Survey
in cooperation with the North Dakota Water Commission
Control by USGS and NOS/NOAA
Topography by photogrammetric methods from aerial photographs
taken 1976. Field checked 1977. Map edited 1978
Projection: North Dakota coordinate system, south zone
(Lambert conformal conic)
10,000-foot grid ticks based on North Dakota coordinate
system, south and north zones
1000-meter Universal Transverse Mercator grid, zone 14
1927 North American datum
Fine red dashed lines indicate selected fence and field lines where
generally visible on aerial photographs
This information is unchecked
There may be private inholdings within the boundaries of
the National or State reservations shown on this map



ROAD CLASSIFICATION

Primary highway, hard surface	Light-duty road, hard or improved surface
Secondary highway, hard surface	Unimproved road
Interstate Route	U.S. Route
	State Route

HAWKS NEST, N. DAK.
N4715-W9915/7.5
1978
AMS 6178 IV SE-SERIES V871

THIS MAP COMPLIES WITH NATIONAL MAP ACCURACY STANDARDS
FOR SALE BY U. S. GEOLOGICAL SURVEY, DENVER, COLORADO 80225, OR RESTON, VIRGINIA 22092
AND STATE WATER COMMISSION, BISMARCK, NORTH DAKOTA 58501
A FOLDER DESCRIBING TOPOGRAPHIC MAPS AND SYMBOLS IS AVAILABLE ON REQUEST