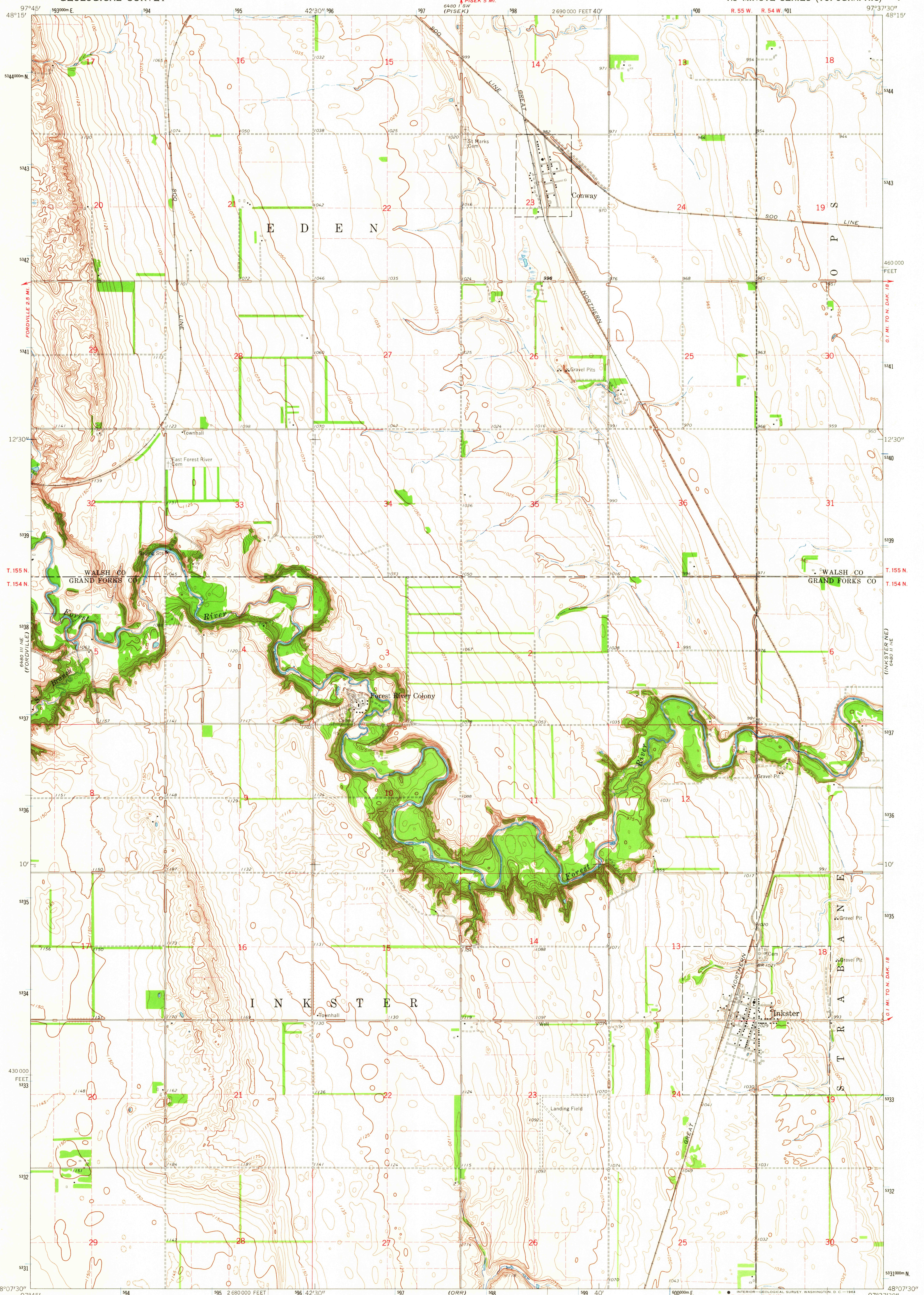


UNITED STATES  
DEPARTMENT OF THE INTERIOR  
GEOLOGICAL SURVEY

INKSTER QUADRANGLE  
NORTH DAKOTA  
7.5 MINUTE SERIES (TOPOGRAPHIC)



Maped, edited, and published by the Geological Survey as part of the Department of the Interior program for the development of the Missouri River Basin Control by USGS and USC&GS  
Topography by photogrammetric methods from aerial photographs taken 1961. Field checked 1963  
Polyconic projection. 1927 North American datum 10,000-foot grid based on North Dakota coordinate system, north zone 1000-meter Universal Transverse Mercator grid ticks, zone 14, shown in blue  
Fine red dashed lines indicate selected fence and field lines where generally visible on aerial photographs. This information is unchecked

SCALE 1:24,000  
1 2 3 4 5 6 7 8 9 10 11 12 13 14 15 16 17 18 19 20 21 22 23 24 25 26 27 28 29 30 31 32 33 34 35 36  
1000 0 1000 2000 3000 4000 5000 6000 7000 FEET  
1 2 3 4 5 6 7 8 9 10 11 12 13 14 15 16 17 18 19 20 21 22 23 24 25 26 27 28 29 30 31 32 33 34 35 36  
1 KILOMETER  
CONTOUR INTERVAL 5 FEET  
DATUM IS MEAN SEA LEVEL

UTM GRID AND 1963 MAGNETIC NORTH DECLINATION AT CENTER OF SHEET  
9° 12' 30" 12 MILS  
9° 12' 30" 12 MILS

THIS MAP COMPLIES WITH NATIONAL MAP ACCURACY STANDARDS  
FOR SALE BY U. S. GEOLOGICAL SURVEY, DENVER 25, COLORADO OR WASHINGTON 25, D. C.  
AND BY THE STATE WATER COMMISSION, BISMARCK, NORTH DAKOTA  
A FOLDER DESCRIBING TOPOGRAPHIC MAPS AND SYMBOLS IS AVAILABLE ON REQUEST

USGS  
Historical File  
Topographic Division

ROAD CLASSIFICATION  
Light-duty  
Unimproved dirt

QUADRANGLE LOCATION  
NORTH DAKOTA

INKSTER, N. DAK.  
N4807.5—W9737.5/7.5  
1963  
AMS 6480 II NW—SERIES V871

NOV 23 1964  
2000  
U.S.G.S.  
FILE COPY  
TOPOGRAPHIC DIVISION