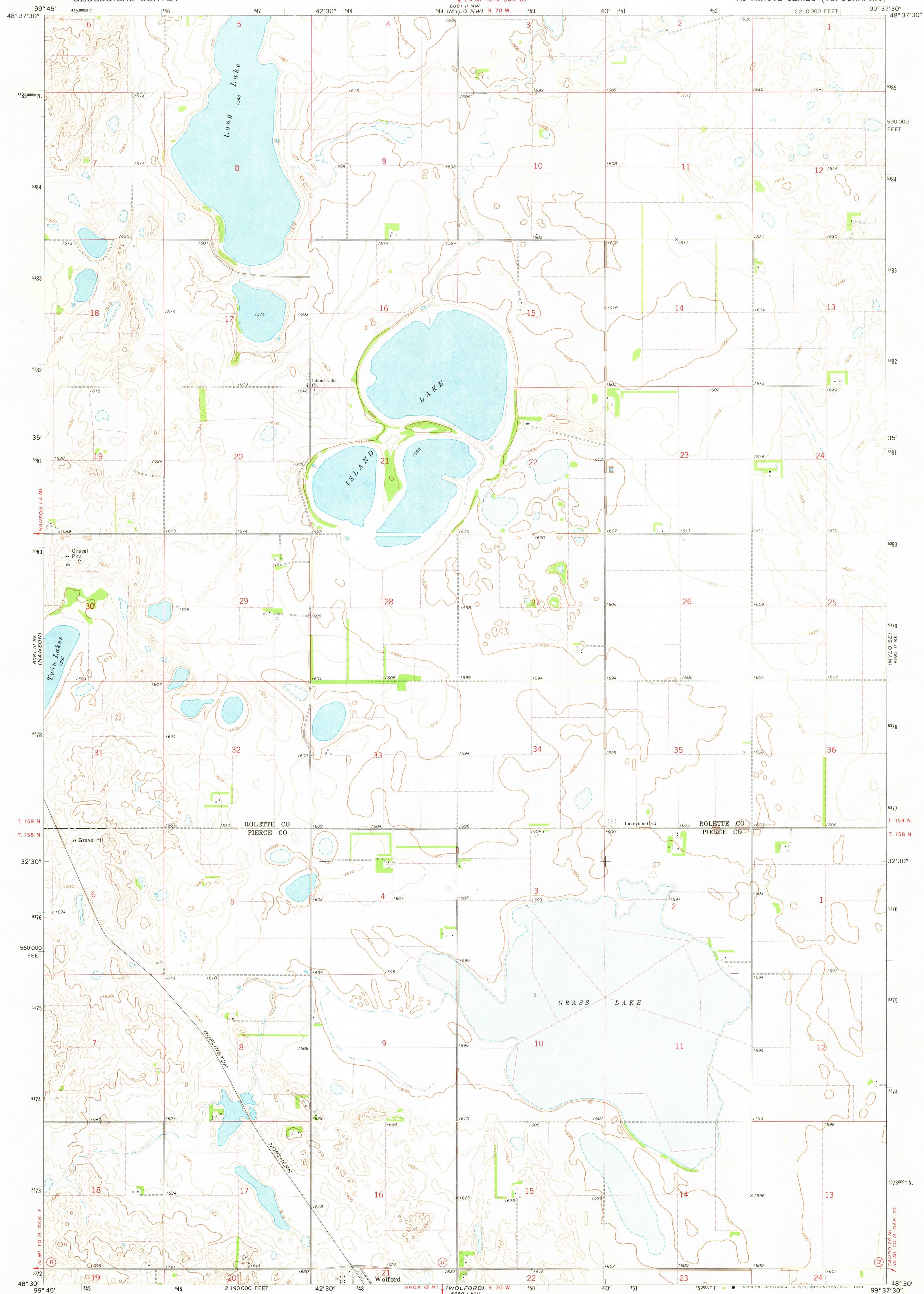


6081 III NE  
6080 IV NE  
6081 III SE  
6080 IV SE

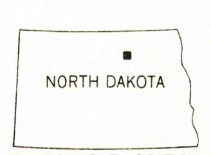
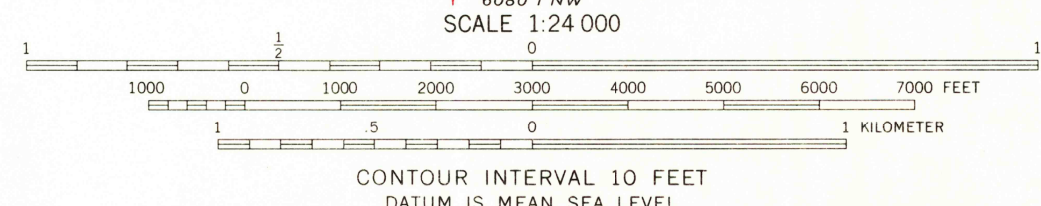
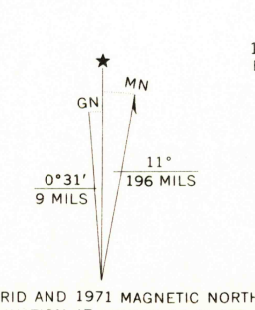
UNITED STATES  
DEPARTMENT OF THE INTERIOR  
GEOLOGICAL SURVEY

ISLAND LAKE QUADRANGLE  
NORTH DAKOTA  
7.5 MINUTE SERIES (TOPOGRAPHIC)

6081 III NE  
6080 IV NE  
6081 III SE  
6080 IV SE



Mapped, edited, and published by the Geological Survey  
Control by USGS and USC&GS  
Topography by photogrammetric methods from aerial  
photographs taken 1968. Field checked 1971  
Polyconic projection. 1927 North American datum  
10,000-foot grid based on North Dakota coordinate system,  
north zone  
1000-meter Universal Transverse Mercator grid ticks,  
zone 14, shown in blue  
Fine red dashed lines indicate selected fence and field lines  
where generally visible on aerial photographs  
This information is unchecked



ROAD CLASSIFICATION  
Primary highway, hard surface ——— Light-duty road, hard or improved surface ———  
Secondary highway, hard surface ——— Unimproved road ———  
Interstate Route — U.S. Route — State Route —

THIS MAP COMPLIES WITH NATIONAL MAP ACCURACY STANDARDS  
FOR SALE BY U. S. GEOLOGICAL SURVEY, DENVER, COLORADO 80225, OR WASHINGTON, D. C. 20542  
AND BY THE STATE WATER COMMISSION, BISMARCK, NORTH DAKOTA 58501  
A FOLDER DESCRIBING TOPOGRAPHIC MAPS AND SYMBOLS IS AVAILABLE ON REQUEST

ISLAND LAKE, N. DAK.  
N4830—W9937.5/7.5  
1971  
AMS 6081 II SW—SERIES V871