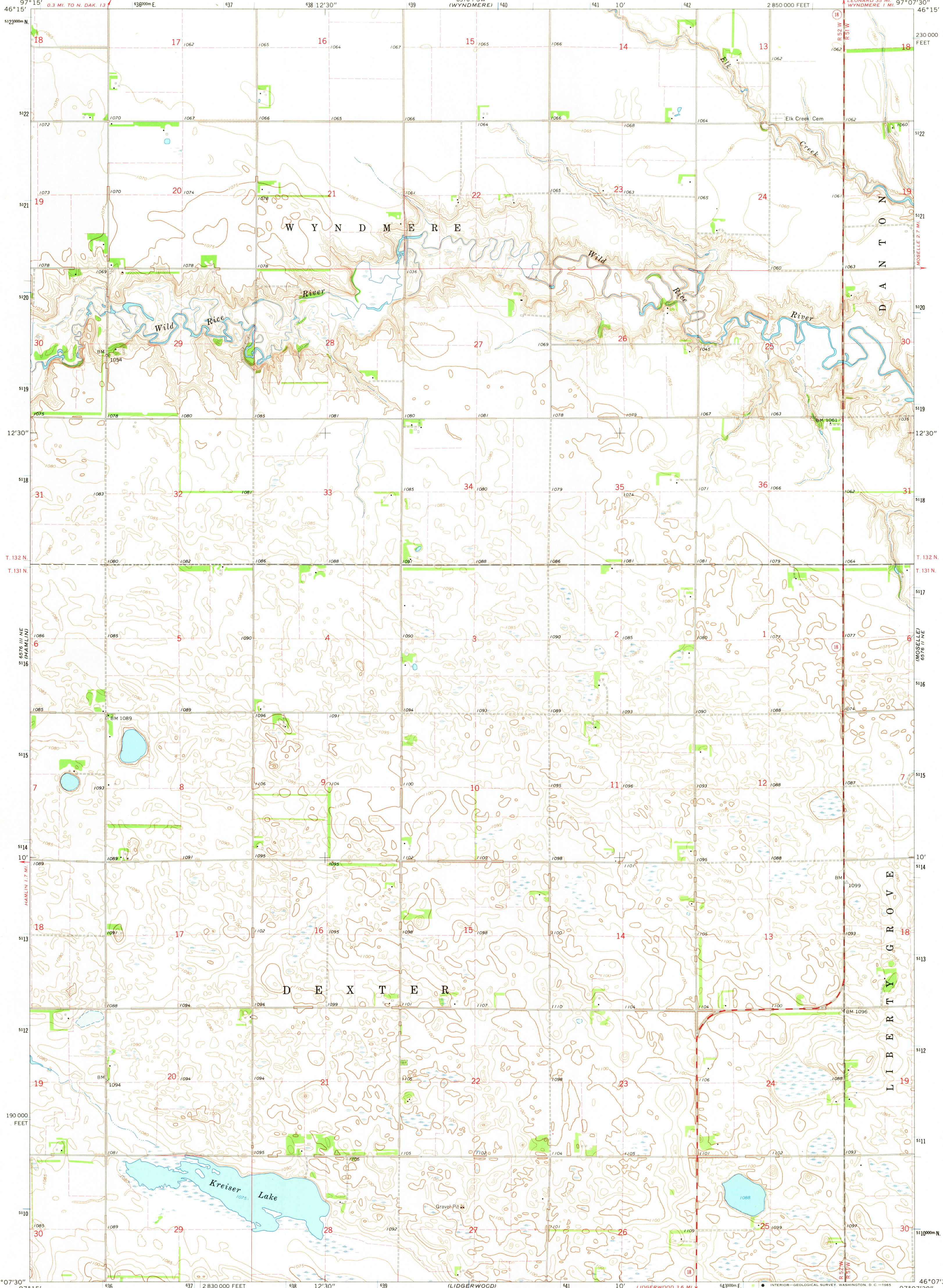


UNITED STATES
DEPARTMENT OF THE INTERIOR
GEOLOGICAL SURVEY

KREISER LAKE QUADRANGLE
NORTH DAKOTA—RICHLAND CO.
7.5 MINUTE SERIES (TOPOGRAPHIC)

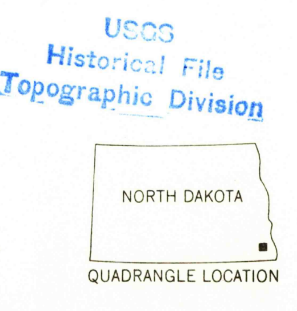
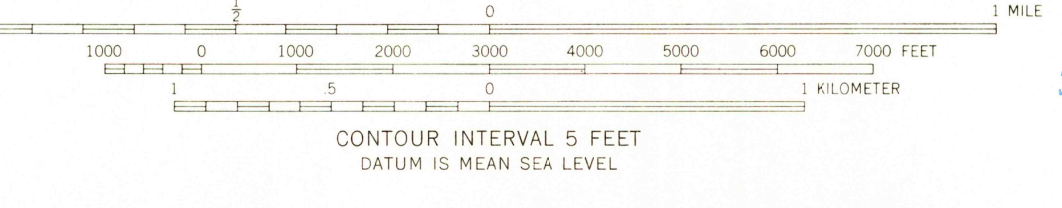
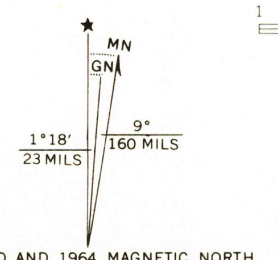


Mapped, edited, and published by the Geological Survey as part of the Department of the Interior program for the development of the Missouri River Basin. Control by USGS and USC&GS.

Topography by photogrammetric methods from aerial photographs taken 1963 and planetable surveys 1964.

Polyconic projection. 1927 North American datum. 10,000-foot grid based on North Dakota coordinate system, south zone 1000-meter Universal Transverse Mercator grid ticks, zone 14, shown in blue.

Fine red dashed lines indicate selected fence and field lines where generally visible on aerial photographs. This information is unchecked.



ROAD CLASSIFICATION

Medium-duty	Light-duty
Unimproved dirt	State Route

THIS MAP COMPLIES WITH NATIONAL MAP ACCURACY STANDARDS FOR SALE BY U.S. GEOLOGICAL SURVEY, DENVER, COLORADO 80225 OR WASHINGTON, D. C. 20242 AND BY THE STATE WATER COMMISSION, BISMARCK, NORTH DAKOTA. A FOLDER DESCRIBING TOPOGRAPHIC MAPS AND SYMBOLS IS AVAILABLE ON REQUEST.

U.S.G.S. 1964
FILE COPY
TOPOGRAPHIC DIVISION
KREISER LAKE, N. DAK.
N4607.5—W9707.5/7.5
AMS 6576 II NW—SERIES V871

DEC 2 1965