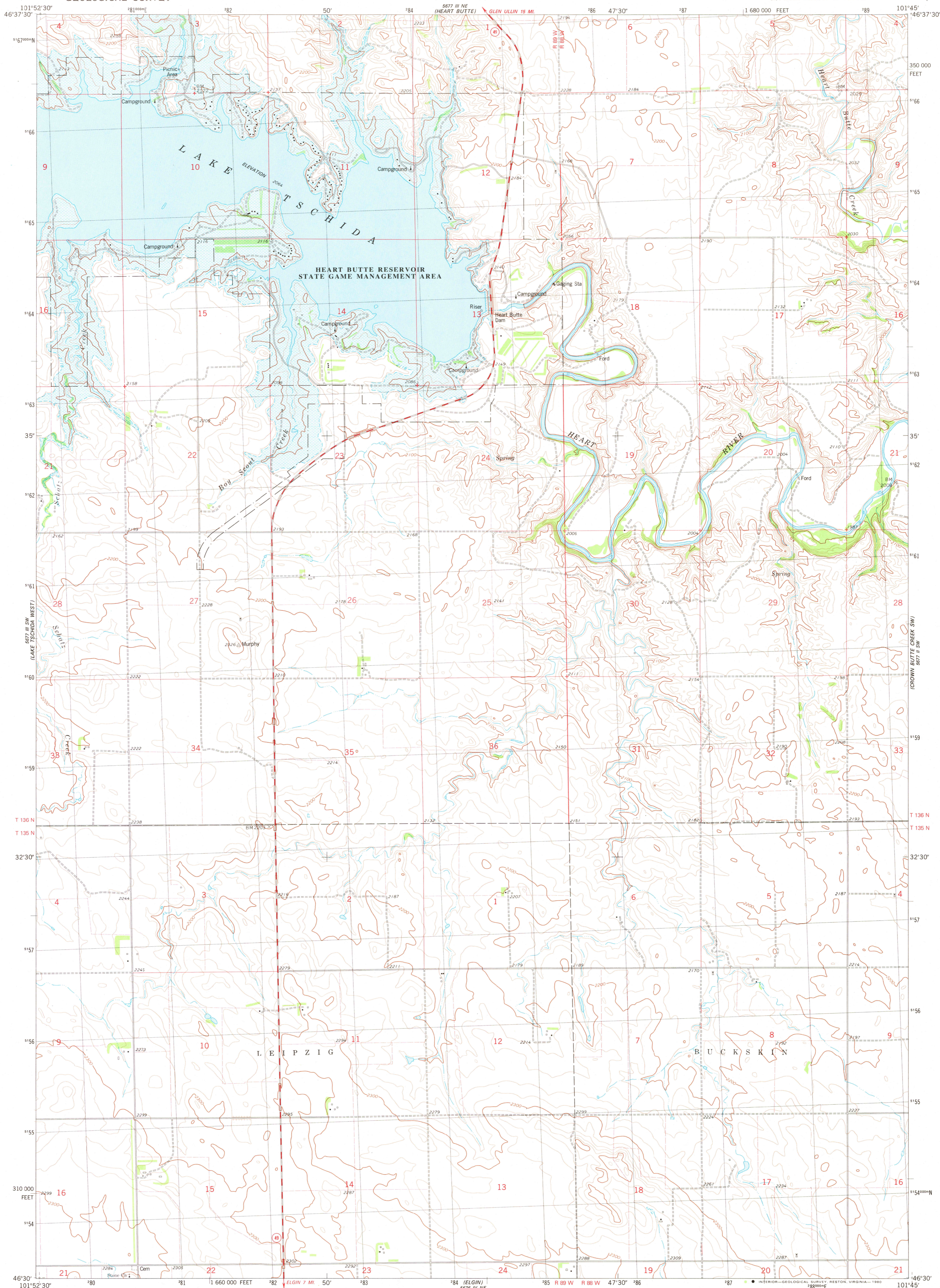
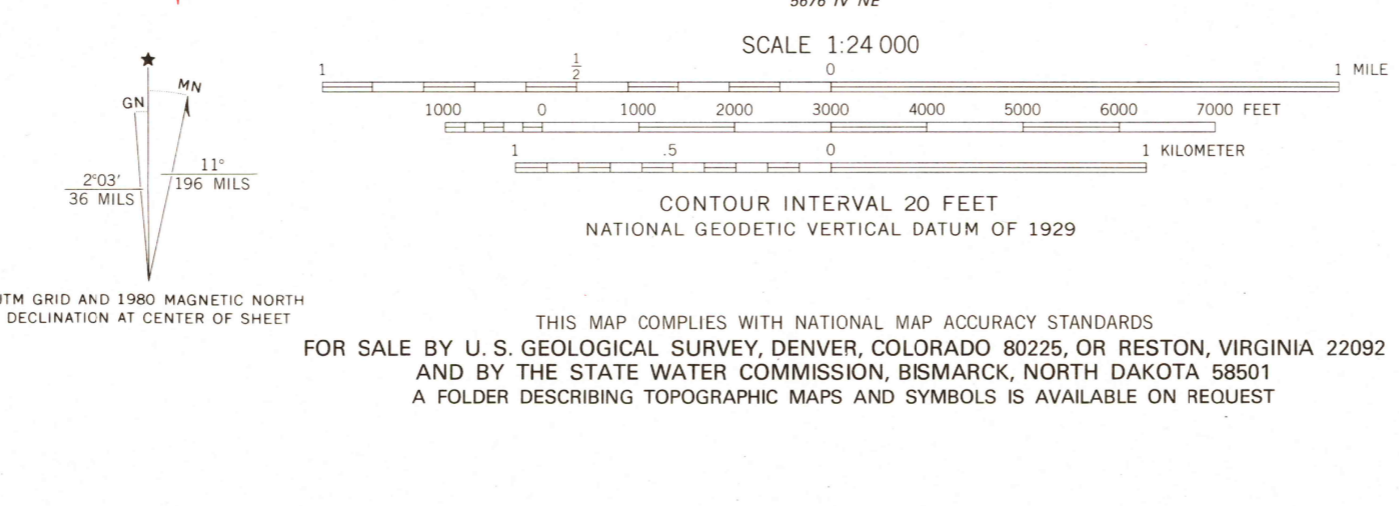


UNITED STATES  
DEPARTMENT OF THE INTERIOR  
GEOLOGICAL SURVEY

LAKE TSCHIDA EAST QUADRANGLE  
NORTH DAKOTA—GRANT CO.  
7.5 MINUTE SERIES (TOPOGRAPHIC)  
SE/4 HEART BUTTE 15' QUADRANGLE



Mapped, edited, and published by the Geological Survey  
Control by USGS and NCS/NOAA  
Topography by photogrammetric methods from aerial photographs taken 1974. Field checked 1975. Map edited 1980  
Projection and 10,000-foot grid ticks: North Dakota coordinate system, south zone (Lambert conformal conic) 1000-meter Universal Transverse Mercator grid, zone 14 1927 North American datum  
To place on the predicted North American Datum 1983 move the projection lines 5 meters north and 36 meters east as shown by dashed corner ticks  
Fine red dashed lines indicate selected fence lines  
Areas covered by dashed light-blue pattern are subject to controlled inundation  
There may be private inholdings within the boundaries of the National or State reservations shown on this map



ROAD CLASSIFICATION  
Primary highway, hard surface  
Secondary highway, hard surface  
Unimproved road  
Interstate Route  
U. S. Route  
State Route  
Light-duty road, hard or improved surface  
Unimproved road

NORTH DAKOTA  
QUADRANGLE LOCATION

LAKE TSCHIDA EAST, N. DAK.  
SE/4 HEART BUTTE 15' QUADRANGLE  
N4630-W10145/7.5

USGS  
Historical File  
Topographic Division

1980  
DMA 5677 III SE—SERIES V871

DEC 29 1980

2050