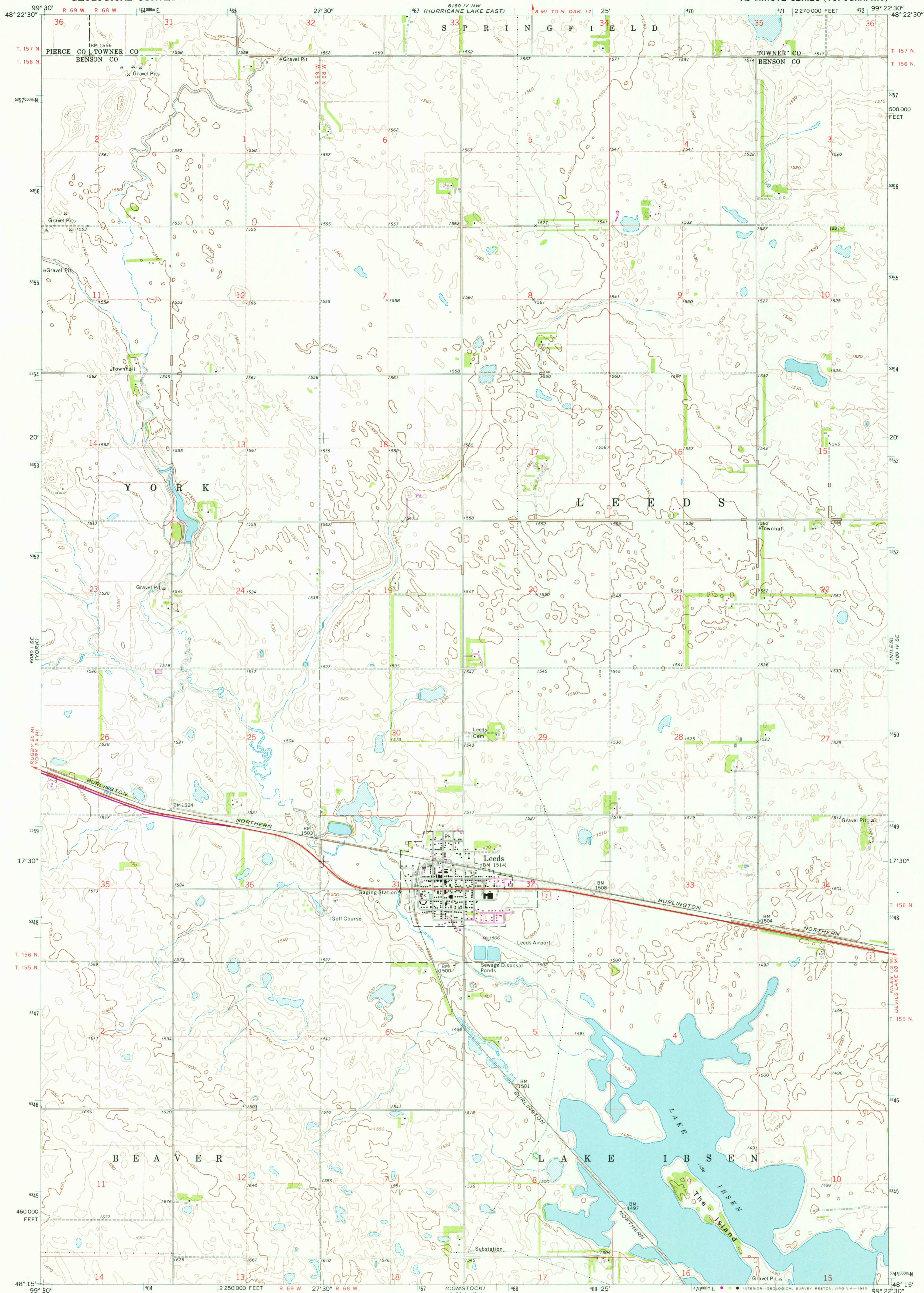


UNITED STATES  
DEPARTMENT OF THE INTERIOR  
GEOLOGICAL SURVEY

LEEDS QUADRANGLE  
NORTH DAKOTA  
7.5 MINUTE SERIES (TOPOGRAPHIC)



Mapped, edited, and published by the Geological Survey

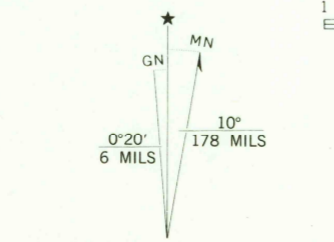
Control by USGS and USC&GS

Topography by photogrammetric methods from aerial  
photographs taken 1968. Field checked 1971

Polyconic projection. 1927 North American datum  
10,000-foot grid based on North Dakota coordinate system,  
north zone  
1000-meter Universal Transverse Mercator grid ticks,  
zone 14, shown in blue

Fine red dashed lines indicate selected fence and field lines  
where generally visible on aerial photographs  
This information is unchecked

To place on the predicted North American Datum 1983  
move the projection lines 3 meters north and  
29 meters east as shown by dashed corner ticks

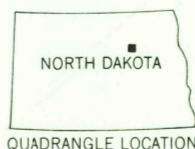


UTM GRID AND 1980 MAGNETIC NORTH  
DECLINATION AT CENTER OF SHEET

THIS MAP COMPLIES WITH NATIONAL MAP ACCURACY STANDARDS  
FOR SALE BY U. S. GEOLOGICAL SURVEY, DENVER, COLORADO 80225, OR RESTON, VIRGINIA 22092  
AND STATE WATER COMMISSION, BISMARCK, NORTH DAKOTA 58501  
A FOLDER DESCRIBING TOPOGRAPHIC MAPS AND SYMBOLS IS AVAILABLE ON REQUEST

SCALE 1:24,000

CONTOUR INTERVAL 10 FEET  
NATIONAL GEODETIC VERTICAL DATUM OF 1929



ROAD CLASSIFICATION

Primary highway,  
hard surface ——— Light-duty road, hard or  
improved surface

Secondary highway,  
hard surface ——— Unimproved road

Interstate Route ——— U. S. Route ——— State Route

USGS  
Historical File  
Topographic Division

LEEDS, N. DAK.  
N4815-W9922.5/7.5

1971  
PHOTOREVISED 1980  
DMA 6180 IV SW SERIES 5781

AUG 14 1980