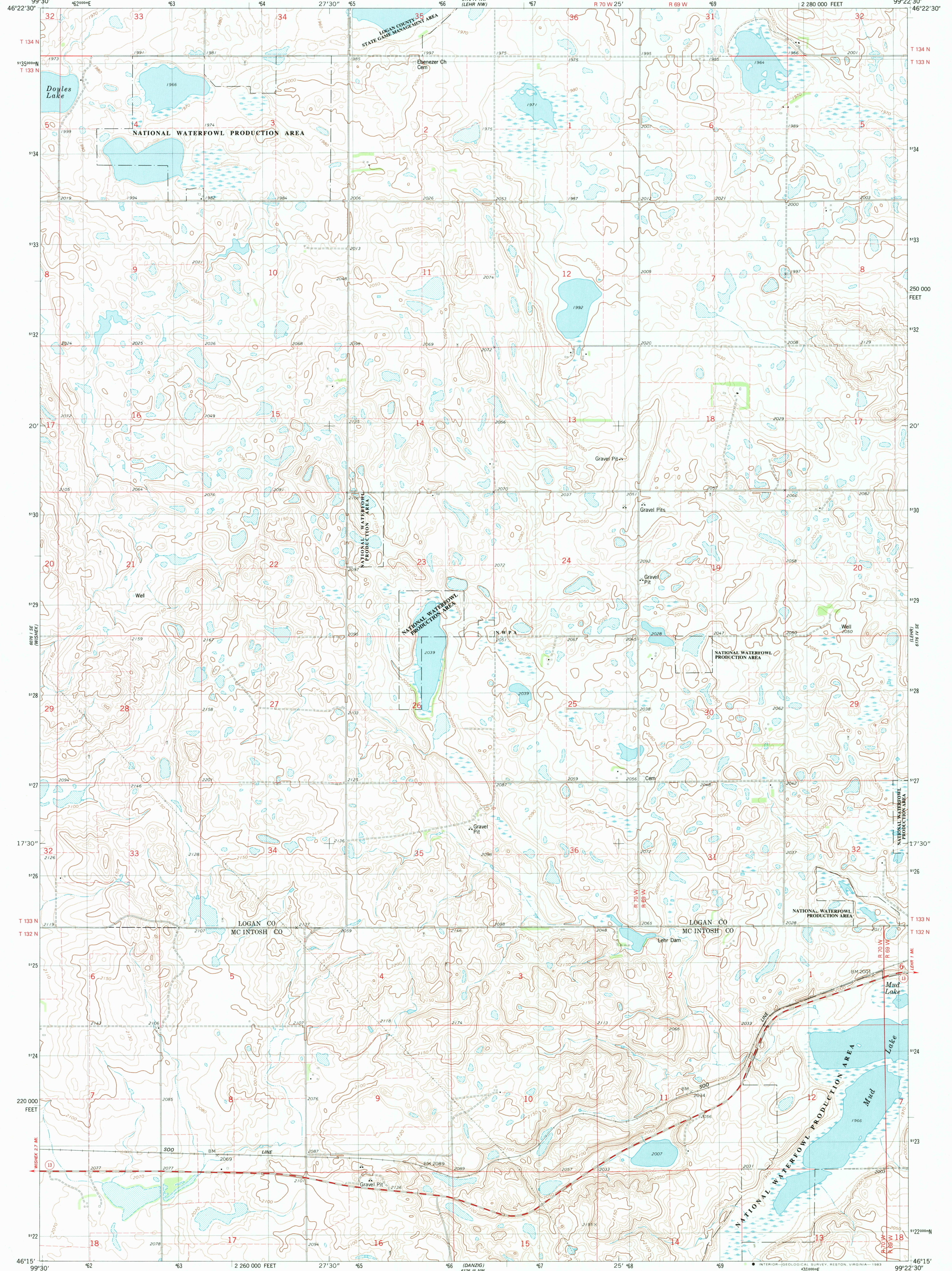


MAY 1982  
6878 IV NW  
(LEHR SW)

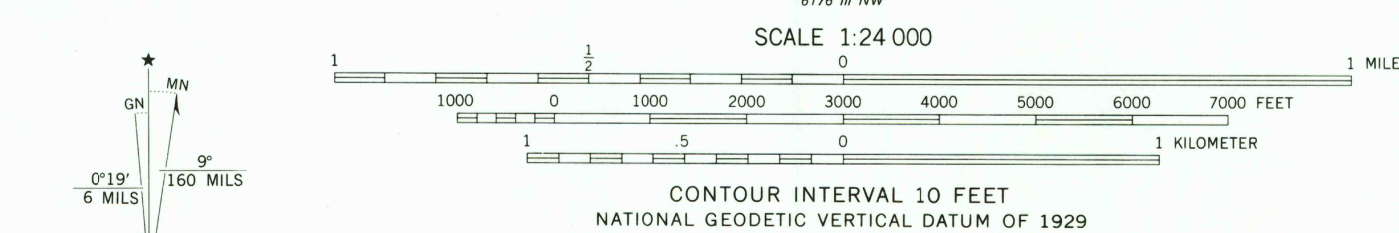
UNITED STATES  
DEPARTMENT OF THE INTERIOR  
GEOLOGICAL SURVEY

LEHR SW QUADRANGLE  
NORTH DAKOTA  
7.5 MINUTE SERIES (TOPOGRAPHIC)

6878 IV NW  
(LEHR SW)



Mapped, edited, and published by the Geological Survey  
Control by USGS and NOS/NOAA  
Topography by photogrammetric methods from aerial photographs taken 1976. Field checked 1978. Map edited 1982  
Projection and 10,000-foot grid ticks: North Dakota coordinate system, south zone (Lambert conformal conic)  
1000-meter Universal Transverse Mercator grid, zone 14 1927 North American Datum  
To place on the predicted North American Datum 1983 move the projection lines 6 meters north and 32 meters east as shown by dashed corner ticks  
There may be private inholdings within the boundaries of the National or State reservations shown on this map  
Fine red dashed lines indicate selected fence and field lines where generally visible on aerial photographs  
This information is unchecked



ROAD CLASSIFICATION

Primary highway, hard surface	Light-duty road, hard or improved surface
Secondary highway, hard surface	Unimproved road
Interstate Route	U. S. Route
	State Route

NORTH DAKOTA  
QUADRANGLE LOCATION

THIS MAP COMPLIES WITH NATIONAL MAP ACCURACY STANDARDS  
FOR SALE BY U. S. GEOLOGICAL SURVEY, DENVER, COLORADO 80226, OR RESTON, VIRGINIA 22092  
AND BY THE STATE WATER COMMISSION, BISMARCK, NORTH DAKOTA 58501  
A FOLDER DESCRIBING TOPOGRAPHIC MAPS AND SYMBOLS IS AVAILABLE ON REQUEST

LEHR SW, N. DAK.  
N4615-W9922.5/7.5  
1982  
DMA 6176 IV SW-SERIES V871

SEP 1 1986

1981 AND HISTORICAL MAP ARCHIVES