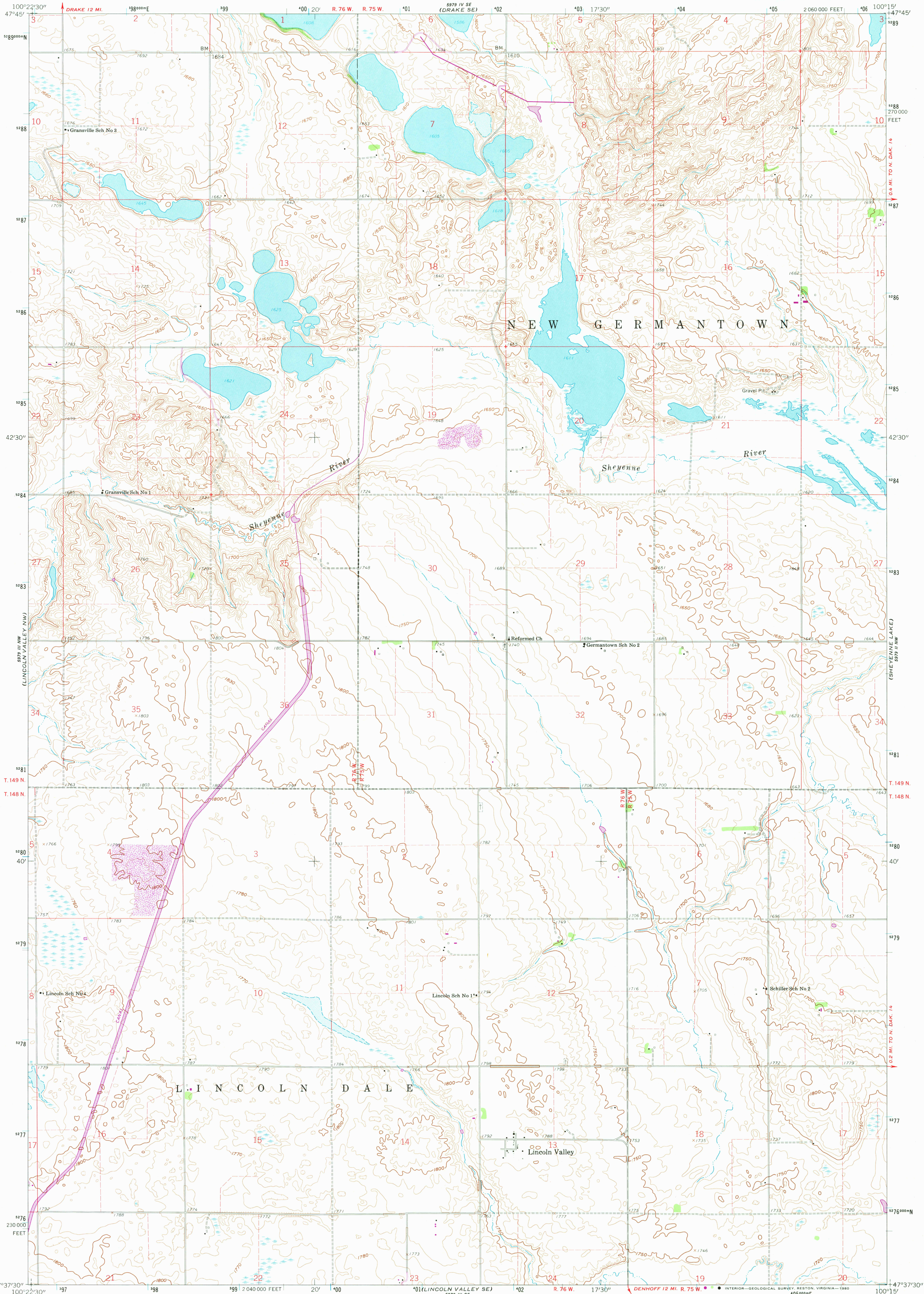
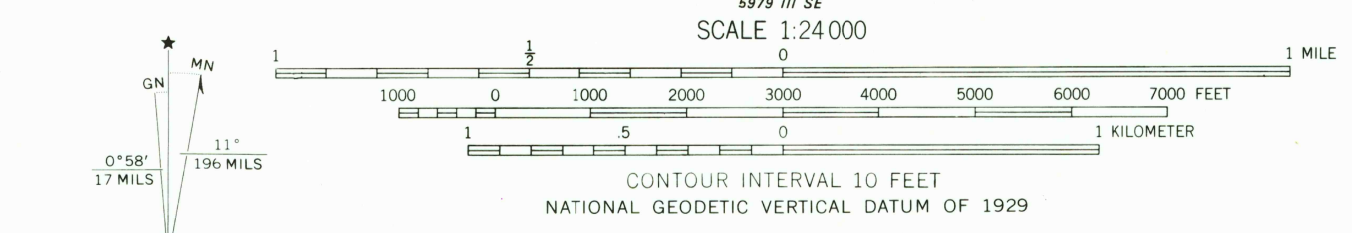


UNITED STATES  
DEPARTMENT OF THE INTERIOR  
GEOLOGICAL SURVEY

LINCOLN VALLEY QUADRANGLE  
NORTH DAKOTA—SHERIDAN CO.  
7.5 MINUTE SERIES (TOPOGRAPHIC)  
NE/4 LINCOLN VALLEY 15' QUADRANGLE



Mapped, edited, and published by the Geological Survey as part of the Department of the Interior program for the development of the Missouri River Basin Control by USGS and USC&GS  
Topography from aerial photographs by photogrammetric methods  
Aerial photographs taken 1958. Field check 1950  
Polyconic projection  
10,000-foot grid based on North Dakota coordinate system, north zone  
100-meter Universal Transverse Mercator grid ticks, zone 14, shown in blue, 1927 North American Datum  
To place on the predicted North American Datum 1983 move the projection lines 4 meters north and 32 meters east as shown by dashed corner ticks  
Fine red dashed lines indicate selected fence and field lines where generally visible on aerial photographs. This information is unchecked



ROAD CLASSIFICATION

Primary highway, all weather, hard surface	Light-duty road, all weather, improved surface
Secondary highway, all weather, hard surface	Unimproved road, fair or dry weather

   Interstate Route   
    U. S. Route   
    State Route



LINCOLN VALLEY, N. DAK.  
NE/4 LINCOLN VALLEY 15' QUADRANGLE  
N 4737.5—W 10015/7.5

THIS MAP COMPLIES WITH NATIONAL MAP ACCURACY STANDARDS  
FOR SALE BY U.S. GEOLOGICAL SURVEY, DENVER COLORADO 80225, OR RESTON, VIRGINIA 22092  
AND BY THE STATE WATER COMMISSION, BISMARCK, NORTH DAKOTA 58501  
A FOLDER DESCRIBING TOPOGRAPHIC MAPS AND SYMBOLS IS AVAILABLE ON REQUEST

Revisions shown in purple and woodland compiled from aerial photographs taken 1977 and other source data  
This information not field checked. Map edited 1980  
1960  
PHOTOREVISED 1980  
DMA 5979 III NE-SERIES V871

06T 2 9 1980  
1250  
USGS  
Historical File  
Topographic Division