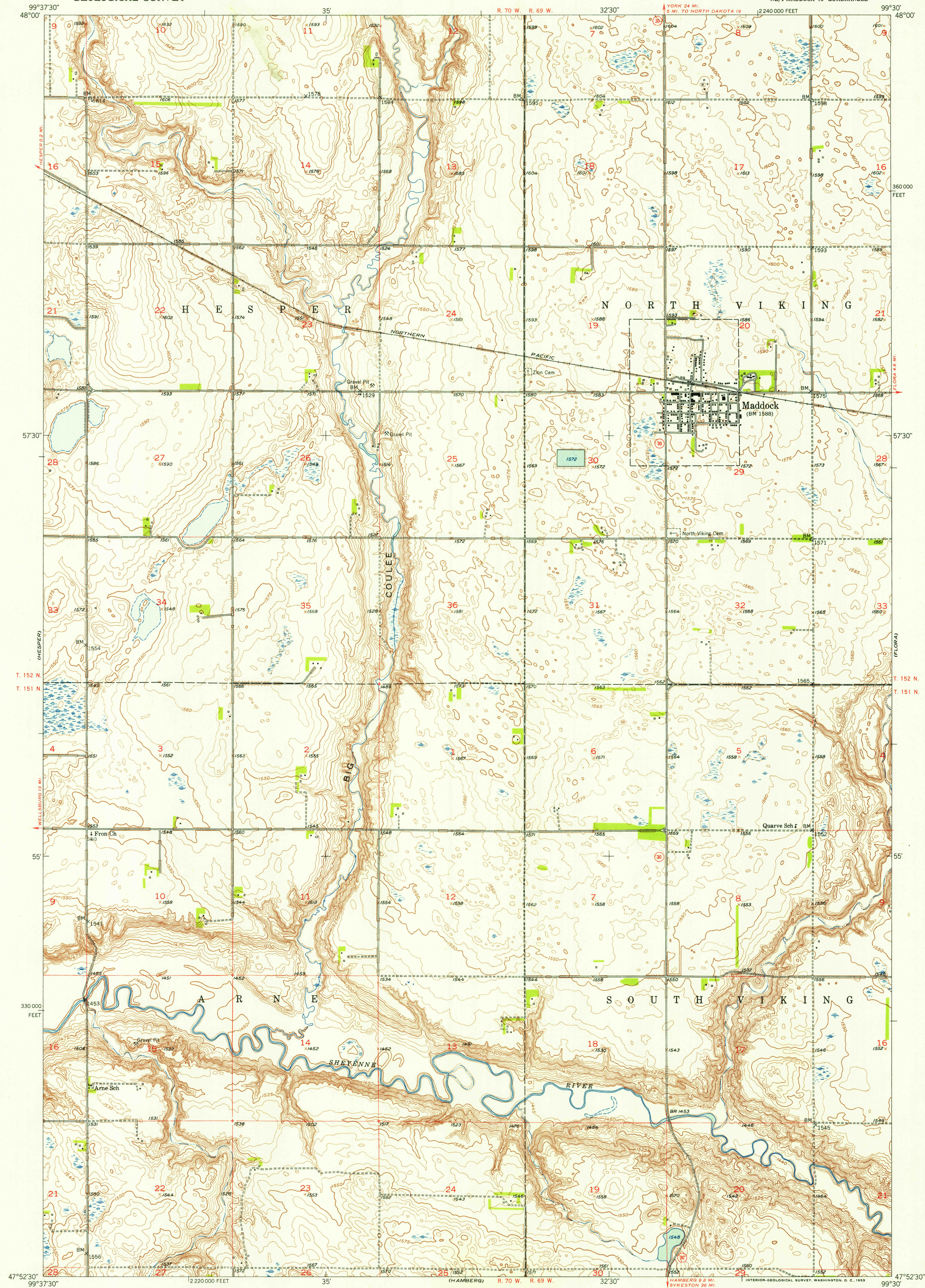
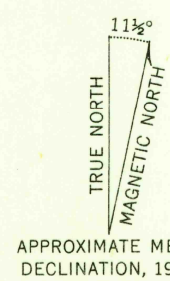


UNITED STATES  
DEPARTMENT OF THE INTERIOR  
GEOLOGICAL SURVEY

MADDOCK QUADRANGLE  
NORTH DAKOTA-BENSON CO.  
7.5 MINUTE SERIES (TOPOGRAPHIC)  
NE/4 MADDOCK 15' QUADRANGLE



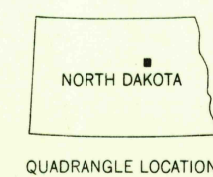
Mapped, edited, and published by the Geological Survey  
as part of the Department of the Interior program  
for the development of the Missouri River Basin  
Control by USGS and USC&GS  
Culture and drainage in part compiled from aerial photographs  
taken 1941. Topography by plane-table surveys 1951  
Polyconic projection. 1927 North American datum  
10,000-foot grid based on North Dakota coordinate system,  
north zone



SCALE 1:24000  
1 0 1000 2000 3000 4000 5000 6000 7000 FEET  
1 5 0 1 KILOMETER  
CONTOUR INTERVAL 5 FEET  
DATUM IS MEAN SEA LEVEL  
THIS MAP COMPLIES WITH NATIONAL MAP ACCURACY STANDARDS  
FOR SALE BY U. S. GEOLOGICAL SURVEY, FEDERAL CENTER, DENVER, COLORADO OR WASHINGTON 25, D. C.  
AND BY THE STATE WATER CONSERVATION COMMISSION, BISMARCK, NORTH DAKOTA  
A FOLDER DESCRIBING TOPOGRAPHIC MAPS AND SYMBOLS IS AVAILABLE ON REQUEST

USGS  
Historical File  
Topographic Division

ROAD CLASSIFICATION  
Heavy-duty 4 LANE 16 LANE Light-duty  
Medium-duty 4 LANE 16 LANE Unimproved dirt  
U. S. Route State Route



MADDOCK, N. DAK.  
NE/4 MADDOCK 15' QUADRANGLE  
N4752.5-W9930/7.5  
1951