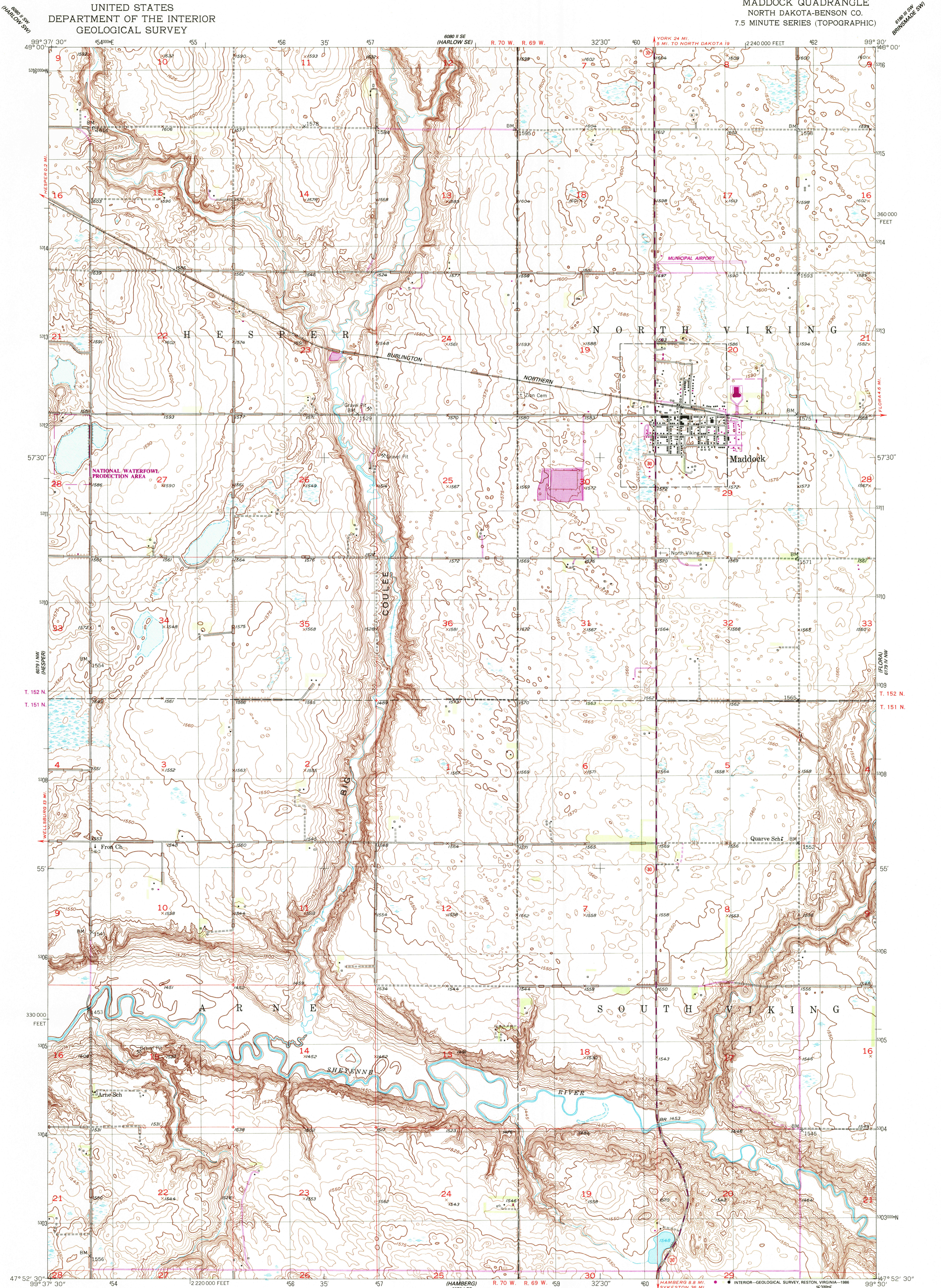
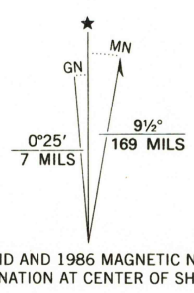


UNITED STATES  
DEPARTMENT OF THE INTERIOR  
GEOLOGICAL SURVEY

MADDOCK QUADRANGLE  
NORTH DAKOTA-BENSON CO.  
7.5 MINUTE SERIES (TOPOGRAPHIC)



Maped, edited, and published by the Geological Survey as part of the Department of the Interior program for the development of the Missouri River Basin Control by USGS and USC&GS Culture and drainage in part compiled from aerial photographs taken 1941. Topography by plane-table surveys 1951 Polyconic projection. 1927 North American datum 10,000-foot grid based on North Dakota coordinate system, north zone 1000-meter Universal Transverse Mercator grid, zone 14 To place on the predicted North American Datum 1983, move the projection lines 4 meters north and 30 meters east as shown by dashed corner ticks There may be private inholdings within the boundaries of the National or State reservations shown on this map



SCALE 1:24 000  
1 0000 0 1000 2000 3000 4000 5000 6000 7000 FEET  
1 5 10 15 20 25 30 35 40 45 50 55 60 65 70 75 80 85 90 95 100 METERS  
CONTOUR INTERVAL 5 FEET  
NATIONAL GEODETIC VERTICAL DATUM OF 1929

THIS MAP COMPLIES WITH NATIONAL MAP ACCURACY STANDARDS  
FOR SALE BY U.S. GEOLOGICAL SURVEY, DENVER, COLORADO 80225, OR RESTON, VIRGINIA 22092  
AND NORTH DAKOTA WATER COMMISSION, BISMARCK, NORTH DAKOTA 58501  
A FOLDER DESCRIBING TOPOGRAPHIC MAPS AND SYMBOLS IS AVAILABLE ON REQUEST

ROAD CLASSIFICATION  
Heavy-duty 4 LANE 16 LANE Light-duty  
Medium-duty 2 LANE 16 LANE Unimproved dirt  
U. S. Route State Route



MADDOCK, N. DAK.

47099-H5-TF-024

1951

PHOTOREVISED 1986  
DMA 6079 1 NE-SERIES V871

USGS NMD HISTORICAL MAP

AUG 18 1986

REC'D FILE COPY