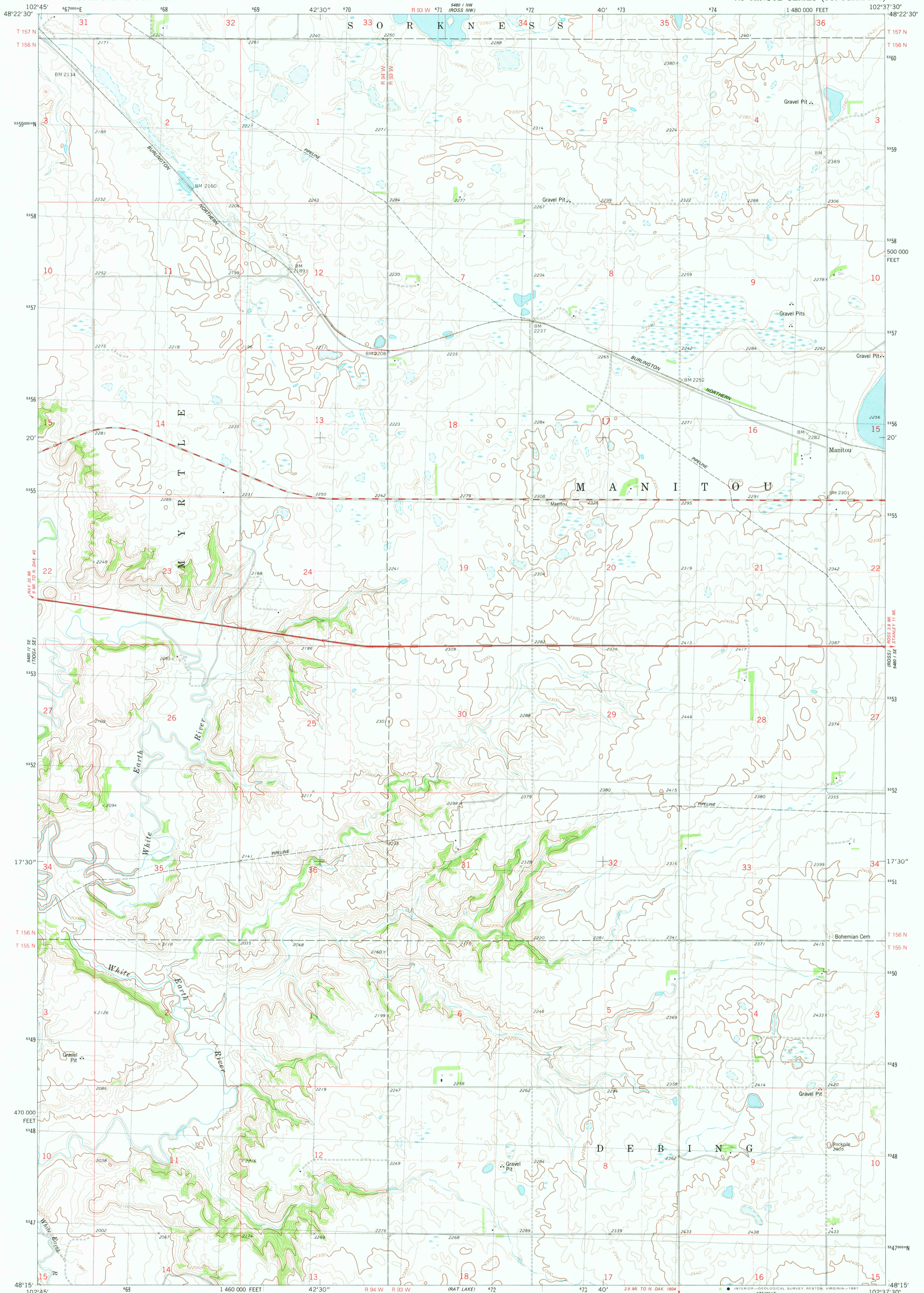
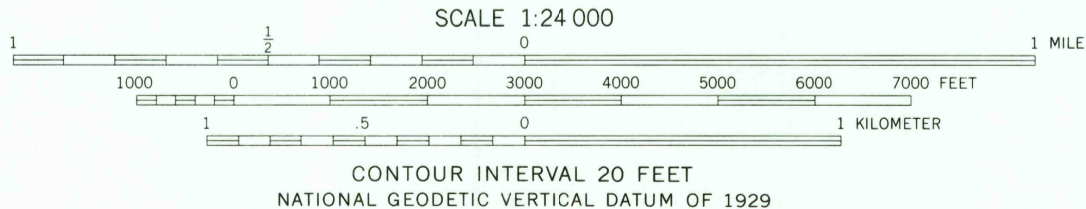
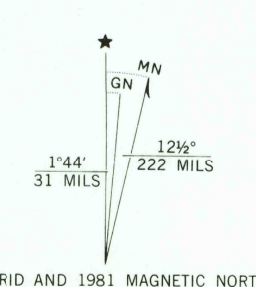


UNITED STATES  
DEPARTMENT OF THE INTERIOR  
GEOLOGICAL SURVEY

MANITOU QUADRANGLE  
NORTH DAKOTA—MOUNTRAIL CO.  
7.5 MINUTE SERIES (TOPOGRAPHIC)



Mapped, edited, and published by the Geological Survey  
Control by USGS and NOS/NOAA  
Topography by photogrammetric methods from aerial photographs taken 1973. Field checked 1975. Map edited 1981  
Projection and 10,000-foot grid ticks: North Dakota coordinate system, north zone (Lambert conformal conic)  
1000-meter Universal Transverse Mercator grid, zone 13 1927 North American Datum  
To place on the predicted North American Datum 1983 move the projection lines 3 meters north and 36 meters east as shown by dashed corner ticks  
Fine red dashed lines indicate selected fence and field lines where generally visible on aerial photographs  
This information is unchecked



ROAD CLASSIFICATION

Primary highway, hard surface	Light-duty road, hard or improved surface
Secondary highway, hard surface	Unimproved road
Interstate Route	U. S. Route
	State Route

QUADRANGLE LOCATION

USGS HISTORICAL FILM NATIONAL MAPPING DIVISION

MANITOU, N. DAK.  
N4815-W10237.5/7.5

1981

DMA 5480 1 SW-SERIES V871

THIS MAP COMPLIES WITH NATIONAL MAP ACCURACY STANDARDS  
FOR SALE BY U. S. GEOLOGICAL SURVEY, DENVER, COLORADO 80225, OR RESTON, VIRGINIA 22092  
AND BY THE STATE WATER COMMISSION, BISMARCK, NORTH DAKOTA 58501  
A FOLDER DESCRIBING TOPOGRAPHIC MAPS AND SYMBOLS IS AVAILABLE ON REQUEST

AUG 13 1981  
2050