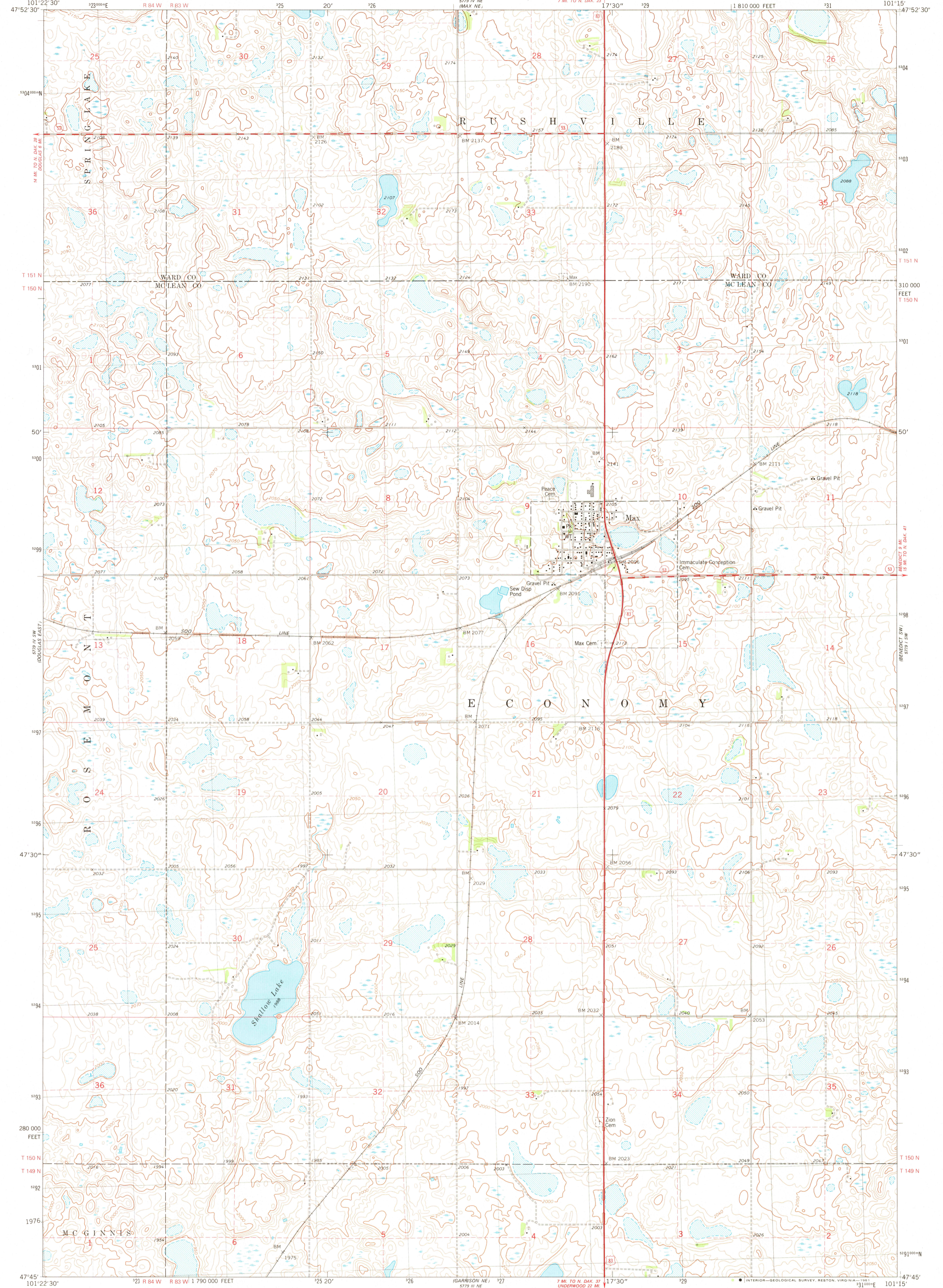


5779 IV NE  
BENEDICT NW

UNITED STATES  
DEPARTMENT OF THE INTERIOR  
GEOLOGICAL SURVEY

MAX QUADRANGLE  
NORTH DAKOTA  
7.5 MINUTE SERIES (TOPOGRAPHIC)

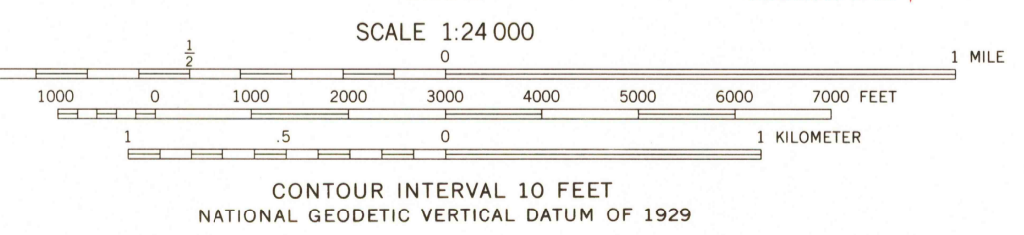
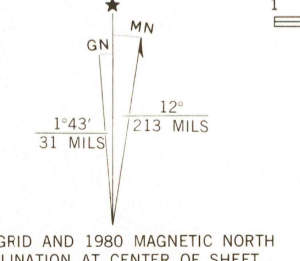
5779 IV NE  
BENEDICT NW



5779 IV NE  
BENEDICT NW

Mapped, edited, and published by the Geological Survey

Control by USGS and NOS/NOAA  
Topography by photogrammetric methods from aerial photographs taken 1973. Field checked 1975. Map edited 1980  
Projection and 10,000-foot grid ticks: North Dakota coordinate system, north zone (Lambert conformal conic)  
1000-meter Universal Transverse Mercator grid, zone 14 1927 North American Datum  
To place on the predicted North American Datum 1983 move the projection lines 4 meters north and 34 meters east as shown by dashed corner ticks  
Fine red dashed lines indicate selected fence and field lines where generally visible on aerial photographs  
This information is unchecked



ROAD CLASSIFICATION

Primary highway, hard surface	Light-duty road, hard or improved surface
Secondary highway, hard surface	Unimproved road
Interstate Route	U. S. Route
	State Route

THIS MAP COMPLIES WITH NATIONAL MAP ACCURACY STANDARDS  
FOR SALE BY U. S. GEOLOGICAL SURVEY, DENVER, COLORADO 80225, OR RESTON, VIRGINIA 22092  
AND STATE WATER COMMISSION, BISMARCK, NORTH DAKOTA 58501  
A FOLDER DESCRIBING TOPOGRAPHIC MAPS AND SYMBOLS IS AVAILABLE ON REQUEST

MAX, N. DAK.  
N4745-W10115/7.5  
1980  
DMA 5779 IV SE - SERIES V871

USGS  
Historical File  
National Mapping D...

MAR 25 1981  
1950