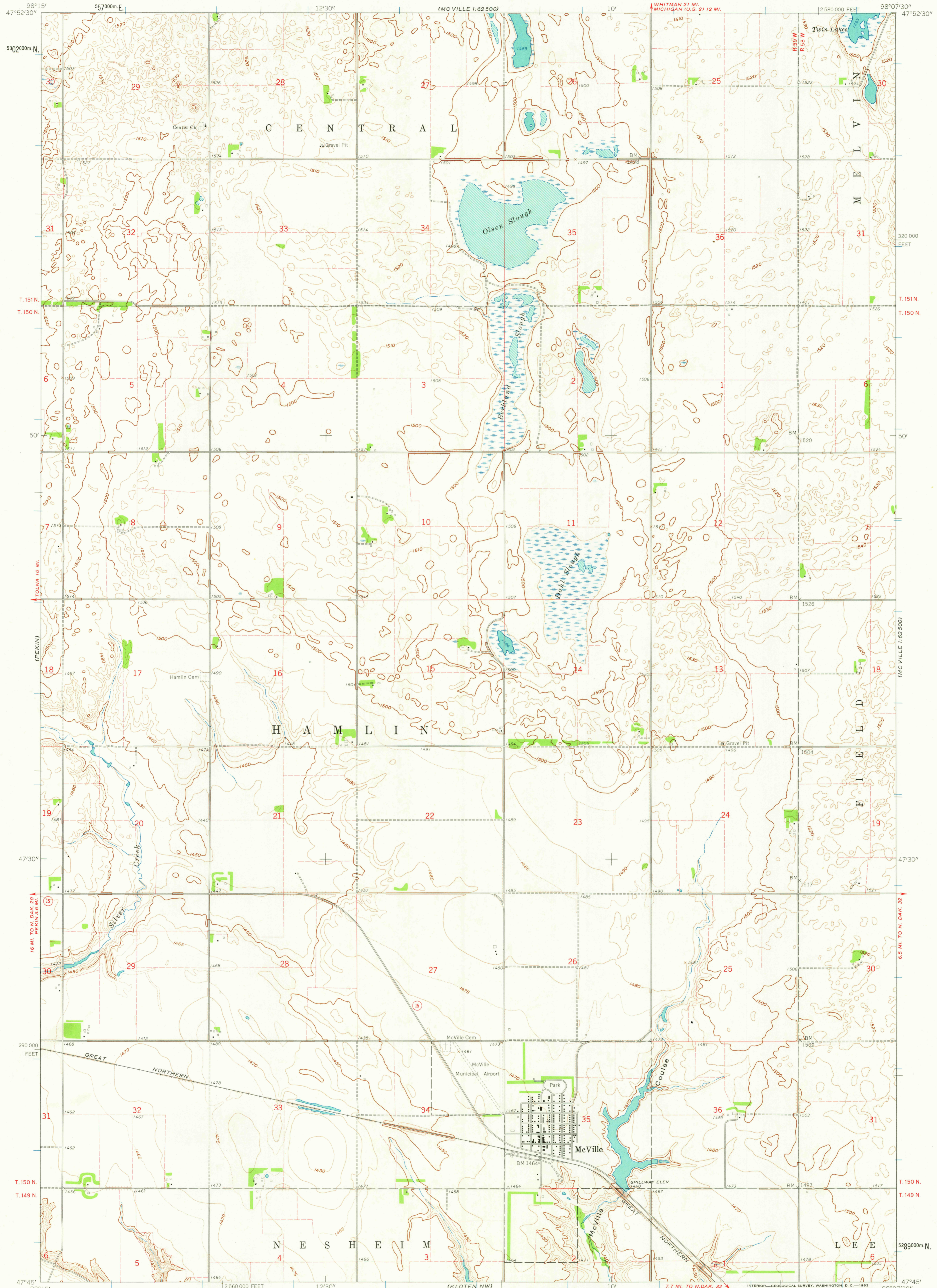


(PEKIN NE)

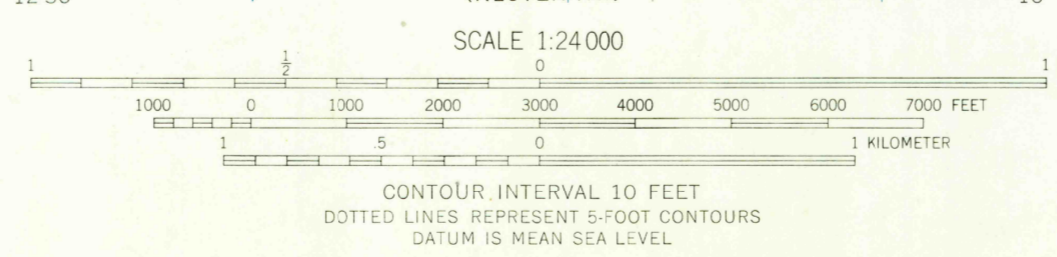
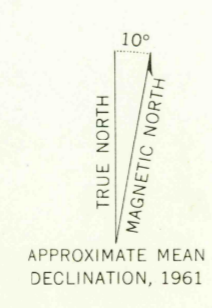
UNITED STATES  
DEPARTMENT OF THE INTERIOR  
GEOLOGICAL SURVEY

MC VILLE QUADRANGLE  
NORTH DAKOTA-NELSON CO.  
7.5 MINUTE SERIES (TOPOGRAPHIC)  
SW 1/4 MCVILLE 15' QUADRANGLE

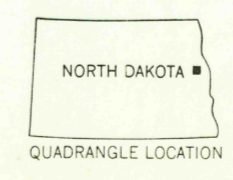
(MCVILLE 1:62 500)



Mapped, edited, and published by the Geological Survey as part of the Department of the Interior program for the development of the Missouri River Basin. Control by USGS and USC&GS. Topography by photogrammetric methods from aerial photographs taken 1959. Field checked 1961. Polyconic projection. 1927 North American datum 10,000-foot grid based on North Dakota coordinate system, north zone 1000-meter Universal Transverse Mercator grid ticks, zone 14, shown in blue. Fine red dashed lines indicate selected fence and field lines where generally visible on aerial photographs. This information is unchecked.



USGS Historical File Topographic Division. ROAD CLASSIFICATION: Light-duty, Unimproved dirt. State Route symbol.



THIS MAP COMPLIES WITH NATIONAL MAP ACCURACY STANDARDS FOR SALE BY U.S. GEOLOGICAL SURVEY, DENVER 25, COLORADO OR WASHINGTON 25, D. C. AND BY THE STATE WATER CONSERVATION COMMISSION, BISMARCK, NORTH DAKOTA. A FOLDER DESCRIBING TOPOGRAPHIC MAPS AND SYMBOLS IS AVAILABLE ON REQUEST.

MC VILLE, N. DAK. SW 1/4 MCVILLE 15' QUADRANGLE N 4745-W 9807.5/7.5

1961

FILE COPY TOPOGRAPHIC DIVISION

AUG - 9 1963