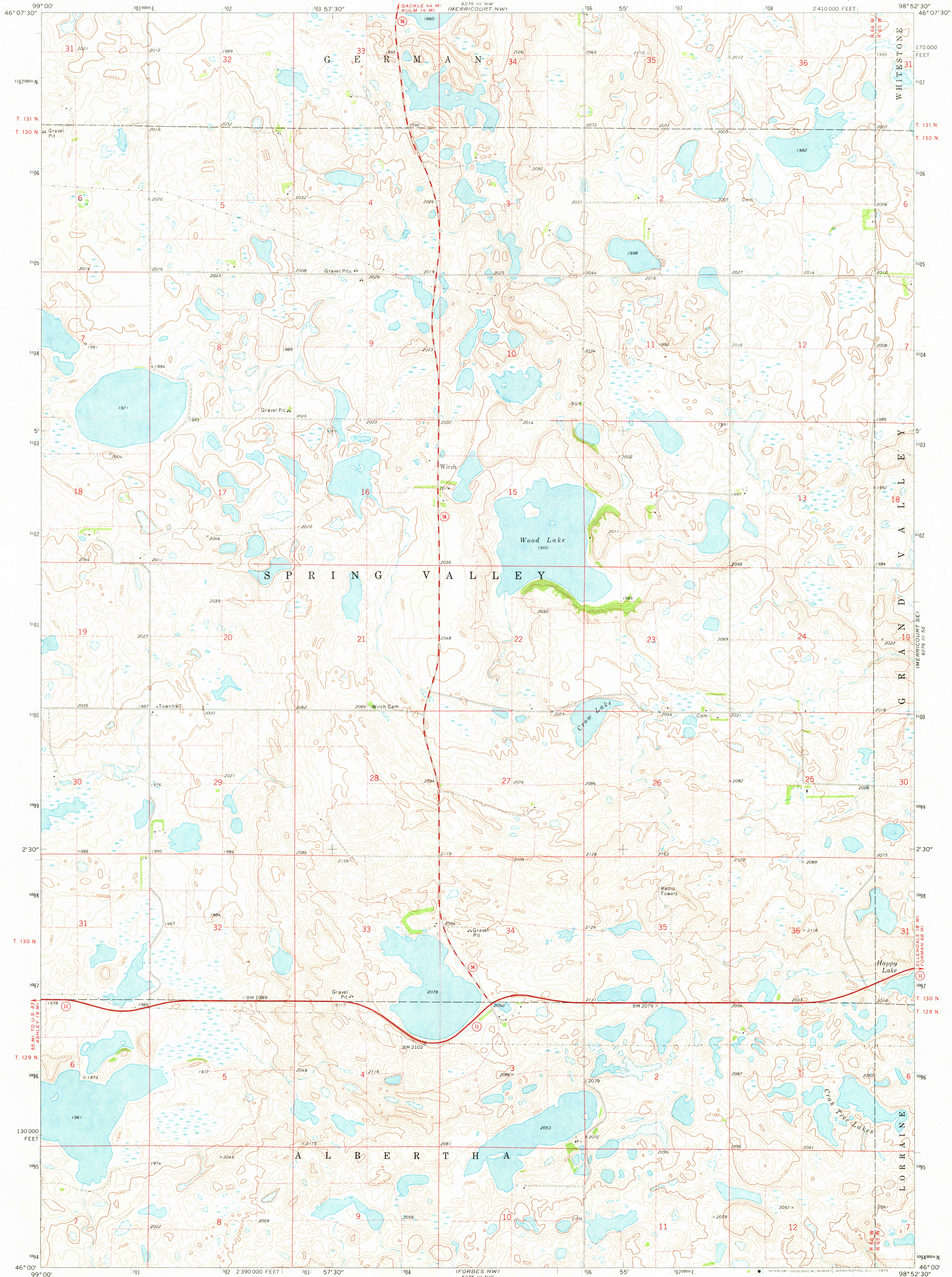
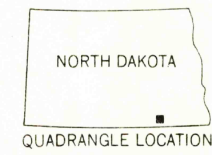
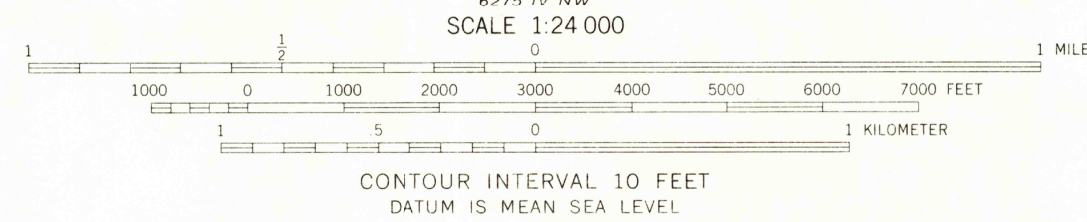
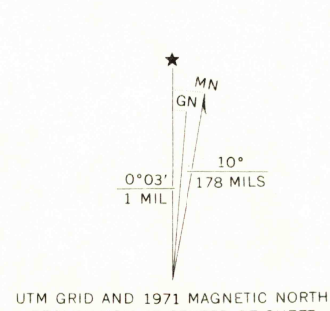


5878 III NW  
(MERRICOURT)



Mapped, edited, and published by the Geological Survey  
Control by USGS and USC&GS  
Topography by photogrammetric methods from aerial photographs taken 1967. Field checked 1971  
Polyconic projection. 1927 North American datum  
10,000-foot grid based on North Dakota coordinate system, south zone  
1000-meter Universal Transverse Mercator grid ticks, zone 14, shown in blue  
Fine red dashed lines indicate selected fence and field lines where generally visible on aerial photographs  
This information is unclassified



ROAD CLASSIFICATION  
Primary highway, hard surface  
Secondary highway, hard surface  
Light duty road, hard or improved surface  
Unimproved road  
Interstate Route  
U. S. Route  
State Route

THIS MAP COMPLIES WITH NATIONAL MAP ACCURACY STANDARDS  
FOR SALE BY U. S. GEOLOGICAL SURVEY, DENVER, COLORADO 80225, OR WASHINGTON, D. C. 20242  
AND BY THE STATE WATER COMMISSION, BISMARCK, NORTH DAKOTA 58501  
A FOLDER DESCRIBING TOPOGRAPHIC MAPS AND SYMBOLS IS AVAILABLE ON REQUEST

MERRICOURT SW, N. DAK.  
N4600—W9852.5/7.5

USGS  
HISTORICAL FILE  
TOPOGRAPHIC DIVISION  
AMS 6276 III SW—SERIES V871

1971

MAY 4 1973

2605