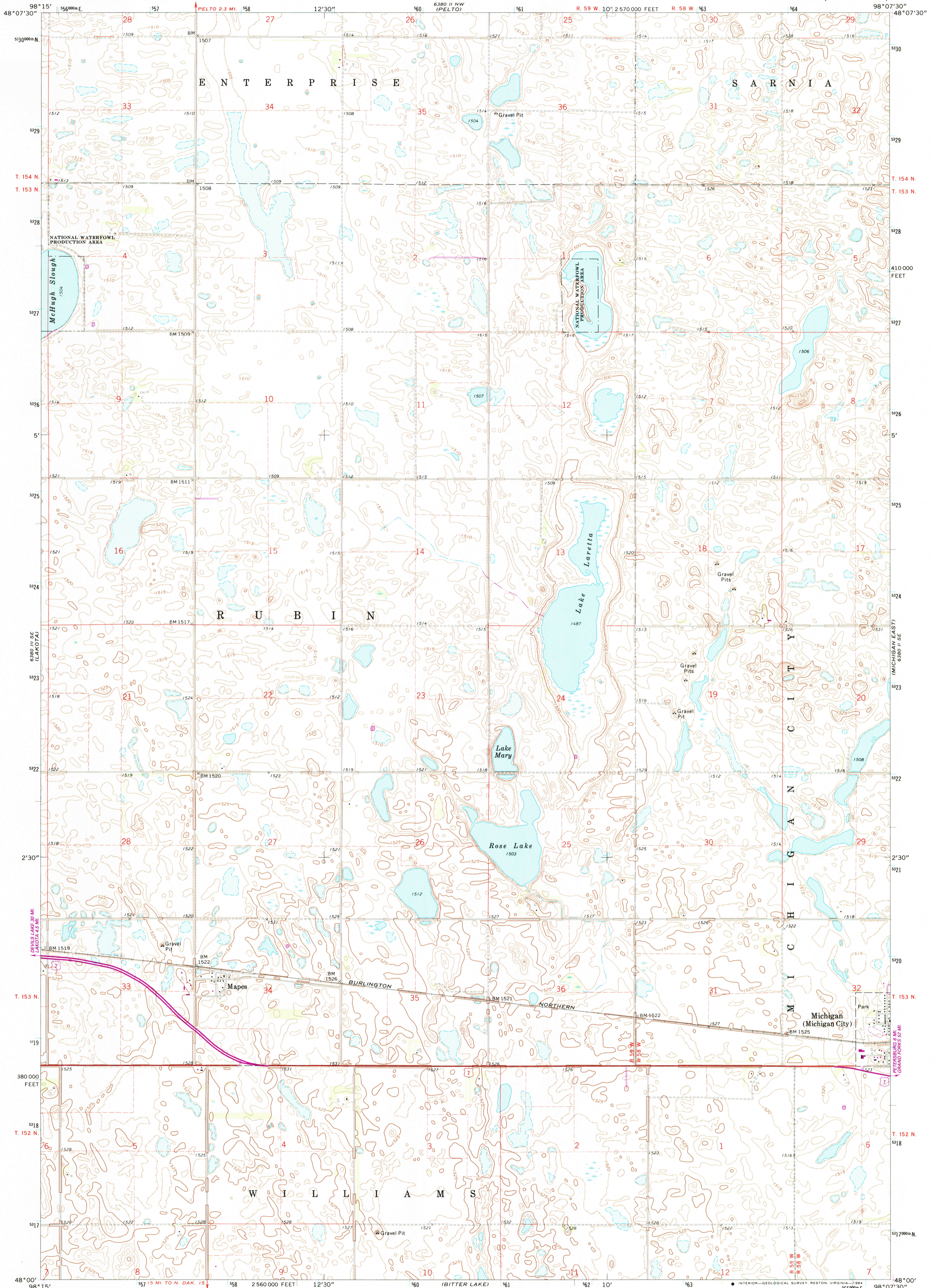


6380 II SE (BURECHET)

UNITED STATES DEPARTMENT OF THE INTERIOR GEOLOGICAL SURVEY

MICHIGAN WEST QUADRANGLE NORTH DAKOTA-NELSON CO. 7.5 MINUTE SERIES (TOPOGRAPHIC)

6380 II NE (WHITMAN)



Maped, edited, and published by the Geological Survey Control by USGS and USCGS Topography by photogrammetric methods from aerial photographs taken 1970. Field checked 1971. Projection and 10,000-foot grid ticks: North Dakota coordinate system, north zone (Lambert conformal conic) 1000-meter Universal Transverse Mercator grid ticks, zone 14, shown in blue. 1927 North American datum To place on the predicted North American Datum 1983, move the projection lines 4 meters north and 27 meters east as shown by dashed corner ticks There may be private inholdings within the boundaries of the National or State reservations shown on this map Revisions shown in purple compiled from aerial photographs taken 1981 and other sources. This information not field checked. Map edited 1983

Scale 1:24,000. Scale bars in feet and kilometers. Contour interval 5 feet. National Geodetic Vertical Datum of 1929. UTM grid and 1983 magnetic north declination at center of sheet. THIS MAP COMPLIES WITH NATIONAL MAP ACCURACY STANDARDS FOR SALE BY U.S. GEOLOGICAL SURVEY, DENVER, COLORADO 80225, OR RESTON, VIRGINIA 22092 AND NORTH DAKOTA WATER COMMISSION, BISMARCK, NORTH DAKOTA 58501 A FOLDER DESCRIBING TOPOGRAPHIC MAPS AND SYMBOLS IS AVAILABLE ON REQUEST

ROAD CLASSIFICATION: Primary highway, hard surface; Secondary highway, hard surface; Unimproved road. Light-duty road, hard or improved surface; U.S. Route; State Route. MICHIGAN WEST, N. DAK. 48098-A2-TF-024 1971 PHOTOREVISED 1983 DMA 6380 II SW-SERIES 9871

RETURN TO: USGS AND HISTORICAL MAP ARCHIVES