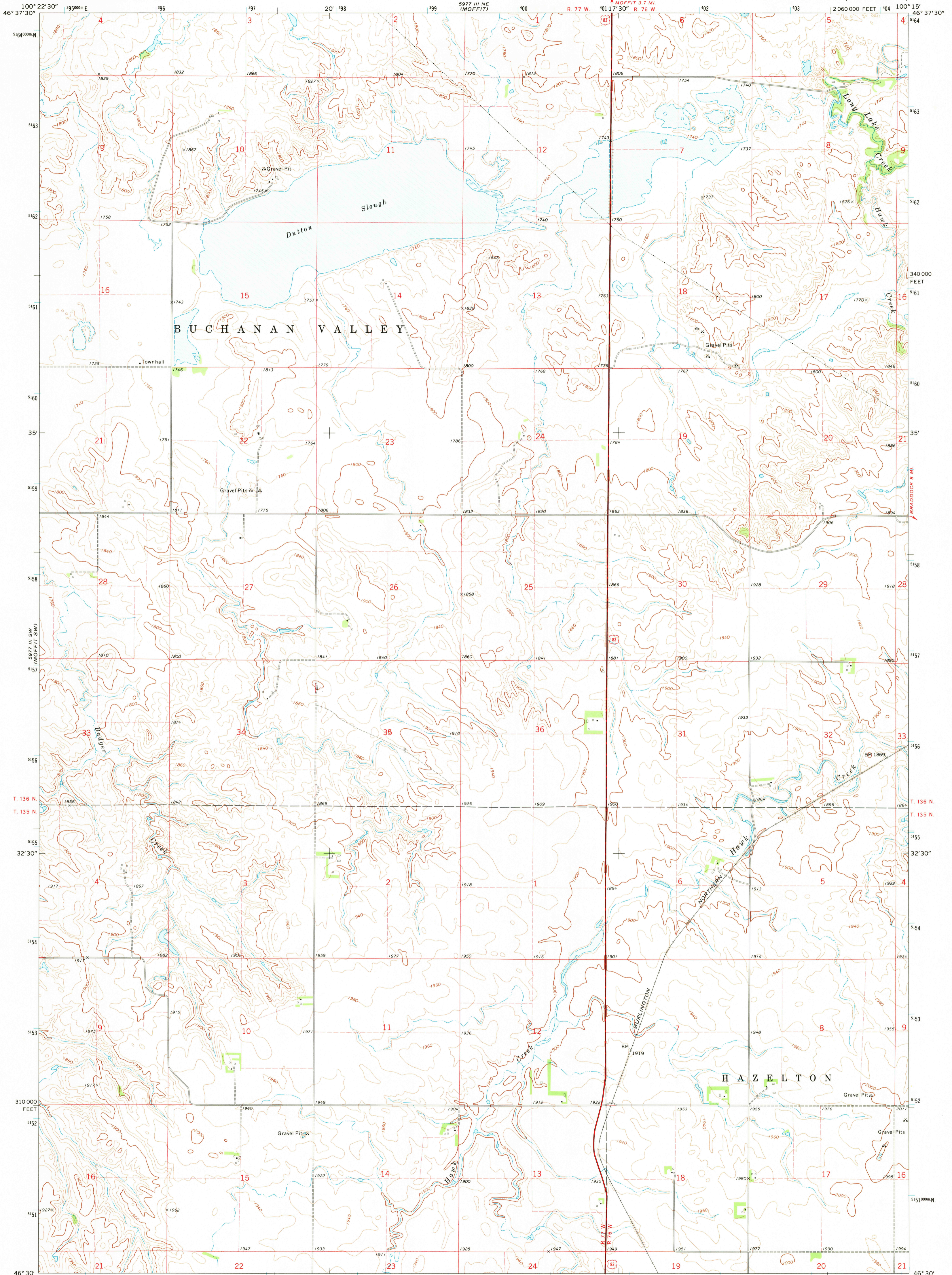


5977 III NE  
MOFFIT 1.5 MI



Mapped, edited, and published by the Geological Survey

Control by USGS and USC&GS

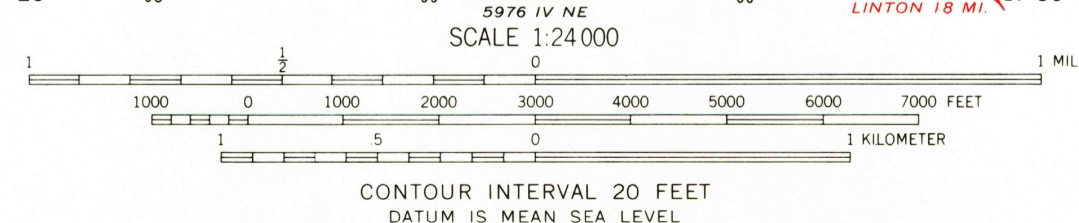
Topography by photogrammetric methods from aerial photographs taken 1969. Field checked 1971

Polyconic projection. 1927 North American datum 10,000-foot grid based on North Dakota coordinate system, south zone. 1000-meter Universal Transverse Mercator grid ticks, zone 14, shown in blue

Fine red dashed lines indicate selected fence and field lines where generally visible on aerial photographs. This information is unchecked



UTM GRID AND 1971 MAGNETIC NORTH DECLINATION AT CENTER OF SHEET



SCALE 1:24 000

CONTOUR INTERVAL 20 FEET

DATUM IS MEAN SEA LEVEL



QUADRANGLE LOCATION

ROAD CLASSIFICATION

Primary highway, hard surface	Light-duty road, hard or improved surface
Secondary highway, hard surface	Unimproved road
Interstate Route	U. S. Route
	State Route

USGS  
Historical File  
Topographic Division

MOFFIT SE, N. DAK.  
N4630-W10015/7.5

1971

AMS 5977 III SE—SERIES 8781

*Handwritten notes:*  
Dungen  
2500  
50 paces