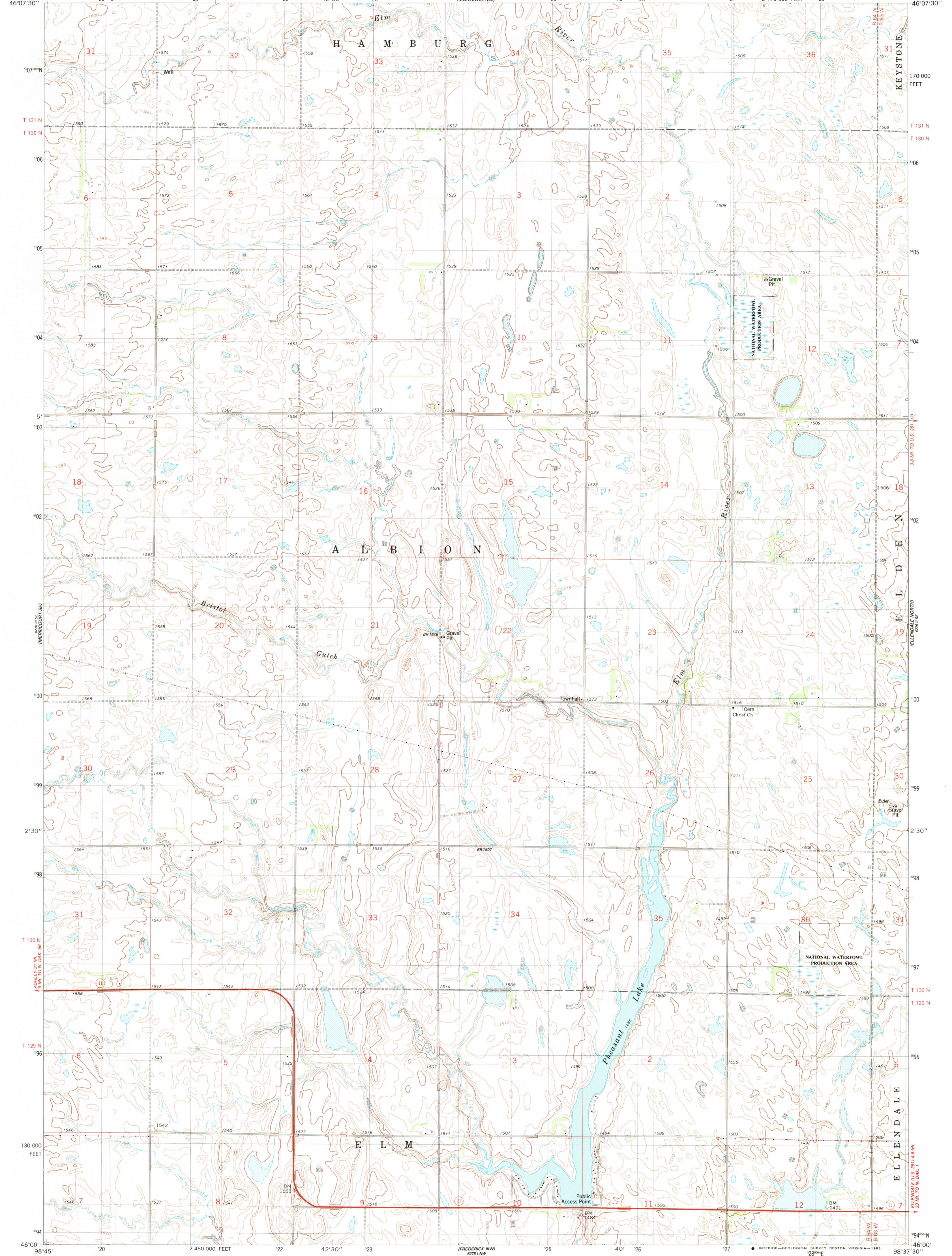


82° 45' W
100° 00' N

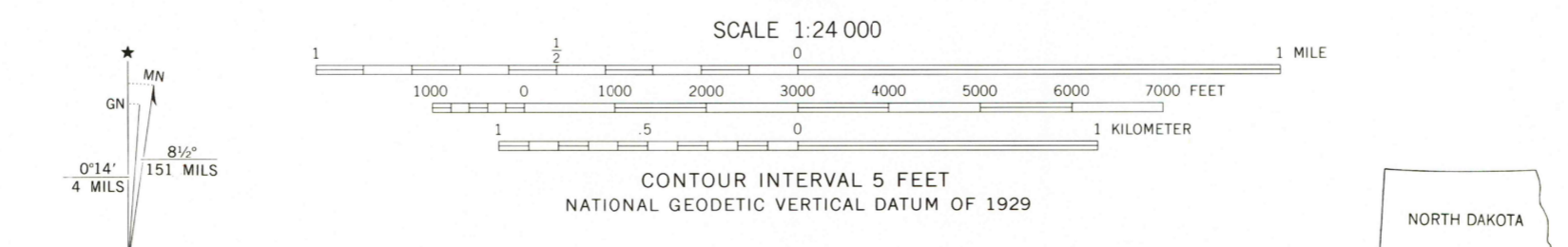
UNITED STATES
DEPARTMENT OF THE INTERIOR
GEOLOGICAL SURVEY

MONANGO SW QUADRANGLE
NORTH DAKOTA—DICKY CO.
7.5 MINUTE SERIES (TOPOGRAPHIC)

82° 45' W
100° 00' N



Mapped, edited, and published by the Geological Survey
Control by USGS and NOS/NOAA
Topography by photogrammetric methods from aerial photographs taken 1974-75. Field checked 1977. Map edited 1982
Projection and 10,000-foot grid ticks: North Dakota coordinate system, south zone (Lambert conformal conic)
1000-meter Universal Transverse Mercator grid, zone 14 1927 North American Datum
To place on the predicted North American Datum 1983 move the projection lines 5 meters north and 31 meters east as shown by dashed corner ticks
There may be private inholdings within the boundaries of the National or State reservations shown on this map
Fine red dashed lines indicate selected fence and field lines where generally visible on aerial photographs
This information is unchecked



ROAD CLASSIFICATION

Primary highway, hard surface	Light-duty road, hard or improved surface
Secondary highway, hard surface	Unimproved road
Interstate Route	U. S. Route
	State Route

SCALE 1:24 000
CONTOUR INTERVAL 5 FEET
NATIONAL GEODETIC VERTICAL DATUM OF 1929
NORTH DAKOTA
QUADRANGLE LOCATION

MONANGO SW, N. DAK.
N4600-W9837.5/7.5
1982
DMA 6276 II SW-SERIES V871

RETURN TO:
USGS AND HISTORICAL MAP ARCHIVES