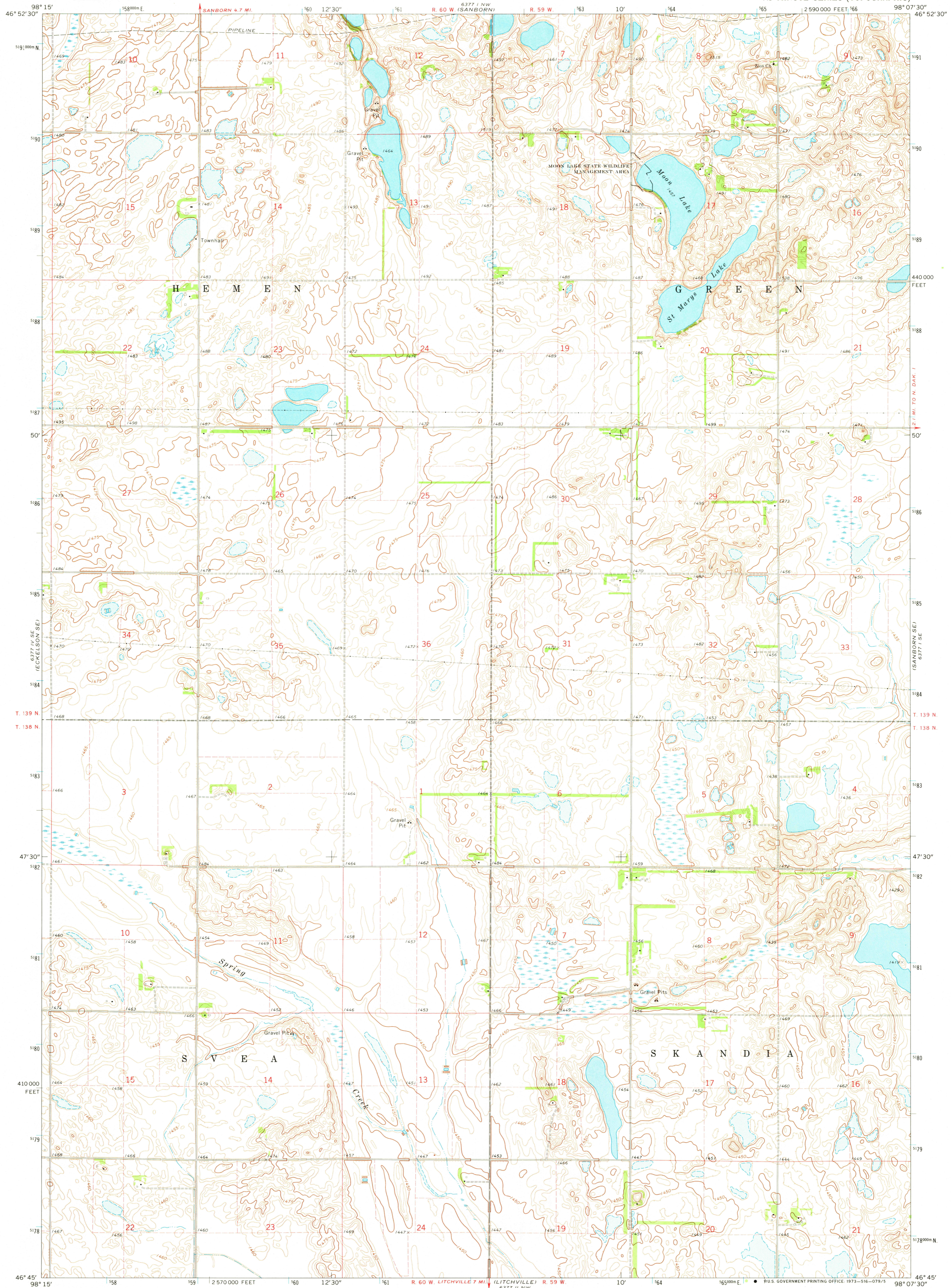


6377 N 95
ECKERSON

UNITED STATES
DEPARTMENT OF THE INTERIOR
GEOLOGICAL SURVEY

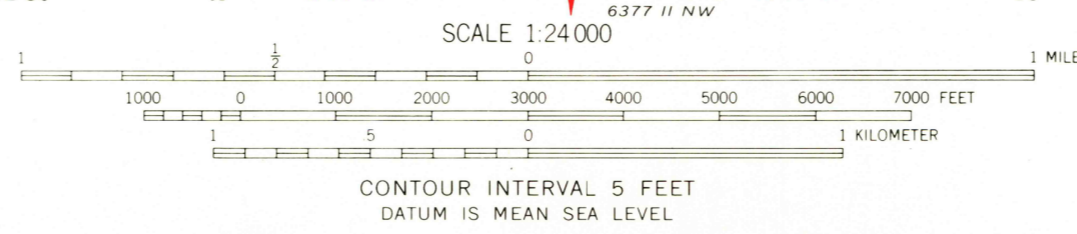
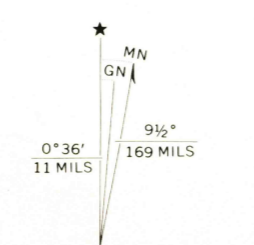
MOON LAKE QUADRANGLE
NORTH DAKOTA—BARNES CO.
7.5 MINUTE SERIES (TOPOGRAPHIC)

VALLEY CITY WEST
6377 N 95



6377 N 95
ECKERSON

Mapped, edited, and published by the Geological Survey
Control by USGS and US&GS
Topography by photogrammetric methods from aerial
photographs taken 1969. Field checked 1970
Polyconic projection. 1927 North American datum
10,000-foot grid based on North Dakota coordinate system,
south zone
1000-meter Universal Transverse Mercator grid ticks,
zone 14, shown in blue
Fine red dashed lines indicate selected fence and field lines where
generally visible on aerial photographs
This information is unchecked



ROAD CLASSIFICATION

Primary highway, hard surface	Light-duty road, hard or improved surface
Secondary highway, hard surface	Unimproved road
Interstate Route	U. S. Route
	State Route

THIS MAP COMPLIES WITH NATIONAL MAP ACCURACY STANDARDS
FOR SALE BY U. S. GEOLOGICAL SURVEY, DENVER, COLORADO 80225, OR WASHINGTON, D. C. 20242
AND BY THE STATE WATER COMMISSION, BISMARCK, NORTH DAKOTA 58501
A FOLDER DESCRIBING TOPOGRAPHIC MAPS AND SYMBOLS IS AVAILABLE ON REQUEST

USGS
HISTORICAL PHOTOGRAPHIC
TOPOGRAPHIC MAPS
MOON LAKE, N. DAK.
N4645-W9807.5/7.5
1970
AMS 6377 I SW—SERIES V871

46.00
2500

MAY 10 1973