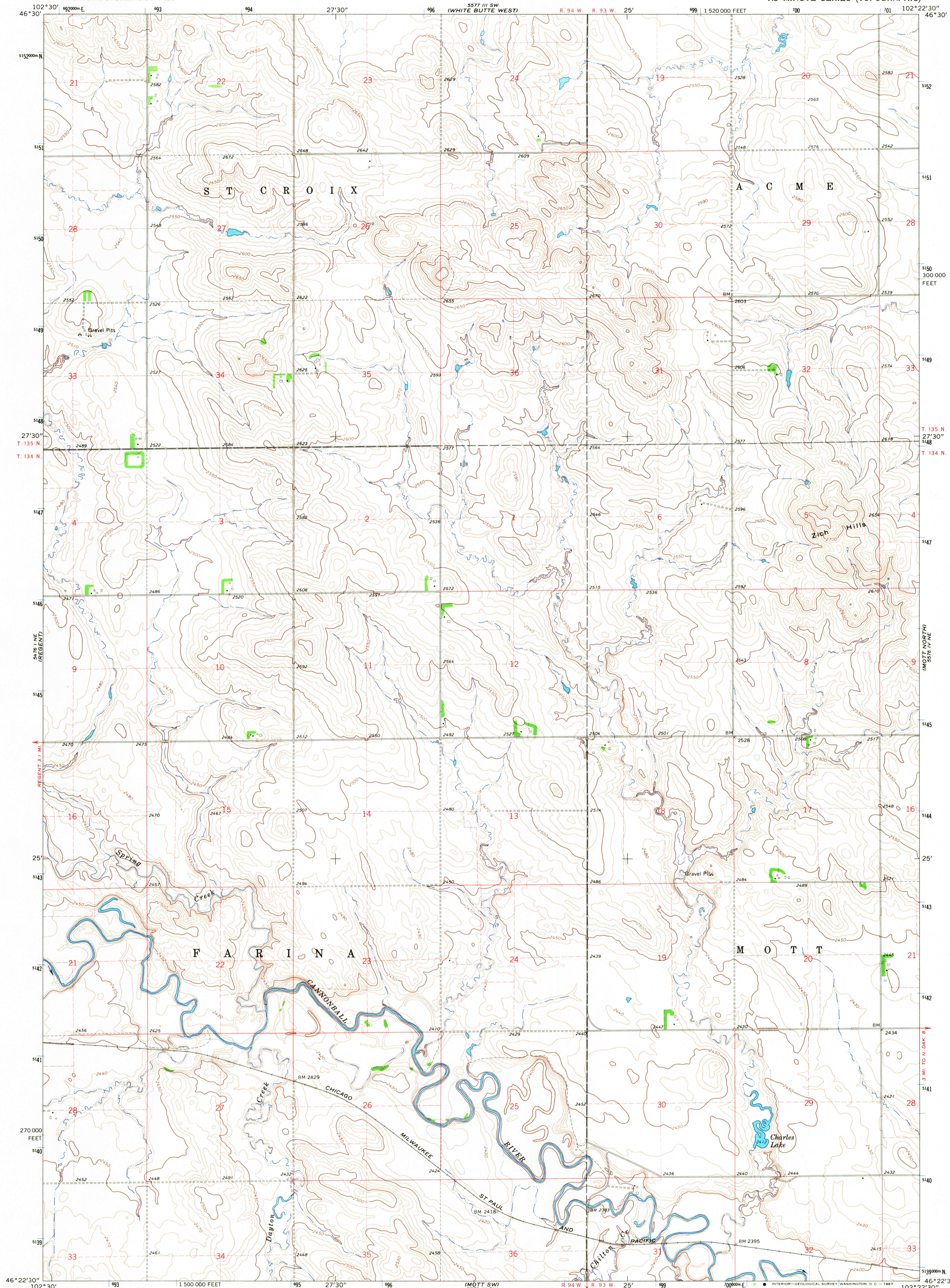
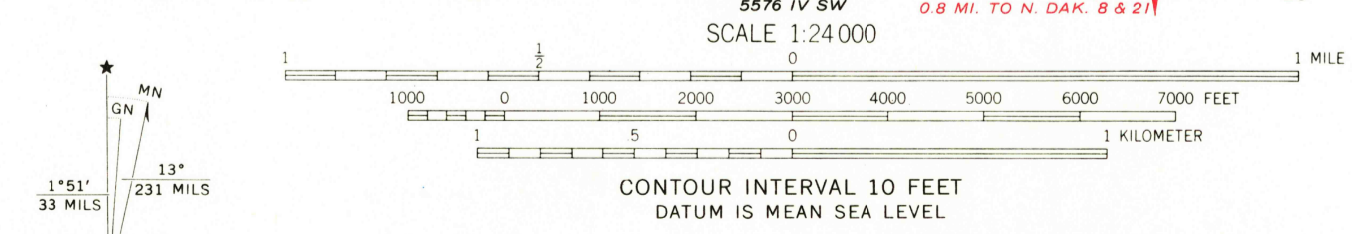


557 1/2 SE  
WHITE BUTTE EAST 1



Mapped, edited, and published by the Geological Survey as part of the Department of the Interior program for the development of the Missouri River Basin Control by USGS and USC&GS  
Topography by photogrammetric methods from aerial photographs taken 1965. Field checked 1966  
Polyconic projection. 1927 North American datum 10,000-foot grid based on North Dakota coordinate system, south zone 1000-meter Universal Transverse Mercator grid ticks, zone 13, shown in blue  
Fine red dashed lines indicate selected fence and field lines where generally visible on aerial photographs. This information is unchecked



THIS MAP COMPLIES WITH NATIONAL MAP ACCURACY STANDARDS  
FOR SALE BY U.S. GEOLOGICAL SURVEY, DENVER, COLORADO 80225, OR WASHINGTON, D. C. 20242  
AND BY THE STATE WATER COMMISSION, BISMARCK, NORTH DAKOTA 58501  
A FOLDER DESCRIBING TOPOGRAPHIC MAPS AND SYMBOLS IS AVAILABLE ON REQUEST

USGS  
Historical File  
Topographic Division

U.S. GEOLOGICAL SURVEY  
NORTH DAKOTA  
FILE COPY  
TOPOGRAPHIC DIVISION

ROAD CLASSIFICATION  
Light-duty Unimproved dirt

MOTT NW, N. DAK.  
N4622.5-W10222.5/7.5

1966  
AMS 5576 IV NW-SERIES V871

MOTT SOUTH  
557 1/2 SE

2825  
MAR 2 1968