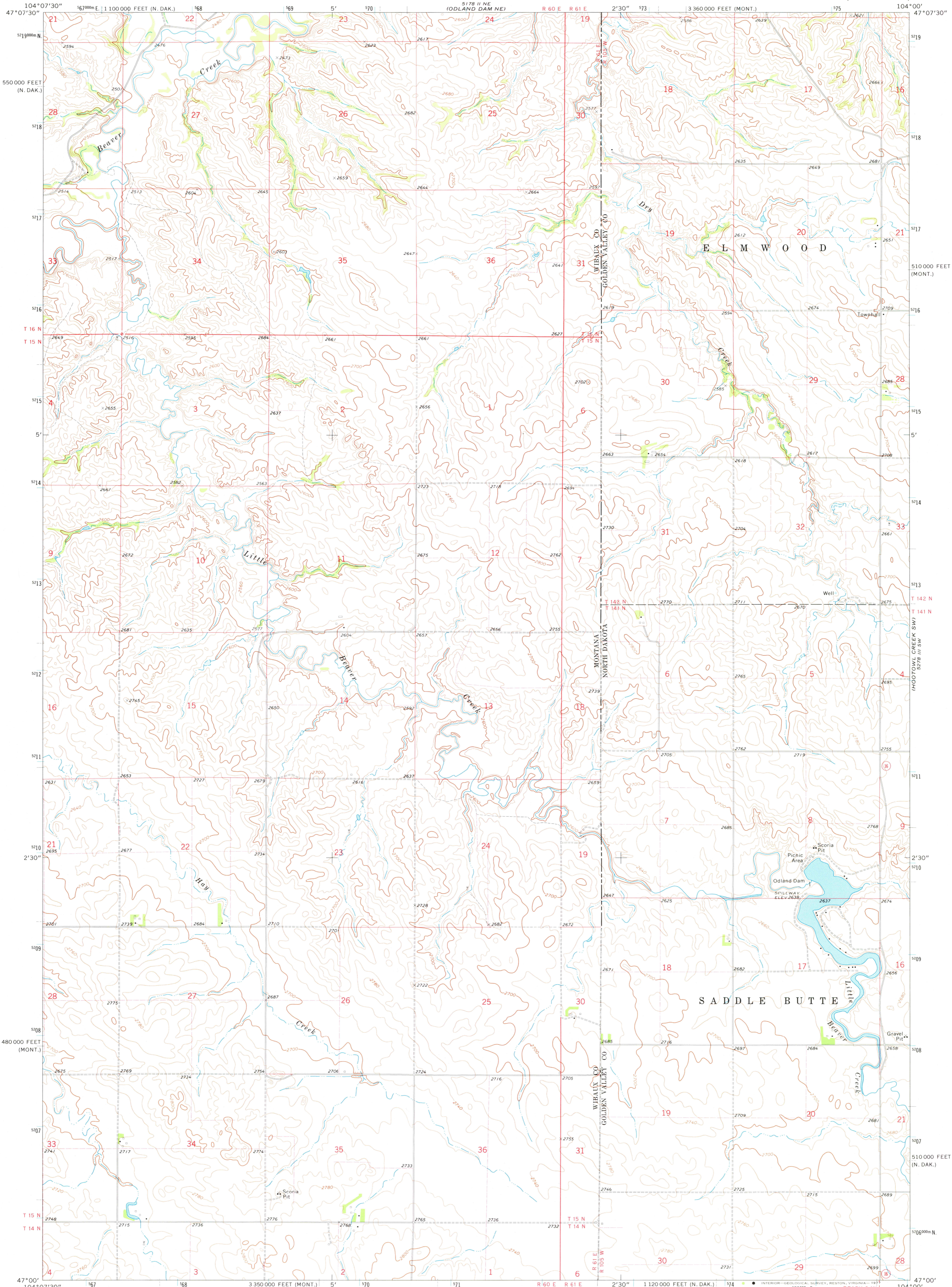
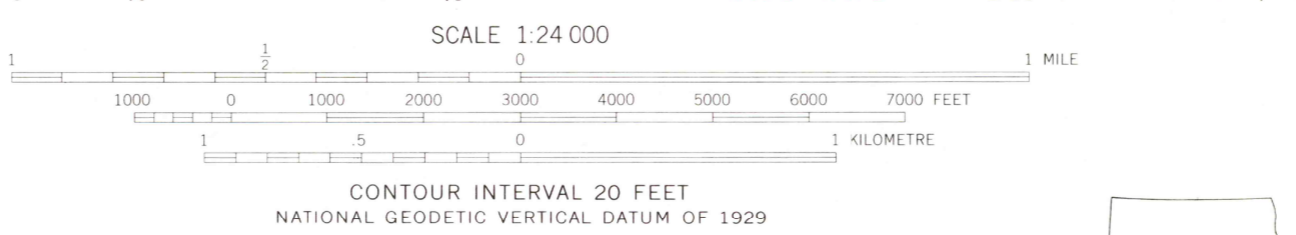
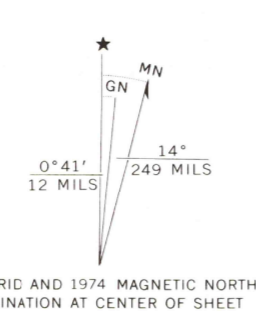


5278 II NE
(HOOD CREEK
WEST)



Mapped, edited, and published by the Geological Survey in cooperation with the North Dakota Water Commission. Control by USGS and NOS/NOAA. Topography by photogrammetric methods from aerial photographs taken 1973. Field checked 1974. Projection: Montana coordinate system, central zone (Lambert conformal conic). 10,000-foot grid ticks based on Montana coordinate system, central zone and North Dakota coordinate, south zone 1000-metre Universal Transverse Mercator grid ticks, zone 13, shown in blue. 1927 North American datum. Fine red dashed lines indicate selected fence and field lines where generally visible on aerial photographs. This information is unchecked.



ROAD CLASSIFICATION

Primary highway, hard surface	Light-duty road, hard or improved surface
Secondary highway, hard surface	Unimproved road
Interstate Route	U. S. Route
	State Route

THIS MAP COMPLIES WITH NATIONAL MAP ACCURACY STANDARDS FOR SALE BY U. S. GEOLOGICAL SURVEY, DENVER, COLORADO 80225, OR RESTON, VIRGINIA 22092 AND BY THE STATE WATER COMMISSION, BISMARCK, NORTH DAKOTA 58501. A FOLDER DESCRIBING TOPOGRAPHIC MAPS AND SYMBOLS IS AVAILABLE ON REQUEST.

APR 15 1977