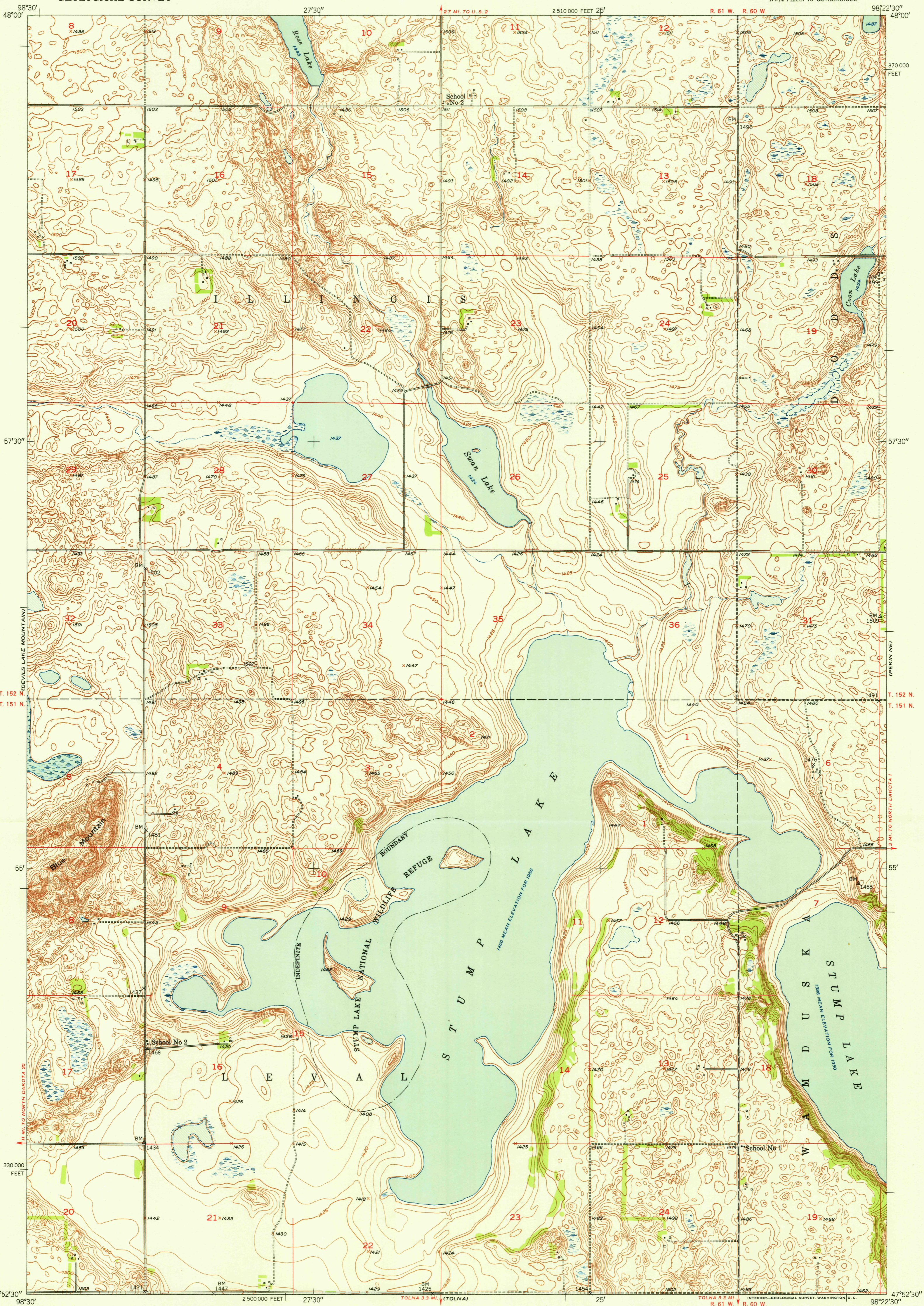
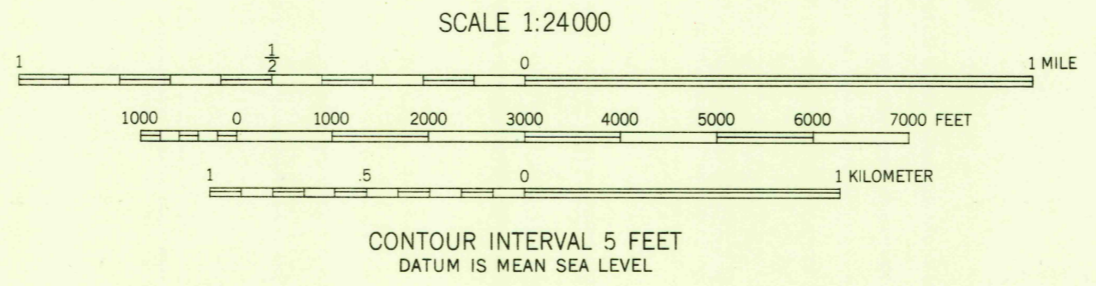
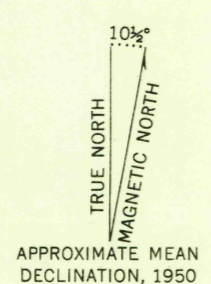


U. S. G. S.
FILE COPY
Inspection and Editing



Mapped, edited, and published by the Geological Survey as part of the Department of the Interior program for the development of the Missouri River Basin. Control by USGS and USC&GS. Culture and drainage in part compiled from aerial photographs taken 1949. Topography by plane-table methods 1950. Polyconic projection. 1927 North American datum. 10,000-foot grid based on North Dakota coordinate system, north zone.



ROAD CLASSIFICATION

| | | | |
|-------------|----------------|-----------------|----------------|
| Heavy-duty | 4 LANE 16 LANE | Light-duty | 2 LANE 16 LANE |
| Medium-duty | 4 LANE 16 LANE | Unimproved dirt | |
| U. S. Route | □ | State Route | ○ |

U. S. G. S.
FILE COPY
Inspection and Editing

PEKIN NW, N. DAK.
NW/4 PEKIN 15' QUADRANGLE
N4752.5-W9822.5/7.5
EDITION OF 1951

THIS MAP COMPLIES WITH NATIONAL MAP ACCURACY STANDARDS
FOR SALE BY U. S. GEOLOGICAL SURVEY, FEDERAL CENTER, DENVER, COLORADO OR WASHINGTON 25, D. C.
AND BY THE STATE WATER CONSERVATION COMMISSION, BISMARCK, NORTH DAKOTA
A FOLDER DESCRIBING TOPOGRAPHIC MAPS AND SYMBOLS IS AVAILABLE ON REQUEST