

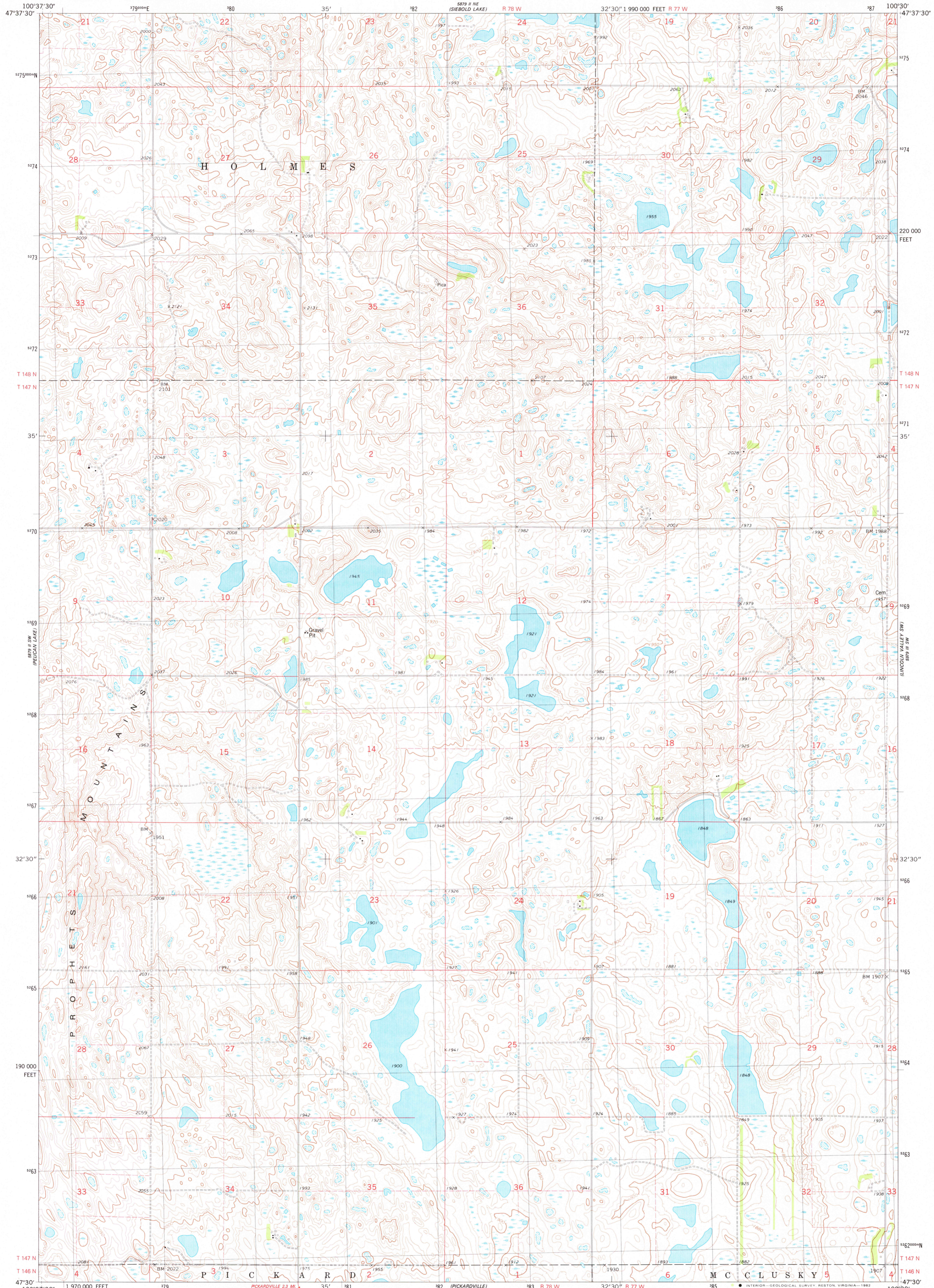
100°37'30"
47°37'30"

UNITED STATES
DEPARTMENT OF THE INTERIOR
GEOLOGICAL SURVEY

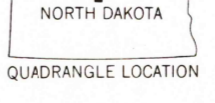
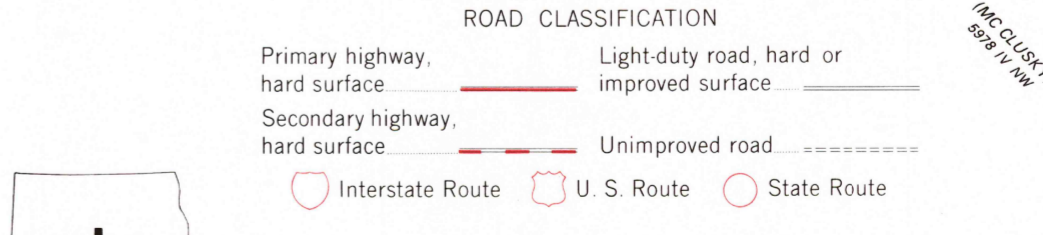
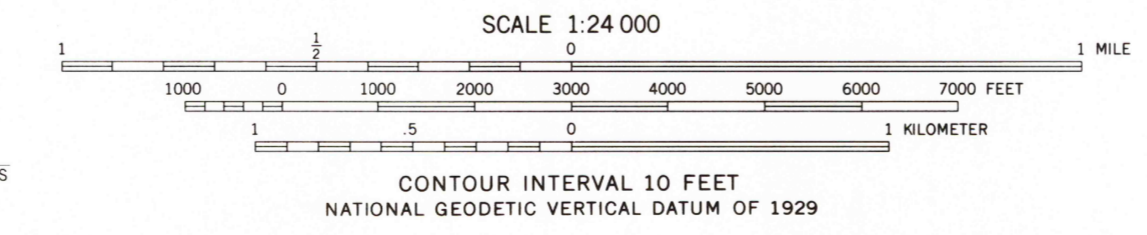
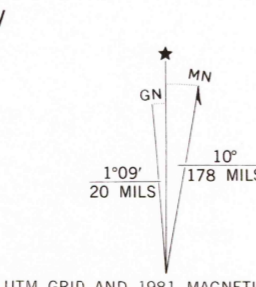
STATE OF NORTH DAKOTA
WATER COMMISSION

PELICAN LAKE SE QUADRANGLE
NORTH DAKOTA-SHERIDAN CO.
7.5 MINUTE SERIES (TOPOGRAPHIC)
SE/4 PELICAN LAKE 15' QUADRANGLE

100°30"
47°30"



Mapped, edited, and published by the Geological Survey in cooperation with the North Dakota Water Commission
Control by USGS and NOS/NOAA
Topography by photogrammetric methods from aerial photographs taken 1978. Field checked 1979. Map edited 1981
Projection and 10,000-foot grid ticks: North Dakota coordinate system, north zone (Lambert conformal conic)
1000-meter Universal Transverse Mercator grid, zone 14
1927 North American Datum
To place on the predicted North American Datum 1983 move the projection lines 4 meters north and 32 meters east as shown by dashed corner ticks
Fine red dashed lines indicate selected fence and field lines where generally visible on aerial photographs
This information is unchecked



PELICAN LAKE SE, N. DAK.
SE/4 PELICAN LAKE 15' QUADRANGLE
N4730-W10030/7.5
1981
DMA 5879 II SE-SERIES 8871

JAN 4 1982

1900