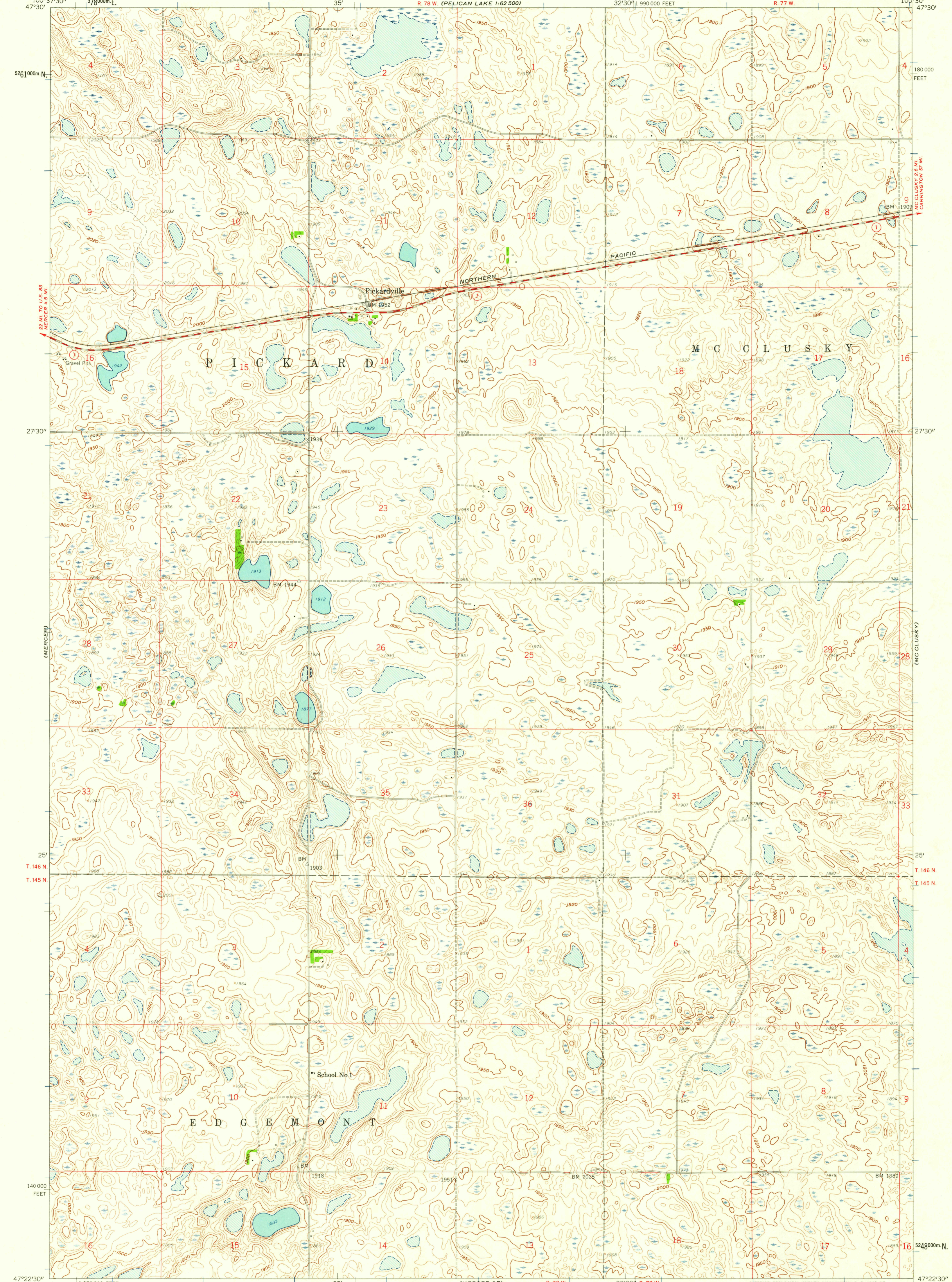


UNITED STATES  
DEPARTMENT OF THE INTERIOR  
GEOLOGICAL SURVEY

PICKARDVILLE QUADRANGLE  
NORTH DAKOTA-SHERIDAN CO.  
7.5 MINUTE SERIES (TOPOGRAPHIC)

PELICAN LAKE  
1:62,500

LINCOLN VALLEY  
1:62,500



Mapped, edited, and published by the Geological Survey as part of the Department of the Interior program for the development of the Missouri River Basin. Control by USGS and USC&GS. Topography from aerial photographs by photogrammetric methods. Aerial photographs taken 1957. Field check 1959. Polyconic projection. 1927 North American datum. 10,000-foot grid based on North Dakota coordinate system, north zone. 1000-meter Universal Transverse Mercator grid ticks, zone 14, shown in blue.

SCALE 1:24,000

1 MILE / 1 KILOMETER

CONTOUR INTERVAL 10 FEET  
DATUM IS MEAN SEA LEVEL

APPROXIMATE MEAN DECLINATION, 1959

THIS MAP COMPLIES WITH NATIONAL MAP ACCURACY STANDARDS FOR SALE BY U. S. GEOLOGICAL SURVEY, DENVER 25, COLORADO OR WASHINGTON 25, D. C. AND BY THE STATE WATER CONSERVATION COMMISSION, BISMARCK, NORTH DAKOTA. A FOLDER DESCRIBING TOPOGRAPHIC MAPS AND SYMBOLS IS AVAILABLE ON REQUEST.

USGS  
Historical File  
Topographic Division

ROAD CLASSIFICATION

Medium-duty	Light-duty
Unimproved dirt	State Route

QUADRANGLE LOCATION

PICKARDVILLE, N. DAK.  
N4722.5-W10030/7.5

1959

U.S.G.S.  
FILE COPY  
TOPOGRAPHIC DIVISION

JAN 12 1961  
2150