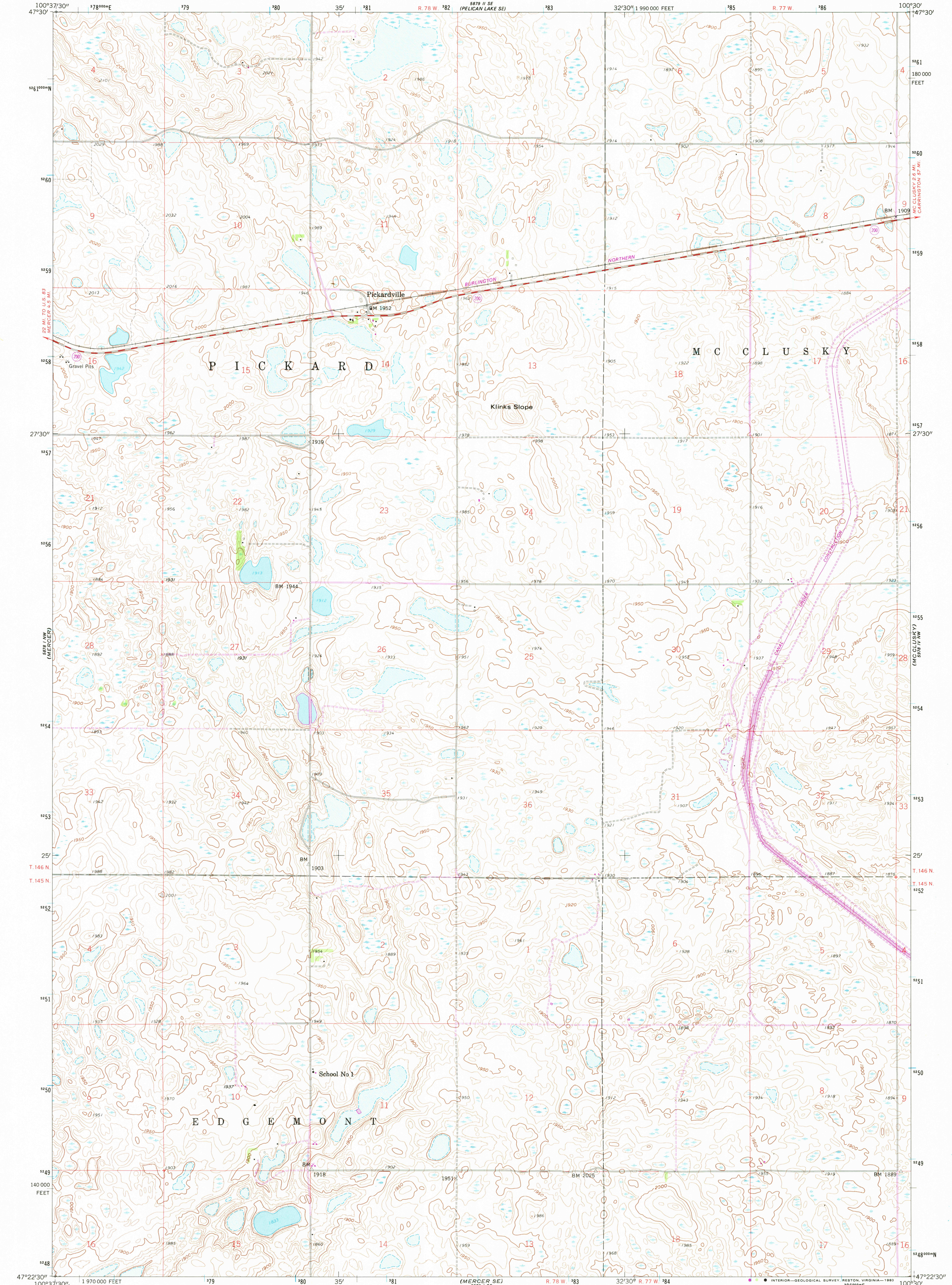
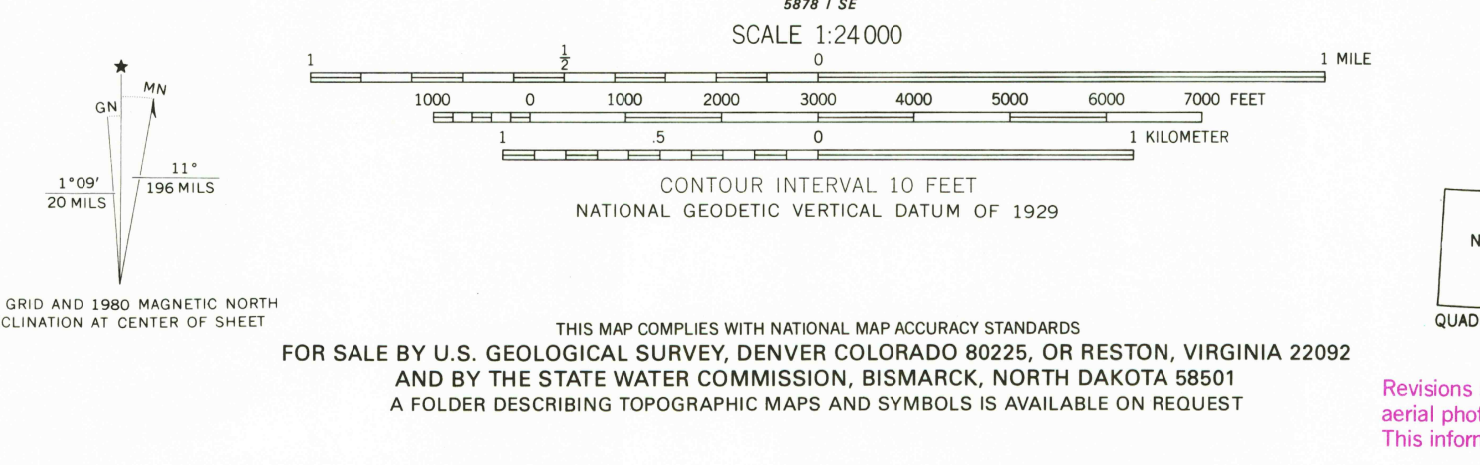


UNITED STATES
DEPARTMENT OF THE INTERIOR
GEOLOGICAL SURVEY

PICKARDVILLE QUADRANGLE
NORTH DAKOTA - SHERIDAN CO.
7.5 MINUTE SERIES (TOPOGRAPHIC)



Mapped, edited, and published by the Geological Survey as part of the Department of the Interior program for the development of the Missouri River Basin. Control by USGS and USC&GS. Topography from aerial photographs by photogrammetric methods. Aerial photographs taken 1957. Field check 1959. Polyconic projection. 10,000-foot grid based on North Dakota coordinate system, north zone. 1000-meter Universal Transverse Mercator grid ticks, zone 14, shown in blue. 1927 North American Datum. To place on the predicted North American Datum 1983 move the projection lines 4 meters north and 33 meters east as shown by dashed corner ticks.



ROAD CLASSIFICATION
 Primary highway, all weather, hard surface
 Secondary highway, all weather, hard surface
 Light duty road, all weather, improved surface
 Unimproved road, fair or dry weather
 Interstate Route
 U. S. Route
 State Route

USGS
Historical File
Topographic Division
PICKARDVILLE, N. DAK.
N4722.5-W10030/7.5
1959
PHOTOREVISED 1980
DMA 5878 I NE-SERIES V871

SEP 24 1980
900