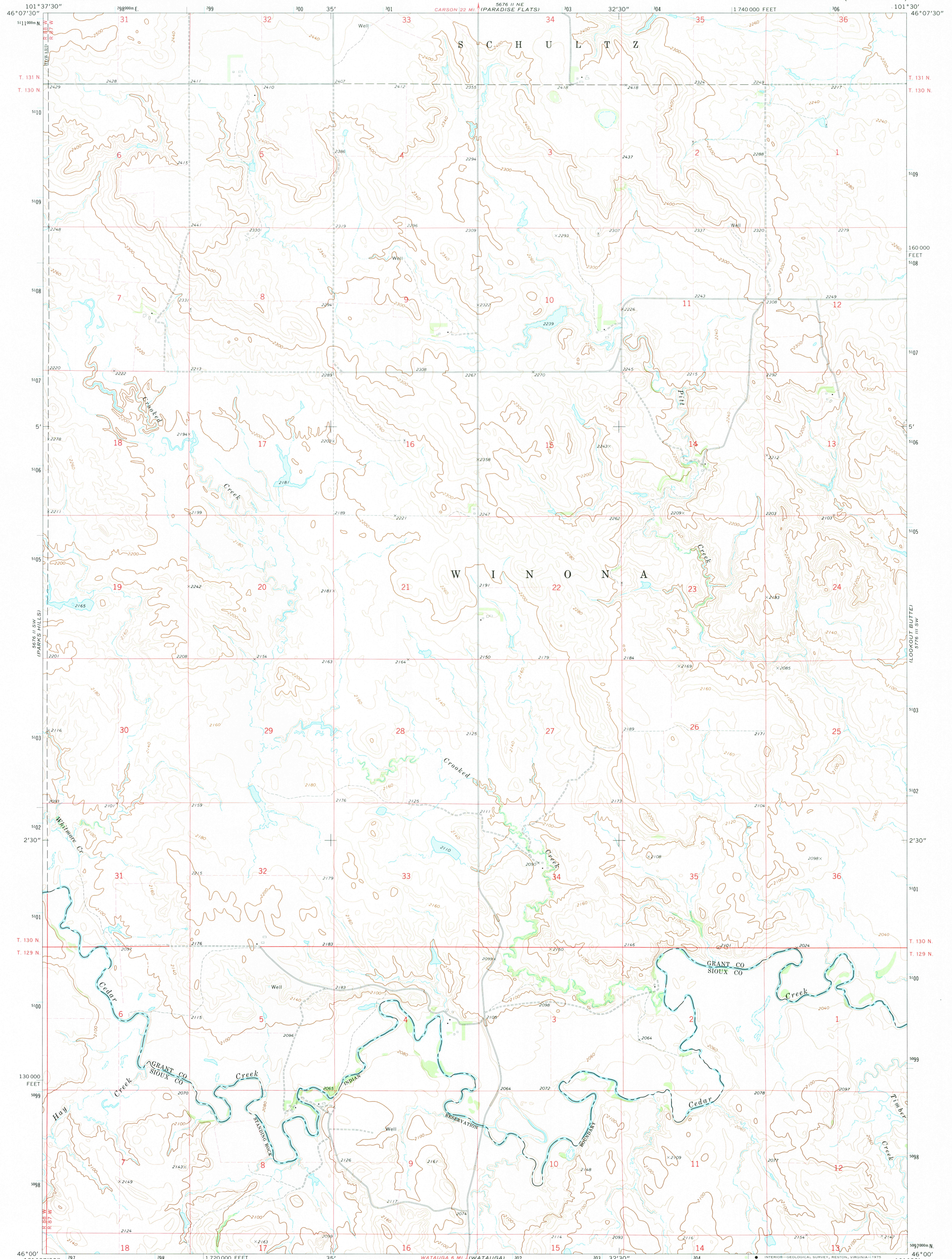
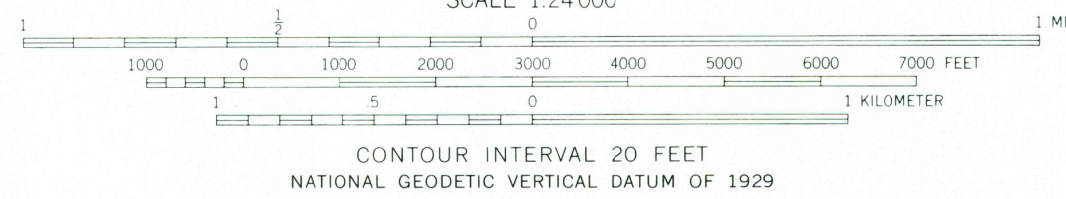
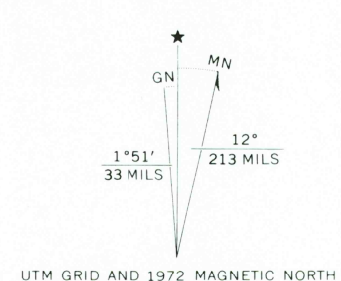


UNITED STATES
DEPARTMENT OF THE INTERIOR
GEOLOGICAL SURVEY

PITT CREEK QUADRANGLE
NORTH DAKOTA
7.5 MINUTE SERIES (TOPOGRAPHIC)



Mapped, edited, and published by the Geological Survey
Control by USGS and USC&GS
Topography by photogrammetric methods from aerial photographs taken 1972. Field checked 1972
Projection and 10,000-foot grid ticks: North Dakota coordinate system, south zone (Lambert conformal conic)
1000-meter Universal Transverse Mercator grid ticks, zone 14, shown in blue. 1927 North American datum
Fine red dashed lines indicate selected fence and field lines where generally visible on aerial photographs
This information is unclassified



ROAD CLASSIFICATION
Primary highway, hard surface ——— Light-duty road, hard or improved surface ———
Secondary highway, hard surface ——— Unimproved road ———
○ Interstate Route □ U. S. Route ○ State Route

THIS MAP COMPLIES WITH NATIONAL MAP ACCURACY STANDARDS
FOR SALE BY U. S. GEOLOGICAL SURVEY, DENVER, COLORADO 80225, OR RESTON, VIRGINIA 22092
AND BY THE STATE WATER COMMISSION, BISMARCK, NORTH DAKOTA 58501
A FOLDER DESCRIBING TOPOGRAPHIC MAPS AND SYMBOLS IS AVAILABLE ON REQUEST

U.S. Geological Survey
Historical File
Topographic Division

PITT CREEK, N. DAK.
N4600—W10130/7.5

1972
AMS 5676 II SE—SERIES V871

MAR 21 1975