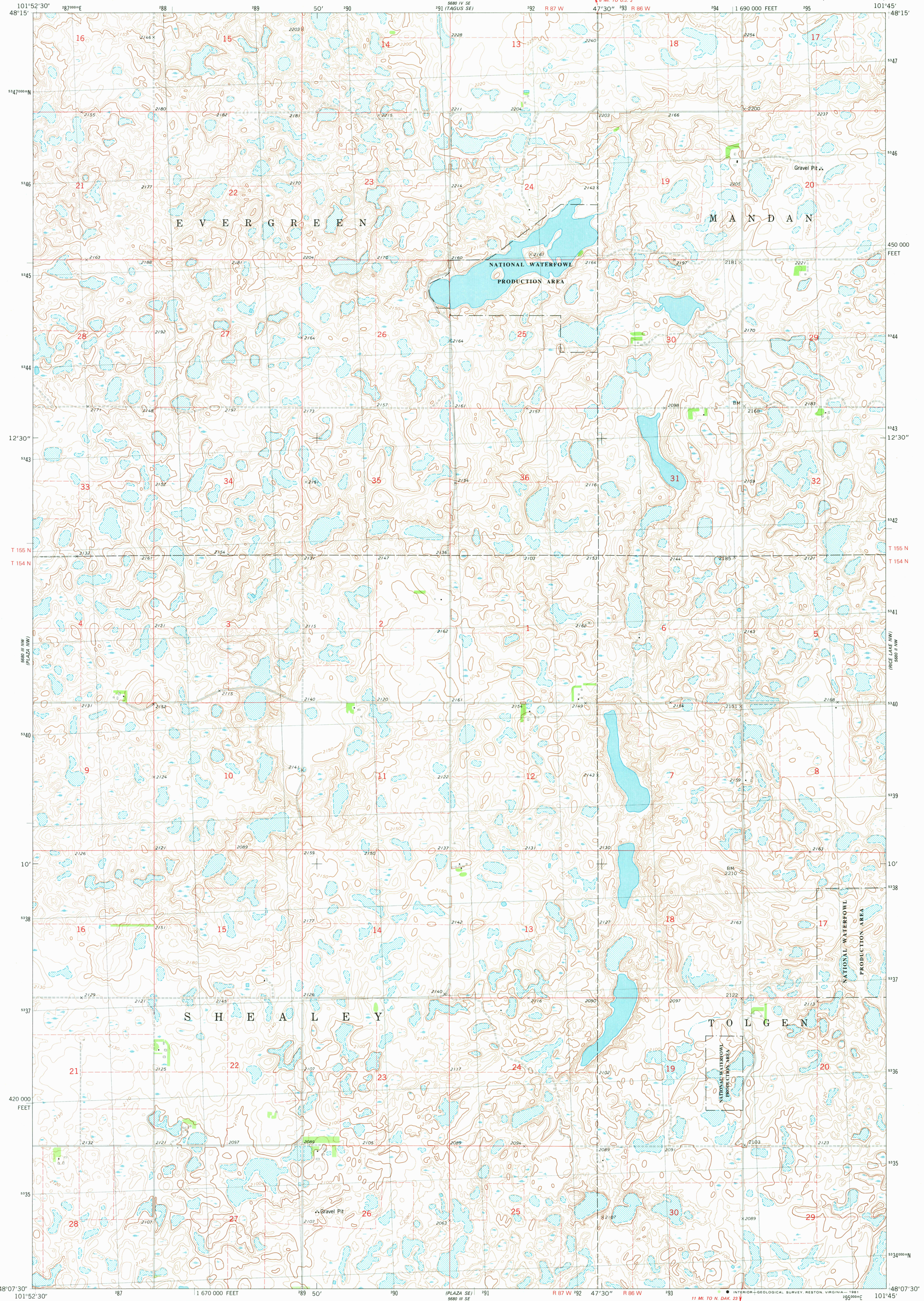


5880 III NE (TOPOGRAPHIC)

UNITED STATES
DEPARTMENT OF THE INTERIOR
GEOLOGICAL SURVEY

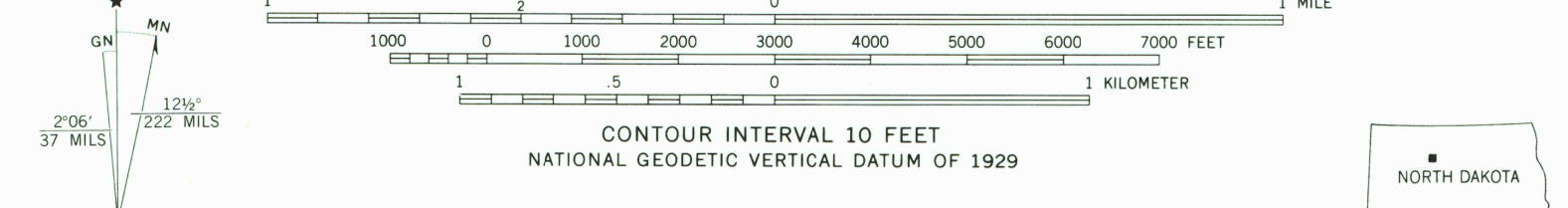
PLAZA NE QUADRANGLE
NORTH DAKOTA—WARD CO.
7.5 MINUTE SERIES (TOPOGRAPHIC)

5880 III NE (TOPOGRAPHIC)



Mapped, edited, and published by the Geological Survey

Control by USGS and NOS/NOAA
Topography by photogrammetric methods from aerial photographs taken 1973. Field checked 1976. Map edited 1980
Projection and 10,000-foot grid ticks: North Dakota coordinate system, north zone (Lambert conformal conic)
1000-meter Universal Transverse Mercator grid, zone 14 1927 North American Datum
To place on the predicted North American Datum 1983 move the projection lines 4 meters north and 35 meters east as shown by dashed corner ticks
There may be private inholdings within the boundaries of the National or State reservations shown on this map
Fine red dashed lines indicate selected fence and field lines where generally visible on aerial photographs
This information is unchecked



ROAD CLASSIFICATION
Primary highway, hard surface
Secondary highway, hard surface
Unimproved road
Light-duty road, hard or improved surface
Interstate Route
U. S. Route
State Route

UTM GRID AND 1980 MAGNETIC NORTH DECLINATION AT CENTER OF SHEET
THIS MAP COMPLIES WITH NATIONAL MAP ACCURACY STANDARDS
FOR SALE BY U. S. GEOLOGICAL SURVEY, DENVER, COLORADO 80225, OR RESTON, VIRGINIA 22092
AND STATE WATER COMMISSION, BISMARCK, NORTH DAKOTA 58501
A FOLDER DESCRIBING TOPOGRAPHIC MAPS AND SYMBOLS IS AVAILABLE ON REQUEST

QUADRANGLE LOCATION
NORTH DAKOTA
PLAZA NE, N. DAK.
N4807.5-W10145/7.5
1980
DMA 5880 III NE—SERIES Y871

USGS
Historical File
National Mapping Div.

1700
MAR 2 1981