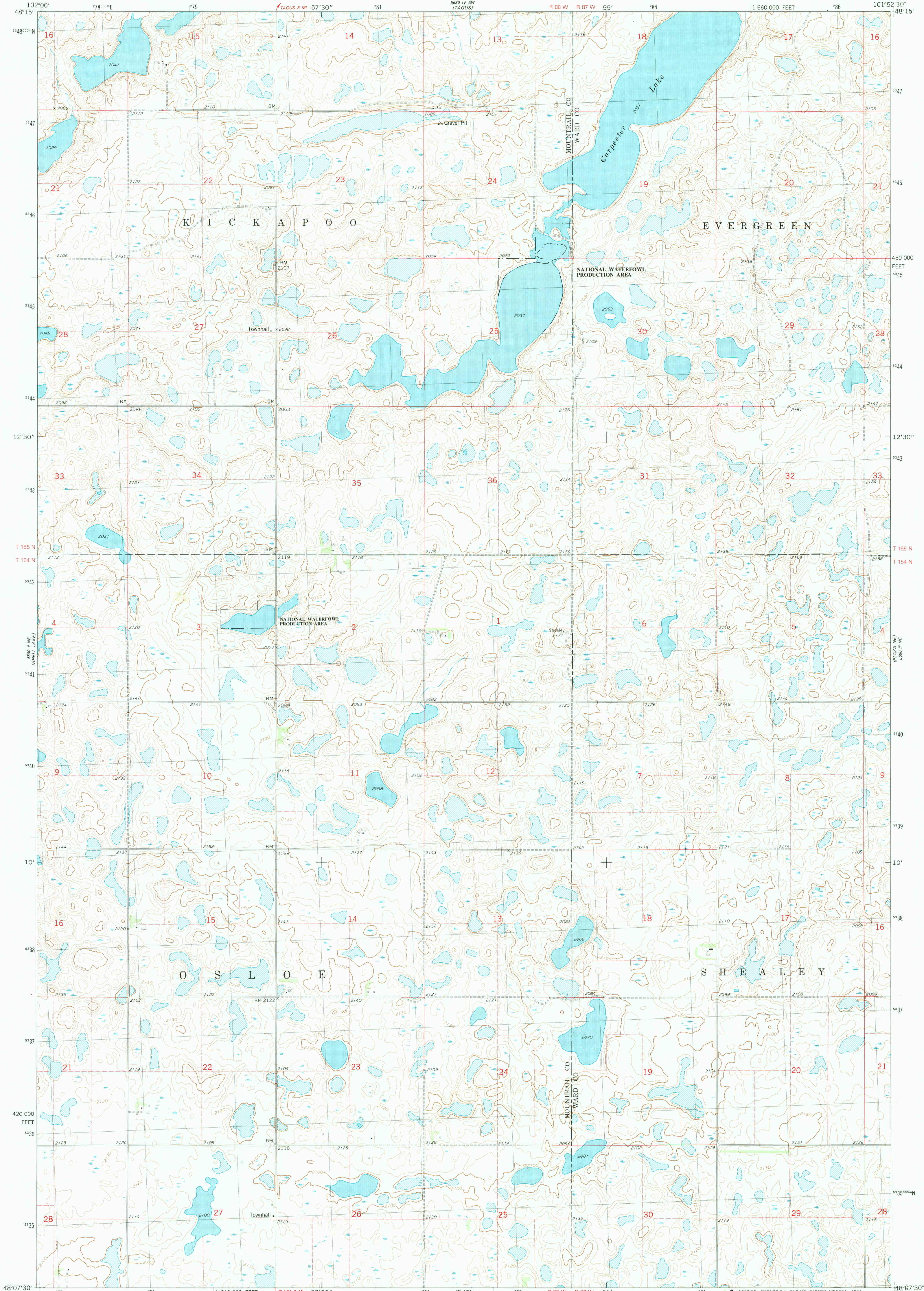


5680 IV SE
(TAGUS SE)

UNITED STATES
DEPARTMENT OF THE INTERIOR
GEOLOGICAL SURVEY

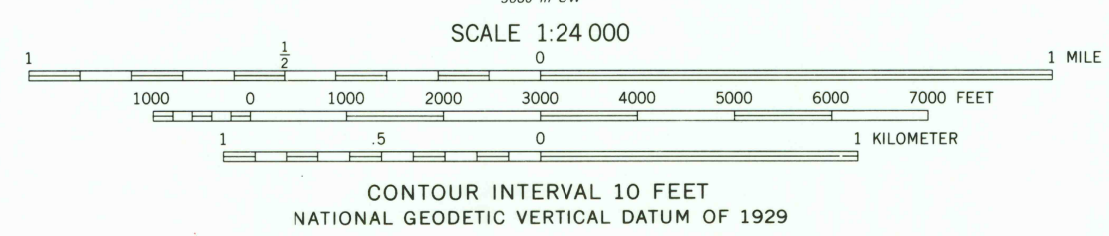
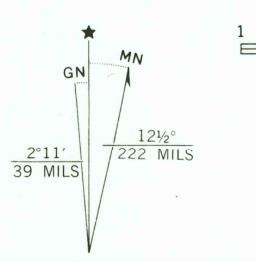
PLAZA NW QUADRANGLE
NORTH DAKOTA
7.5 MINUTE SERIES (TOPOGRAPHIC)

5680 IV SE
(TAGUS SE)



5680 IV SE
(TAGUS SE)

Mapped, edited, and published by the Geological Survey
Control by USGS and NOS/NOAA
Topography by photogrammetric methods from aerial photographs
taken 1973. Field checked 1976. Map edited 1981
Projection and 10,000-foot grid ticks: North Dakota coordinate
system, north zone (Lambert conformal conic)
1000-meter Universal Transverse Mercator grid, zone 14
1927 North American Datum
To place on the predicted North American Datum 1983
move the projection lines 4 meters north and
35 meters east as shown by dashed corner ticks
There may be private inholdings within the boundaries of
the National or State reservations shown on this map
Fine red dashed lines indicate selected fence and field lines where
generally visible on aerial photographs. This information is unchecked



ROAD CLASSIFICATION	
Primary highway, hard surface	Light-duty road, hard or improved surface
Secondary highway, hard surface	Unimproved road
Interstate Route	U. S. Route
	State Route

PLAZA NW, N. DAK.
N4807.5-W10152.5/7.5
1981
DMA 5680 III NW-SERIES V871

USGS
Historical File
National Mapping Div.

MAY 20 1981
1600