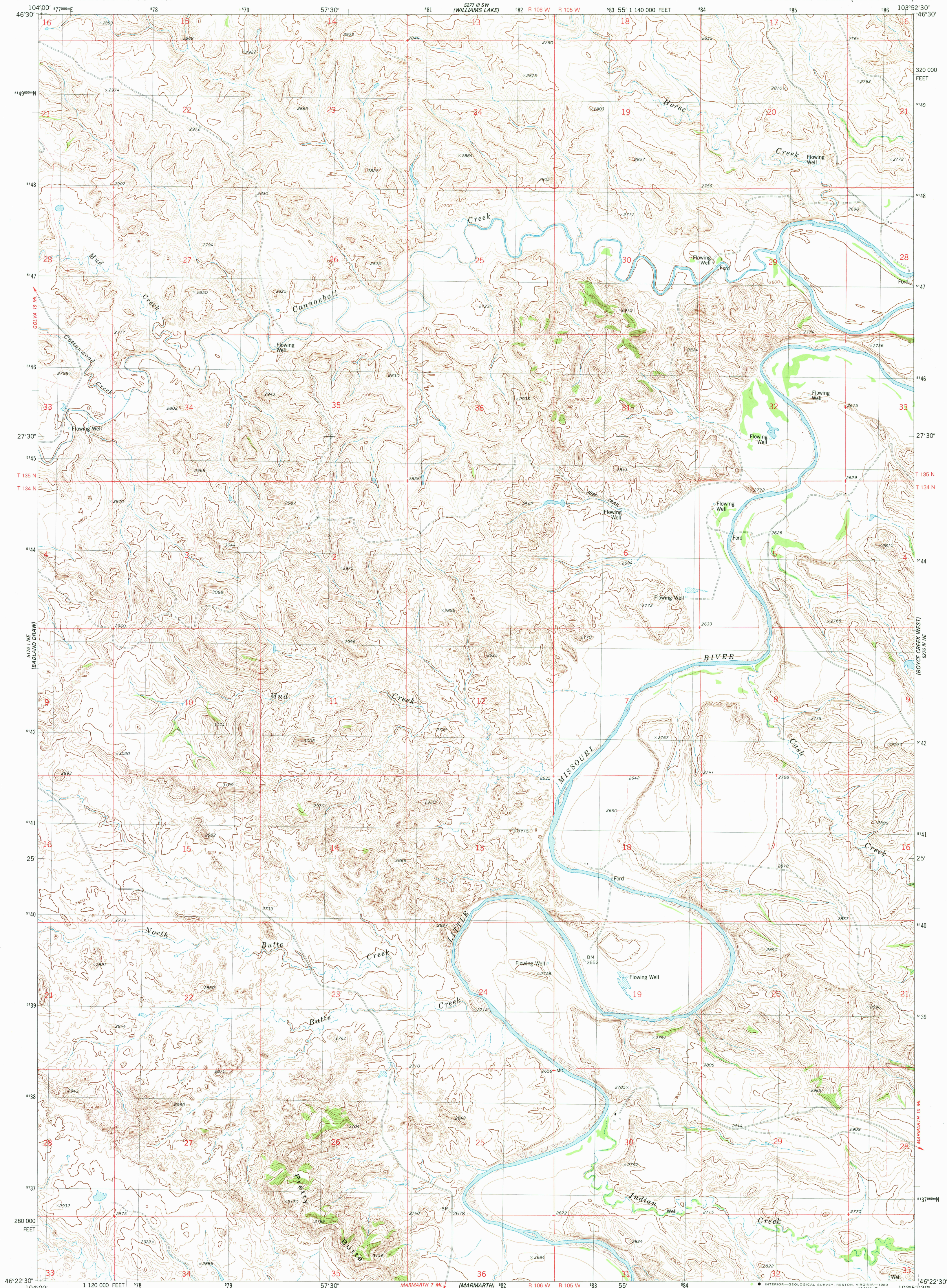
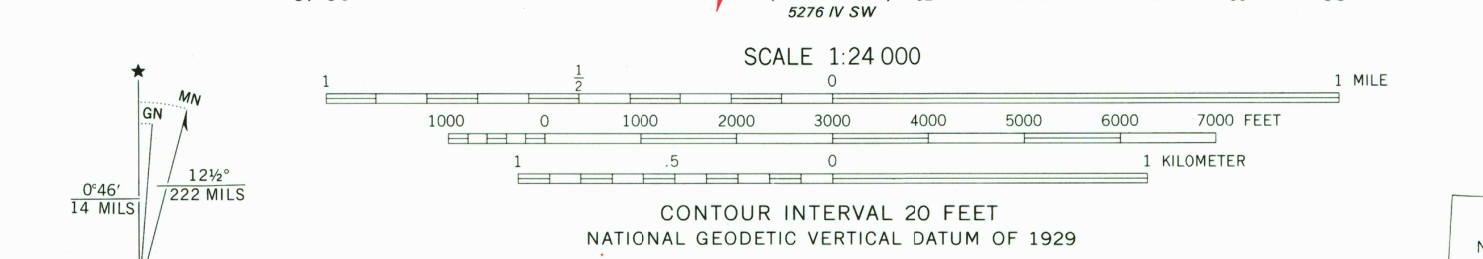


UNITED STATES
DEPARTMENT OF THE INTERIOR
GEOLOGICAL SURVEY

PRETTY BUTTE QUADRANGLE
NORTH DAKOTA—SLOPE CO.
7.5 MINUTE SERIES (TOPOGRAPHIC)



Mapped, edited, and published by the Geological Survey
Control by USGS and NOS/NOAA
Topography by photogrammetric methods from aerial photographs taken 1973. Field checked 1974. Map edited 1980
Projection and 10,000-foot grid ticks: North Dakota coordinate system, south zone (Lambert conformal conic) 1000-meter Universal Transverse Mercator grid, zone 13 1927 North American datum
To place on the predicted North American Datum 1983 move the projection lines 4 meters north and 39 meters east as shown by dashed corner ticks
Fine red dashed lines indicate selected fence lines



ROAD CLASSIFICATION
Primary highway, hard surface
Secondary highway, hard surface
Unimproved road
Interstate Route
U. S. Route
State Route
Light-duty road, hard or improved surface
U. S. Route
State Route

UTM GRID AND 1980 MAGNETIC NORTH DECLINATION AT CENTER OF SHEET
0°46' 14 MILS
1279' 222 MILS

THIS MAP COMPLIES WITH NATIONAL MAP ACCURACY STANDARDS
FOR SALE BY U. S. GEOLOGICAL SURVEY, DENVER, COLORADO 80225, OR RESTON, VIRGINIA 22092
AND BY THE STATE WATER COMMISSION, BISMARCK, NORTH DAKOTA 58501
A FOLDER DESCRIBING TOPOGRAPHIC MAPS AND SYMBOLS IS AVAILABLE ON REQUEST

USGS
Historical File
Topographic Division

PRETTY BUTTE, N. DAK.
N4622.5-W10352.5/7.5
1980
DMA 5276 IV NW-SERIES V871

OCT - 3 1980
2050