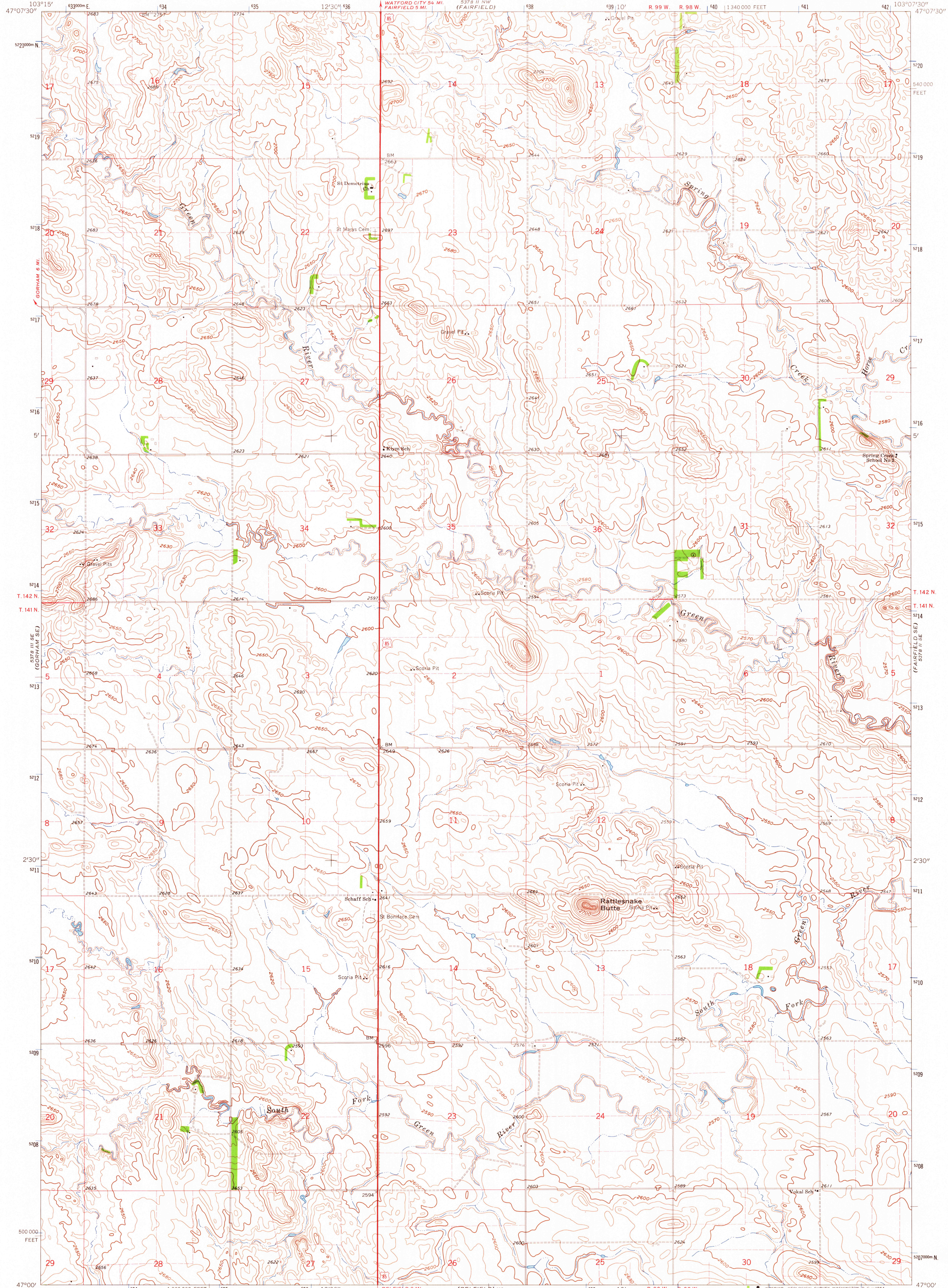


237 1/2 IN. (60.14 CM)

UNITED STATES  
DEPARTMENT OF THE INTERIOR  
GEOLOGICAL SURVEY

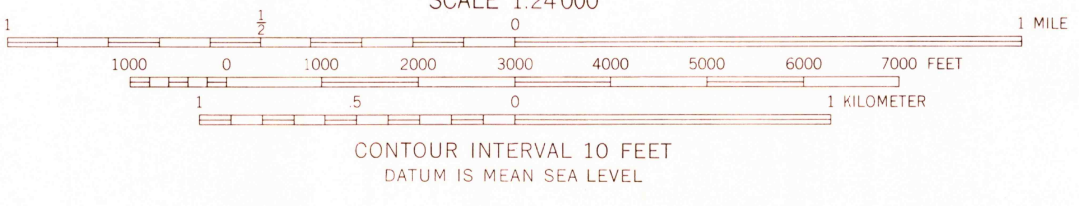
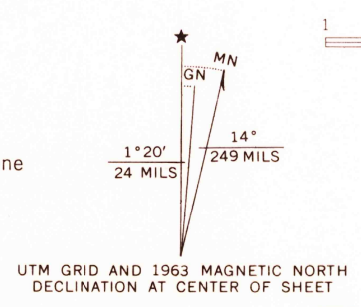
RATTLESNAKE BUTTE QUADRANGLE  
NORTH DAKOTA-BILLINGS CO.  
7.5 MINUTE SERIES (TOPOGRAPHIC)

537 1/2 IN. (13.69 CM)  
(HUNGRY MAN BUTTE)



FRYBARGER NE 2  
537 1/2 IN. (13.69 CM)

Mapped, edited, and published by the Geological Survey  
Control by USGS and USC&GS  
Topography by photogrammetric methods from aerial photographs taken 1961. Field checked 1963  
Polyconic projection. 1927 North American datum 10,000-foot grid based on North Dakota coordinate system, south zone 1000-meter Universal Transverse Mercator grid ticks, zone 13, shown in blue  
Fine red dashed lines indicate selected fence and field lines where generally visible on aerial photographs  
This information is unchecked



USGS  
Historical File  
Topographic Division

ROAD CLASSIFICATION  
Heavy-duty ——— Light-duty ———  
Unimproved dirt - - - - -  
U.S. Route



RATTLESNAKE BUTTE, N. DAK.  
N4700—W10307.5/7.5

FOR SALE BY U.S. GEOLOGICAL SURVEY, DENVER 25, COLORADO OR WASHINGTON 25, D. C.  
AND BY THE STATE WATER CONSERVATION COMMISSION, BISMARCK, NORTH DAKOTA  
A FOLDER DESCRIBING TOPOGRAPHIC MAPS AND SYMBOLS IS AVAILABLE ON REQUEST

1963  
AMS 5378 II SW—SERIES V871

AUG 12 1964

1840