

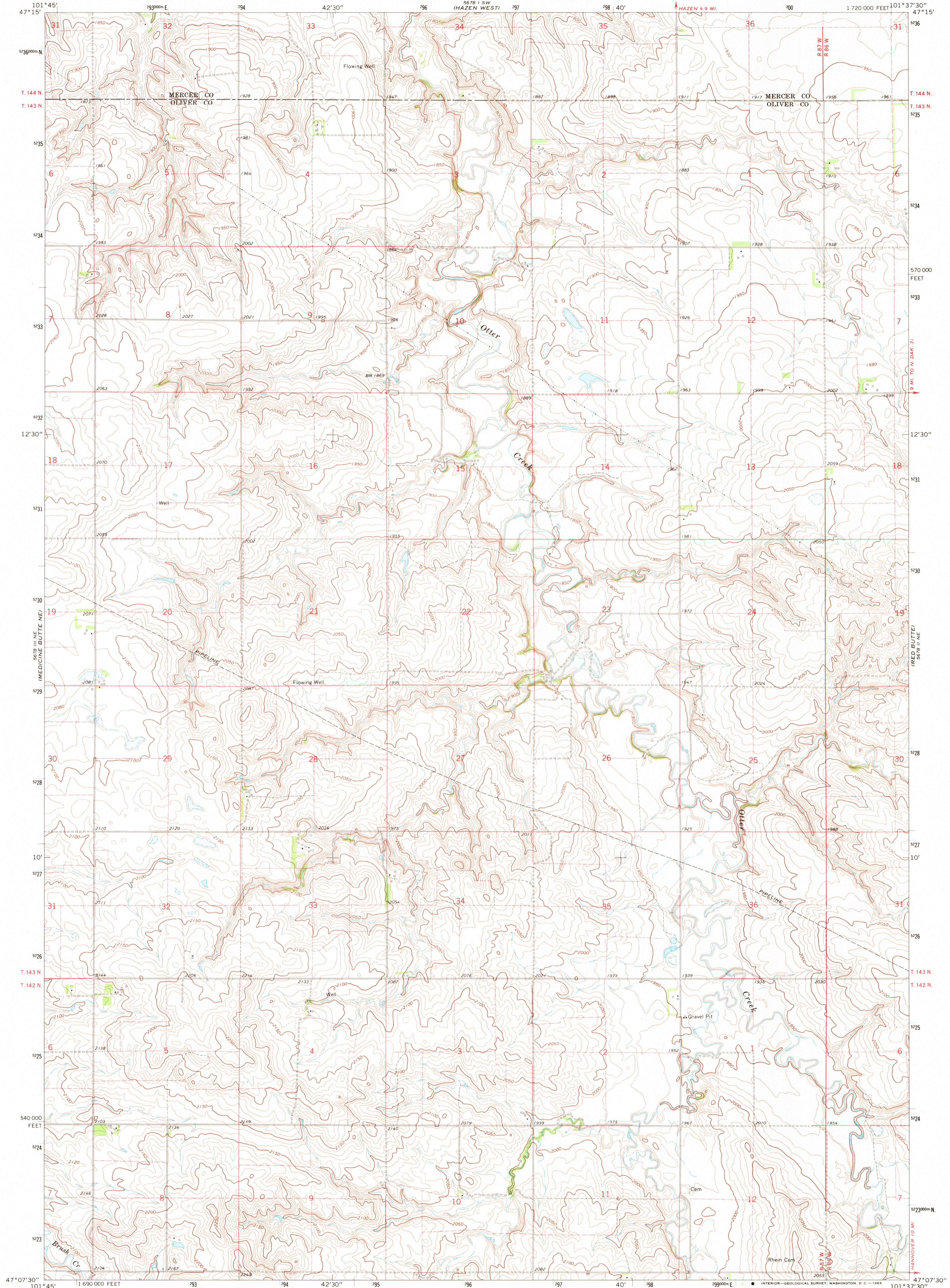
47°15' N
101°45' W

UNITED STATES
DEPARTMENT OF THE INTERIOR
GEOLOGICAL SURVEY

STATE OF NORTH DAKOTA
WATER COMMISSION
GOVERNOR WILLIAM L. GUY, CHAIRMAN
MILO W. HOISVEEN, SECRETARY AND CHIEF ENGINEER

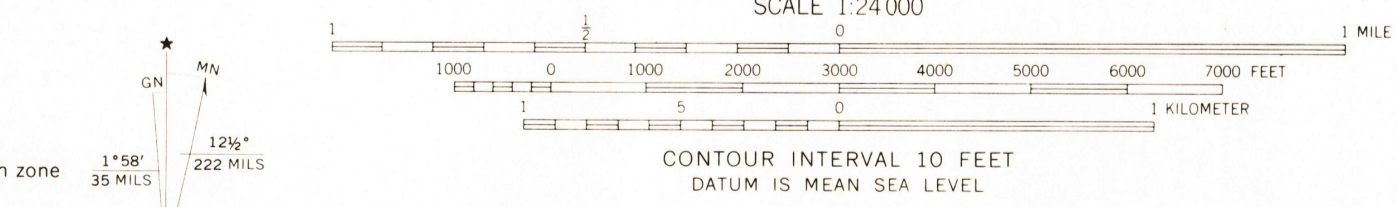
RED BUTTE NW QUADRANGLE
NORTH DAKOTA
7.5 MINUTE SERIES (TOPOGRAPHIC)

47°15' N
101°37'30" W



101°45' 1 690 000 FEET 293 42'30" 295 40' 298 40' 1 720 000 FEET 101°37'30"

Mapped, edited, and published by the Geological Survey
Control by USGS and USC&GS
Topography by photogrammetric methods from aerial
photographs taken 1967. Field checked 1968
Polyconic projection. 1927 North American datum
10,000-foot grid based on North Dakota coordinate system, south zone
100-meter Universal Transverse Mercator grid ticks,
zone 14, shown in blue
Fine red dashed lines indicate selected fence and field lines where
generally visible on aerial photographs
This information is unchecked



USGS
Historical File
Topographic Division
ROAD CLASSIFICATION
Light-duty ————— Unimproved dirt - - - - -



THIS MAP COMPLIES WITH NATIONAL MAP ACCURACY STANDARDS
FOR SALE BY U.S. GEOLOGICAL SURVEY, DENVER, COLORADO 80225, OR WASHINGTON, D. C. 20242
AND BY THE STATE WATER COMMISSION, BISMARCK, NORTH DAKOTA 58501
A FOLDER DESCRIBING TOPOGRAPHIC MAPS AND SYMBOLS IS AVAILABLE ON REQUEST

RED BUTTE NW, N. DAK.
N4707.5—W10137.5/7.5

1968
AMS 5678 II NW—SERIES Y871

2285
DEC 11 1969