

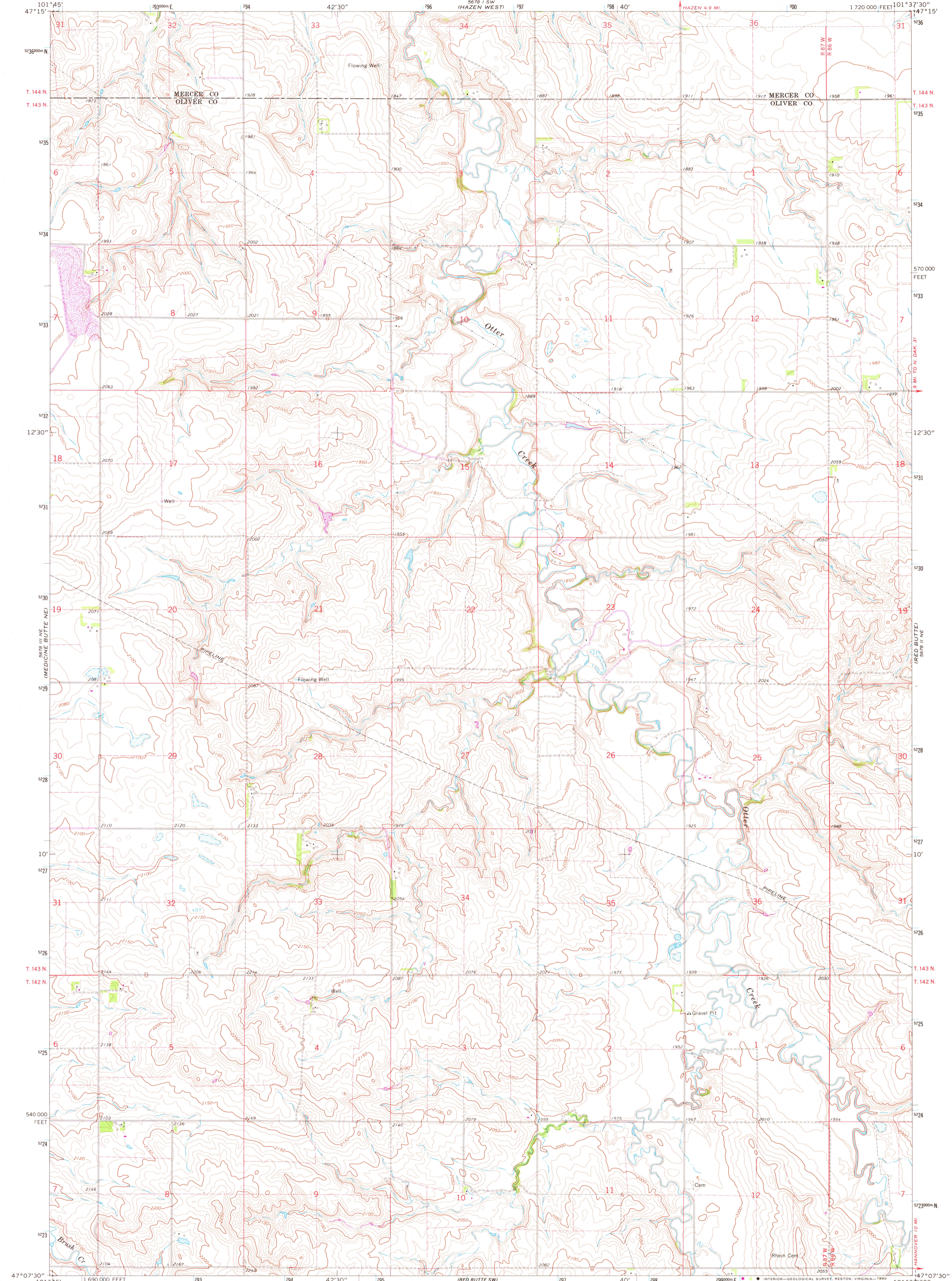
5671 1/4 SE  
6E/4L45

UNITED STATES  
DEPARTMENT OF THE INTERIOR  
GEOLOGICAL SURVEY

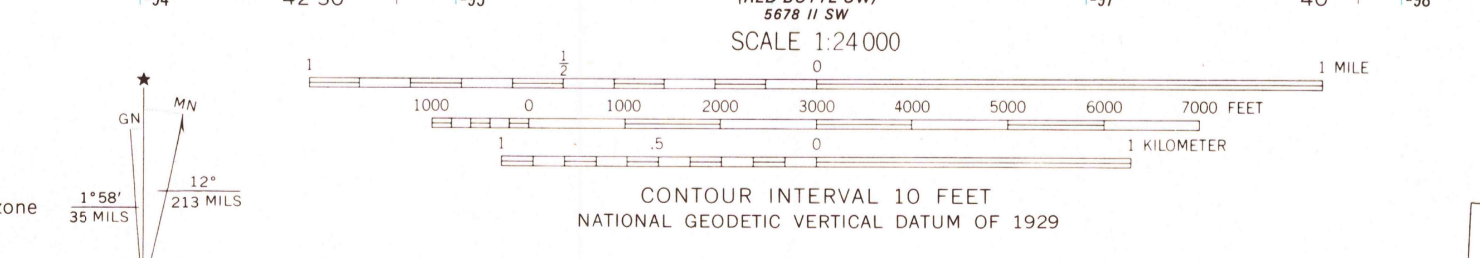
STATE OF NORTH DAKOTA  
WATER COMMISSION

RED BUTTE NW QUADRANGLE  
NORTH DAKOTA  
7.5 MINUTE SERIES (TOPOGRAPHIC)

5671 1/4 SE  
14E/4 E51



Mapped, edited, and published by the Geological Survey  
Control by USGS and USC&GS  
Topography by photogrammetric methods from aerial  
photographs taken 1967. Field checked 1968  
Polyconic projection  
10,000-foot grid based on North Dakota coordinate system, south zone  
1000-meter Universal Transverse Mercator grid ticks,  
zone 14, shown in blue. 1927 North American Datum  
To place on the predicted North American Datum 1983  
move the projection lines 5 meters north and  
35 meters east as shown by dashed corner ticks  
Fine red dashed lines indicate selected fence and field lines where  
generally visible on aerial photographs. This information is unchecked  
Revisions shown in purple and woodland compiled from  
aerial photographs taken 1977 and other source data  
This information not field checked. Map edited 1980



ROAD CLASSIFICATION

Primary highway, all weather, hard surface	Light-duty road, all weather, improved surface
Secondary highway, all weather, hard surface	Unimproved road, fair or dry weather
Interstate Route	U. S. Route
	State Route

USGS  
Historical File  
Topographic Division  
RED BUTTE NW, N. DAK.  
N4707.5—W10137.5/7.5  
1968  
PHOTOREVISED 1980  
DMA 5678 II NW—SERIES V871

DEC 16 1980  
2000