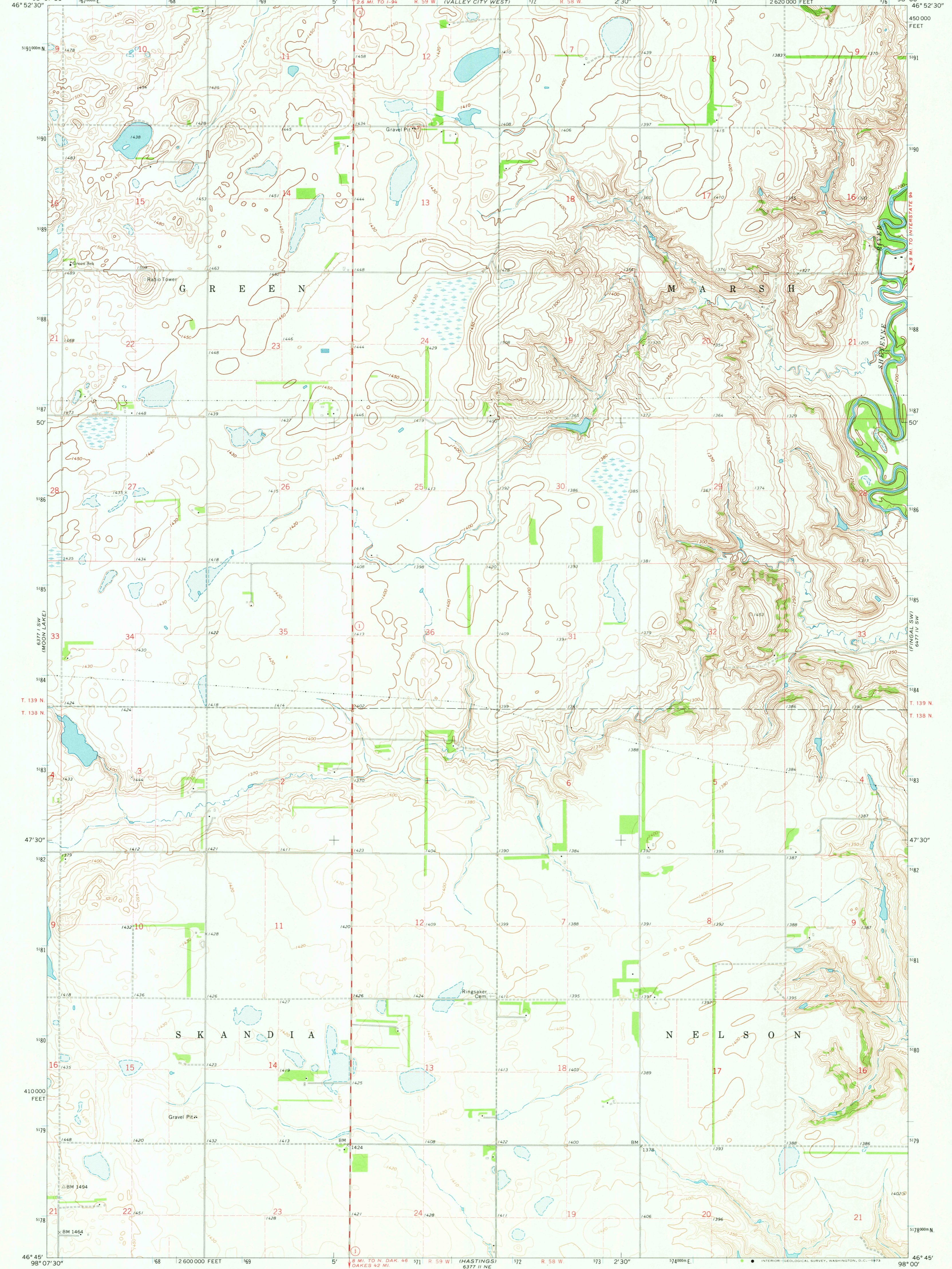


6377 I SW  
(MOON LAKE)

UNITED STATES  
DEPARTMENT OF THE INTERIOR  
GEOLOGICAL SURVEY

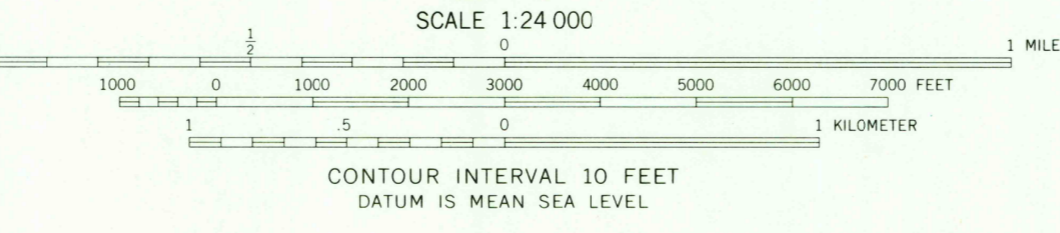
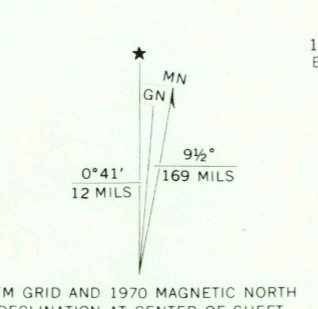
SANBORN SE QUADRANGLE  
NORTH DAKOTA—BARNES CO.  
7.5 MINUTE SERIES (TOPOGRAPHIC)

6377 I NW  
(VALLEY CITY EAST)



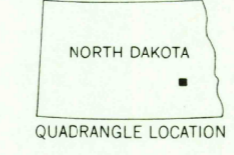
6377 I SW  
(MOON LAKE)

Mapped, edited, and published by the Geological Survey  
Control by USGS and USC&GS  
Topography by photogrammetric methods from aerial  
photographs taken 1969. Field checked 1970  
Polyconic projection. 1927 North American datum  
10,000-foot grid based on North Dakota coordinate system,  
south zone  
1000-meter Universal Transverse Mercator grid ticks,  
zone 14, shown in blue  
Fine red dashed lines indicate selected fence and field lines  
where generally visible on aerial photographs  
This information is unchecked



ROAD CLASSIFICATION

Primary highway, hard surface	Light-duty road, hard or improved surface
Secondary highway, hard surface	Unimproved road
Interstate Route	U. S. Route
	State Route



THIS MAP COMPLIES WITH NATIONAL MAP ACCURACY STANDARDS  
FOR SALE BY U. S. GEOLOGICAL SURVEY, DENVER, COLORADO 80225, OR WASHINGTON, D. C. 20242  
AND BY THE STATE WATER COMMISSION, BISMARCK, NORTH DAKOTA 58501  
A FOLDER DESCRIBING TOPOGRAPHIC MAPS AND SYMBOLS IS AVAILABLE ON REQUEST

SANBORN SE, N. DAK.  
N4645—W9800/7.5

1970

AMS 6377 I SE—SERIES V871

FEB 21 1973

USGS  
HISTORICAL FILE  
TOPOGRAPHIC DIVISION

2125