

89° 15' W
(Geometric East)

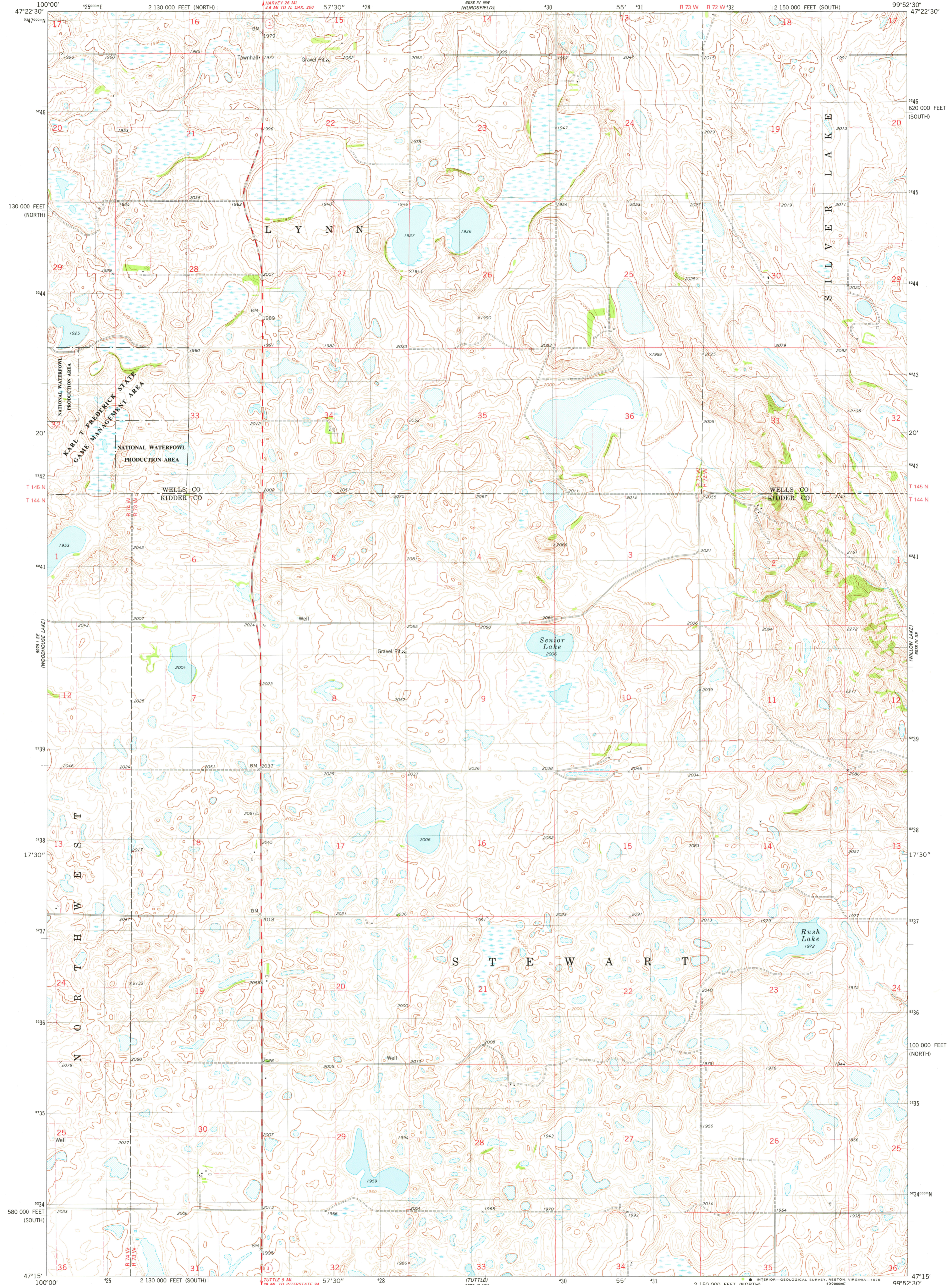
UNITED STATES
DEPARTMENT OF THE INTERIOR
GEOLOGICAL SURVEY



STATE OF NORTH DAKOTA
WATER COMMISSION

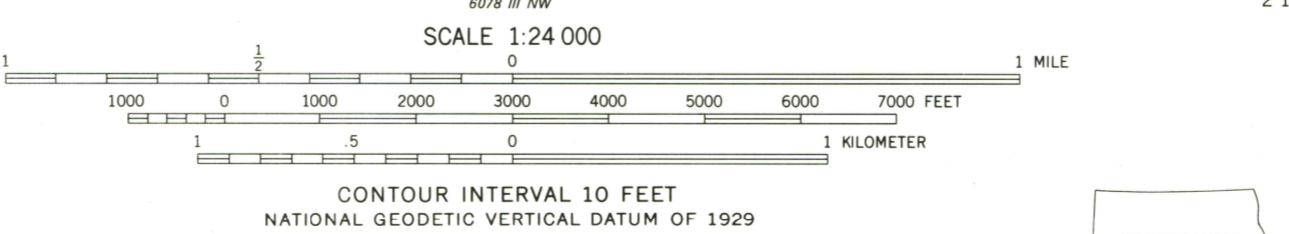
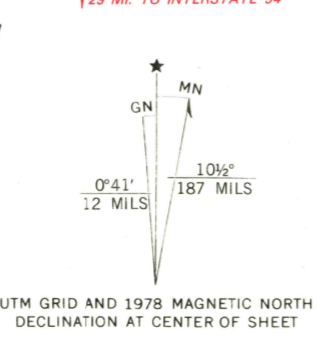
SENIOR LAKE QUADRANGLE
NORTH DAKOTA
7.5 MINUTE SERIES (TOPOGRAPHIC)

89° 15' W
(Geometric)



LAKE HELVY
808 W 1/2 SE

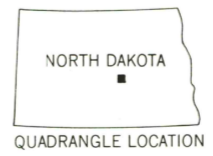
Mapped, edited, and published by the Geological Survey in cooperation with the North Dakota Water Commission Control by USGS and NOS/NOAA
Topography by photogrammetric methods from aerial photographs taken 1976. Field checked 1977. Map edited 1978
Projection: North Dakota coordinate system, south zone (Lambert conformal conic)
10,000-foot grid ticks based on North Dakota coordinate system, south and north zones
1000-meter Universal Transverse Mercator grid, zone 14 1927 North American datum
Fine red dashed lines indicate selected fence and field lines where generally visible on aerial photographs
This information is unchecked
There may be private inholdings within the boundaries of the National or State reservations shown on this map



ROAD CLASSIFICATION

Primary highway, hard surface	Light-duty road, hard or improved surface
Secondary highway, hard surface	Unimproved road

○ Interstate Route □ U. S. Route ○ State Route



THIS MAP COMPLIES WITH NATIONAL MAP ACCURACY STANDARDS FOR SALE BY U. S. GEOLOGICAL SURVEY, DENVER, COLORADO 80225, OR RESTON, VIRGINIA 22092 AND STATE WATER COMMISSION, BISMARCK, NORTH DAKOTA 58501
A FOLDER DESCRIBING TOPOGRAPHIC MAPS AND SYMBOLS IS AVAILABLE ON REQUEST

SENIOR LAKE, N. DAK.
N4715-W9952.5/7.5

1978

AMS 6078 IV SW-SERIES V871