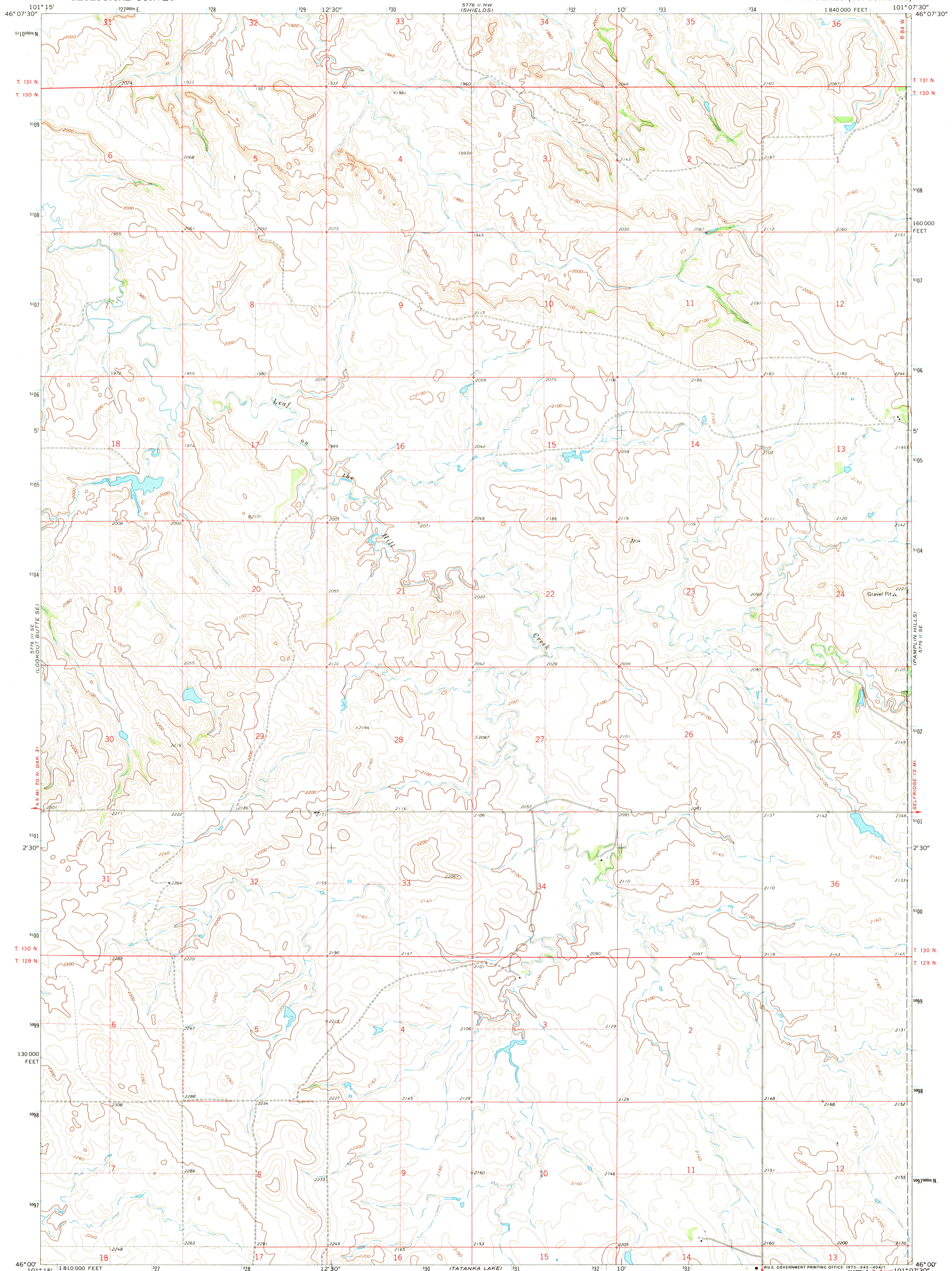
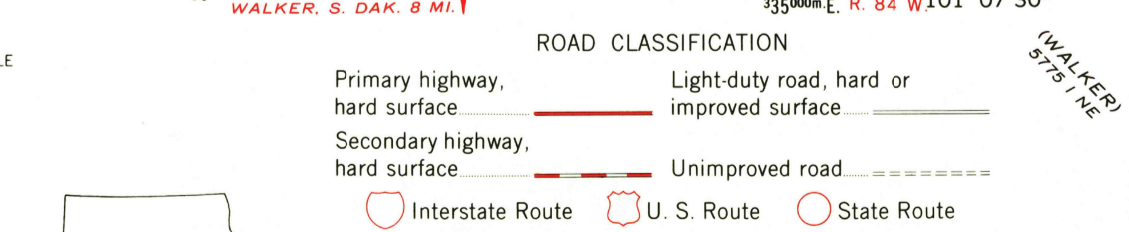
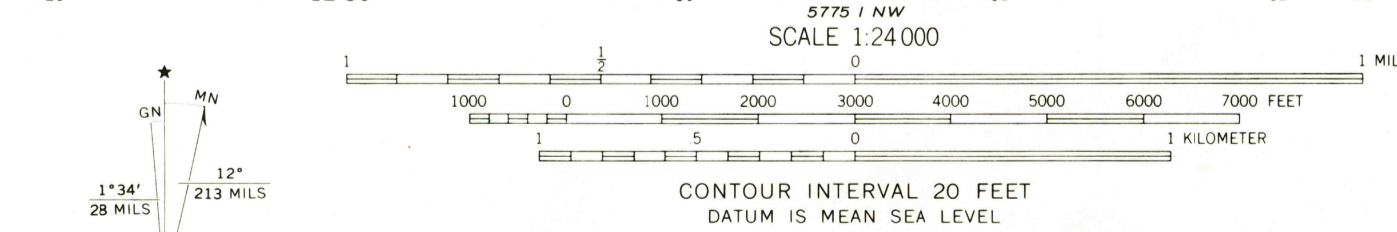


UNITED STATES
DEPARTMENT OF THE INTERIOR
GEOLOGICAL SURVEY

SHIELDS SW QUADRANGLE
NORTH DAKOTA—SIOUX CO.
7.5 MINUTE SERIES (TOPOGRAPHIC)



Mapped, edited, and published by the Geological Survey as part of the Department of the Interior program for the development of the Missouri River Basin Control by USGS and USC&GS
Topography by photogrammetric methods from aerial photographs taken 1970. Field checked 1971
Projection and 10,000-foot grid ticks: North Dakota coordinate system, south zone (Lambert conformal conic)
1000-meter Universal Transverse Mercator grid ticks, zone 14, shown in blue. 1927 North American datum
Entire area lies within the Standing Rock Indian Reservation
Fine red dashed lines indicate selected fence and field lines where generally visible on aerial photographs
This information is unchecked



THIS MAP COMPLIES WITH NATIONAL MAP ACCURACY STANDARDS FOR SALE BY U. S. GEOLOGICAL SURVEY, DENVER, COLORADO 80225 OR WASHINGTON, D. C. 20242 AND BY THE STATE WATER COMMISSION, BISMARCK, NORTH DAKOTA 58501 A FOLDER DESCRIBING TOPOGRAPHIC MAPS AND SYMBOLS IS AVAILABLE ON REQUEST

USGS
HISTORICAL FILE
TOPOGRAPHIC DIVISION

SHIELDS SW, N. DAK.
N4600—W10107.5/7.5

1971
AMS 5776 II SW—SERIES W871

NOV 9 1973
Horn
2500
50 plane