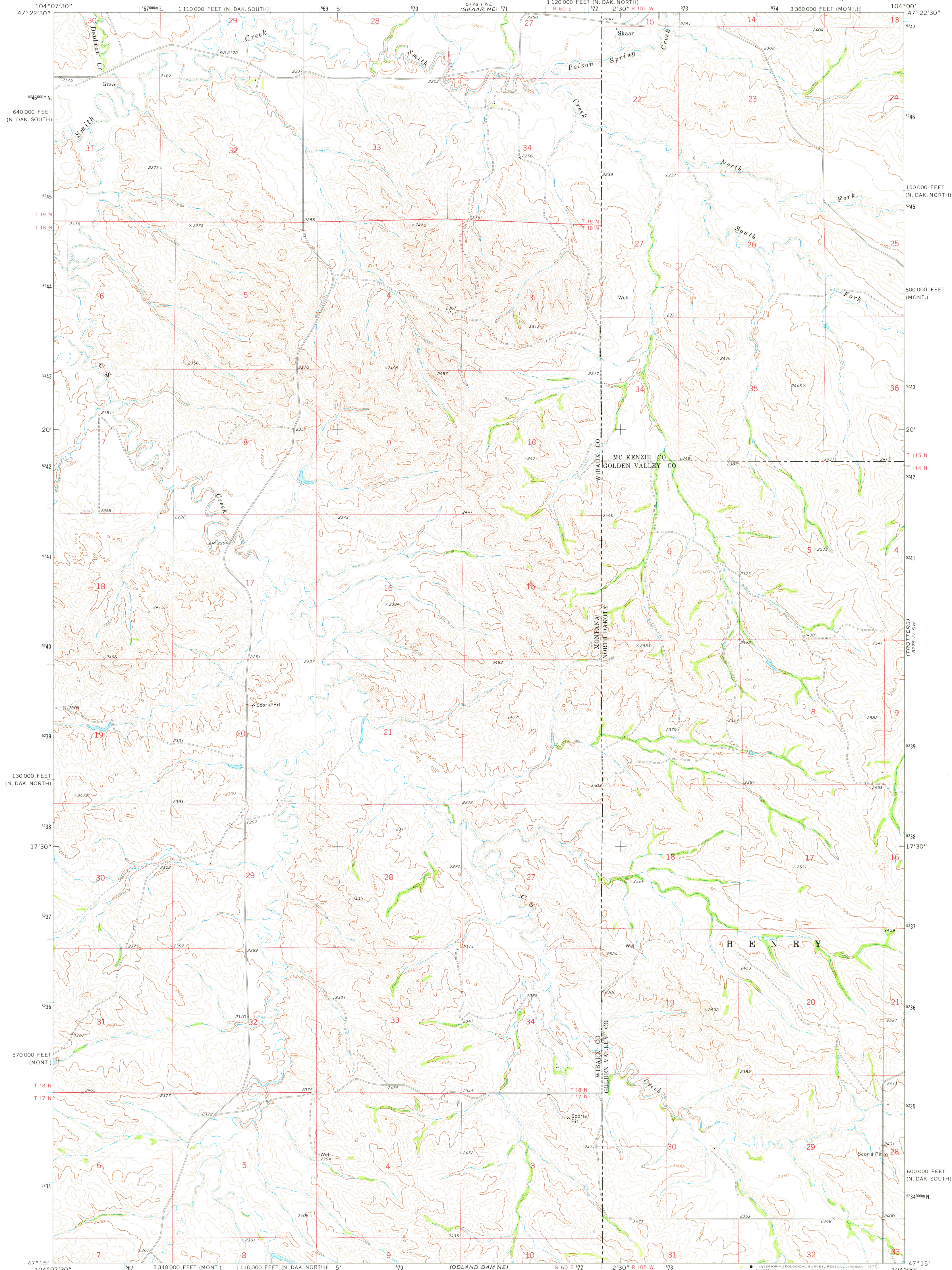


5178 I NW
(SKAAR NW)

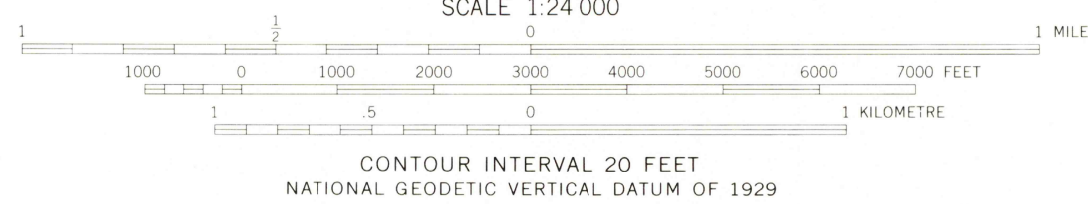
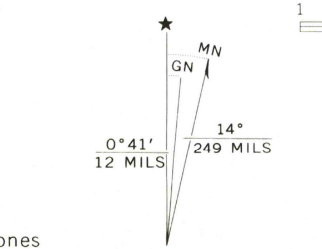
UNITED STATES
DEPARTMENT OF THE INTERIOR
GEOLOGICAL SURVEY

SKAAR QUADRANGLE
NORTH DAKOTA—MONTANA
7.5 MINUTE SERIES (TOPOGRAPHIC)

5278 I NW
(SQUAW GAP)



Mapped, edited, and published by the Geological Survey
in cooperation with the North Dakota Water Commission
Control by USGS and NOS/NOAA
Topography by photogrammetric methods from aerial
photographs taken 1973. Field checked 1974
Projection: Montana coordinate system, central zone
(Lambert conformal conic)
10,000-foot grid ticks based on Montana coordinate system,
central zone and North Dakota coordinate system, south and north zones
1000-metre Universal Transverse Mercator grid ticks,
zone 13, shown in blue. 1927 North American datum
Fine red dashed lines indicate selected fence and field lines where
generally visible on aerial photographs
This information is unchecked



ROAD CLASSIFICATION
Primary highway, hard surface
Secondary highway, hard surface
Light-duty road, hard or improved surface
Unimproved road
Interstate Route
U. S. Route
State Route



THIS MAP COMPLIES WITH NATIONAL MAP ACCURACY STANDARDS
FOR SALE BY U. S. GEOLOGICAL SURVEY, DENVER, COLORADO 80226 OR RESTON, VIRGINIA 22092
AND BY THE STATE WATER COMMISSION, BISMARCK, NORTH DAKOTA 58501
A FOLDER DESCRIBING TOPOGRAPHIC MAPS AND SYMBOLS IS AVAILABLE ON REQUEST

USGS
Historical File
Topographic Division

SKAAR, N. DAK.—MONT.
N4715—W10400/7.5

1974

AMS 5178 I SE—SERIES V894

APR 13 1977

2800