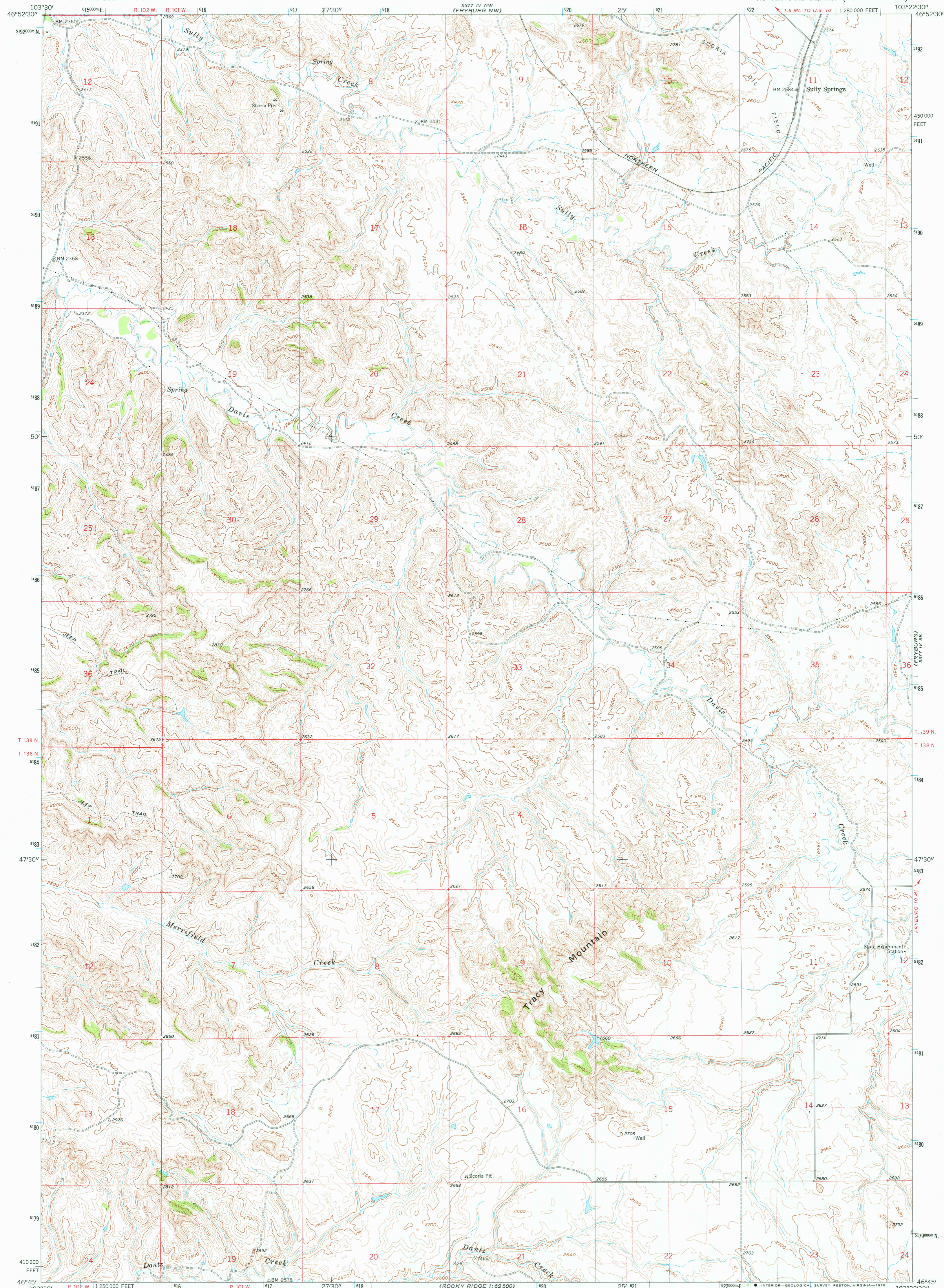


8221 NE
162000A

UNITED STATES
DEPARTMENT OF THE INTERIOR
GEOLOGICAL SURVEY

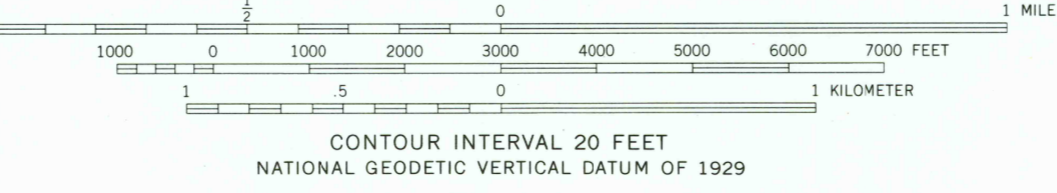
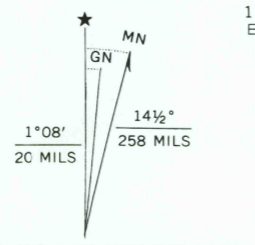
TRACY MOUNTAIN QUADRANGLE
NORTH DAKOTA - BILLINGS CO.
7.5 MINUTE SERIES (TOPOGRAPHIC)

8271 NE
162000 NE

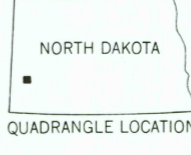


Mapped, edited, and published by the Geological Survey

Control by USGS and USC&GS
 Topography by photogrammetric methods from aerial photographs taken 1960. Field checked 1962
 Polyconic projection, 1927 North American datum
 10,000-foot grid based on North Dakota coordinate system, south zone
 1000-meter Universal Transverse Mercator grid ticks, zone 13, shown in blue
 Fine red dashed lines indicate selected fence and field lines where generally visible on aerial photographs
 This information is unchecked



ROAD CLASSIFICATION
 Light-duty ——— Unimproved dirt - - - - -



FEB 16 1978

THIS MAP COMPLIES WITH NATIONAL MAP ACCURACY STANDARDS
 FOR SALE BY U. S. GEOLOGICAL SURVEY, DENVER, COLORADO 80225, OR RESTON, VIRGINIA 22092
 AND STATE WATER COMMISSION, BISMARCK, NORTH DAKOTA 58501
 A FOLDER DESCRIBING TOPOGRAPHIC MAPS AND SYMBOLS IS AVAILABLE ON REQUEST

USGS
HISTORICAL FILE
TOPOGRAPHIC DIVISION

TRACY MOUNTAIN, N. DAK.
 N4645-W10322.5/7.5
 1962
 AMS 5377 IV SW - SERIES V871

1800