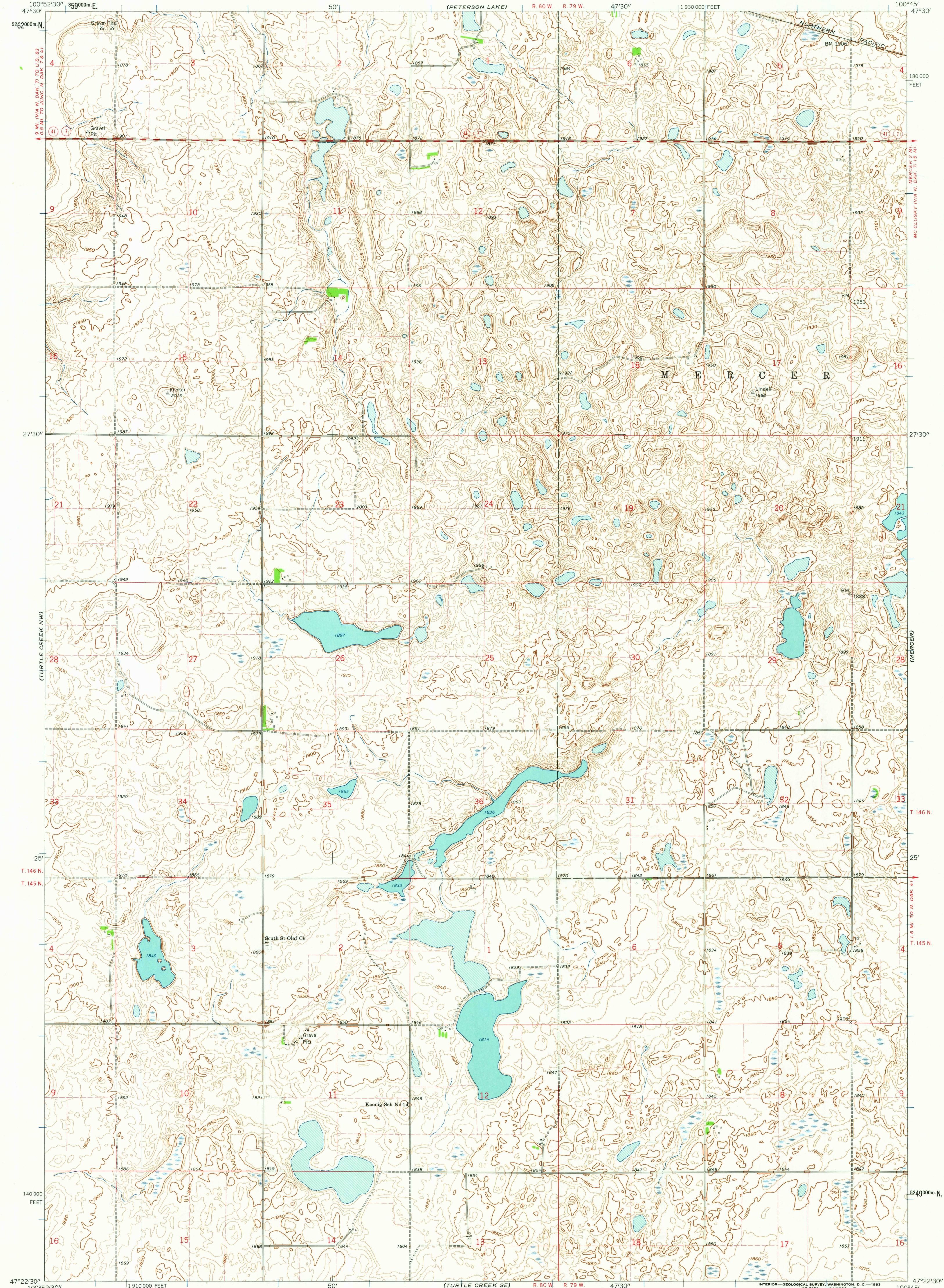
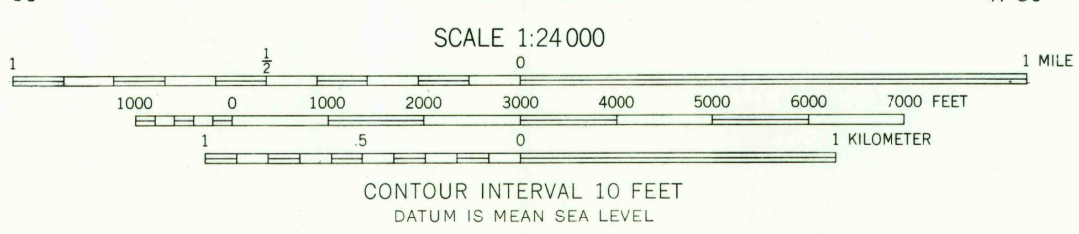
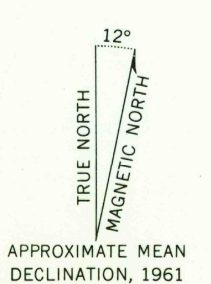


UNITED STATES  
DEPARTMENT OF THE INTERIOR  
GEOLOGICAL SURVEY

TURTLE CREEK NE QUADRANGLE  
NORTH DAKOTA—MC LEAN CO.  
7.5 MINUTE SERIES (TOPOGRAPHIC)  
NE 1/4 TURTLE CREEK 15' QUADRANGLE



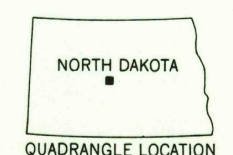
Mapped, edited, and published by the Geological Survey as part of the Department of the Interior program for the development of the Missouri River Basin Control by USGS and USC&GS  
Topography by photogrammetric methods from aerial photographs taken 1958. Field checked 1961  
Polyconic projection. 1927 North American datum 10,000-foot grid based on North Dakota coordinate system, north zone 1000-meter Universal Transverse Mercator grid ticks, zone 14, shown in blue  
Fine red dashed lines indicate selected fence and field lines where generally visible on aerial photographs. This information is unchecked



USGS  
Historical File  
Topographic Division

ROAD CLASSIFICATION

Medium-duty	Light-duty
Unimproved dirt	State Route



TURTLE CREEK NE, N. DAK.  
NE 1/4 TURTLE CREEK 15' QUADRANGLE  
N 4722.5—W 10045/7.5

THIS MAP COMPLIES WITH NATIONAL MAP ACCURACY STANDARDS  
FOR SALE BY U. S. GEOLOGICAL SURVEY, DENVER 25, COLORADO OR WASHINGTON 25, D. C.  
AND BY THE STATE WATER CONSERVATION COMMISSION, BISMARCK, NORTH DAKOTA  
A FOLDER DESCRIBING TOPOGRAPHIC MAPS AND SYMBOLS IS AVAILABLE ON REQUEST

1961

2090

001 2 55563