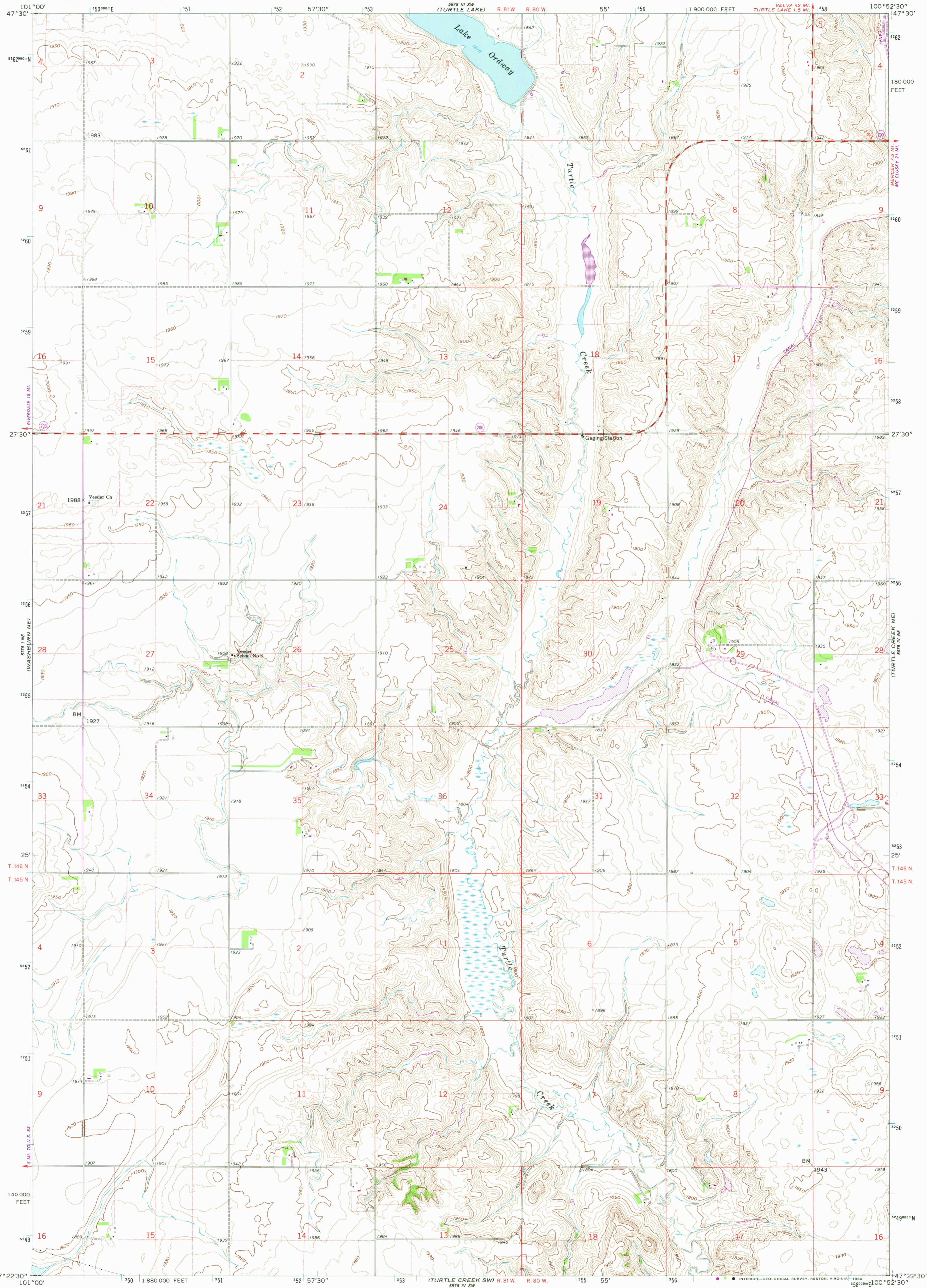
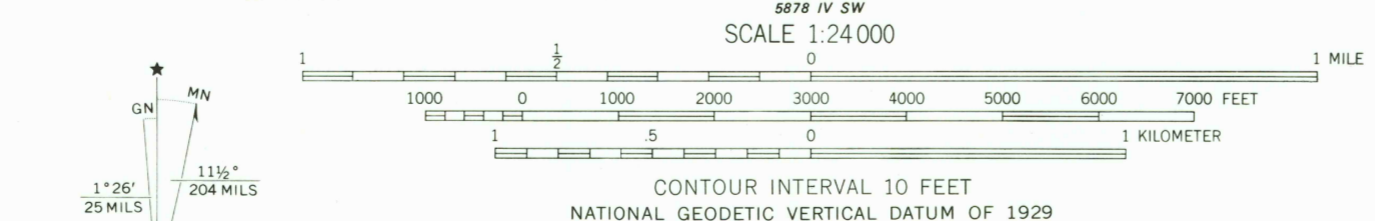


UNITED STATES
DEPARTMENT OF THE INTERIOR
GEOLOGICAL SURVEY

TURTLE CREEK NW QUADRANGLE
NORTH DAKOTA—MC LEAN CO.
7.5 MINUTE SERIES (TOPOGRAPHIC)
NW 1/4 TURTLE CREEK 15' QUADRANGLE



Mapped, edited, and published by the Geological Survey as part of the Department of the Interior program for the development of the Missouri River Basin Control by USGS and USC&GS
Topography by photogrammetric methods from aerial photographs taken 1958. Field checked 1961
Polyconic projection
10,000-foot grid based on North Dakota coordinate system, north zone
1000-meter Universal Transverse Mercator grid ticks, zone 14, shown in blue. 1927 North American Datum
To place on the predicted North American Datum 1983 move the projection lines 4 meters north and 34 meters east as shown by dashed corner ticks
Fine red dashed lines indicate selected fence and field lines where generally visible on aerial photographs. This information is unchecked



ROAD CLASSIFICATION

Primary highway, all weather, hard surface	Light-duty road, all weather, improved surface
Secondary highway, all weather, hard surface	Unimproved road, fair or dry weather
Interstate Route	U.S. Route
	State Route



TURTLE CREEK NW, N. DAK.
NW 1/4 TURTLE CREEK 15' QUADRANGLE
N4722.5—W10052.5/7.5

Revisions shown in purple and woodland compiled from aerial photographs taken 1977 and other source data. This information not field checked. Map edited 1980
1961
PHOTOREVISED 1980
DMA 5878 IV NW-SERIES V871

USGS
Historical File
Topographic Division
NOV 17 1980