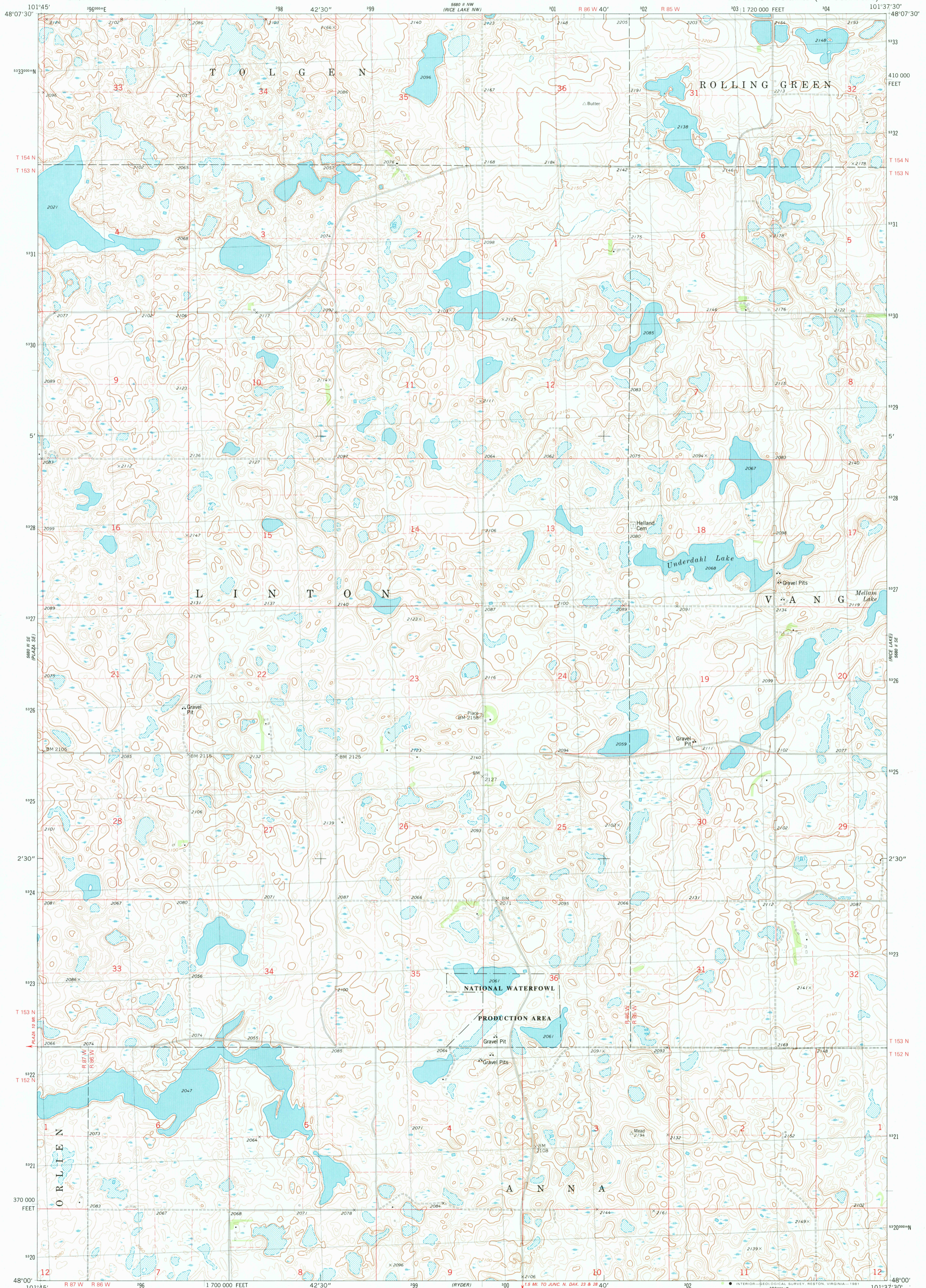


5880 II NW
(RICE LAKE NW)

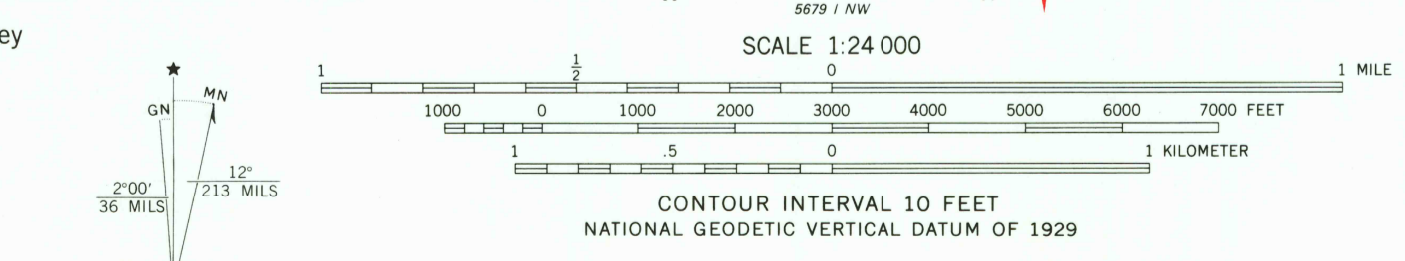
UNITED STATES
DEPARTMENT OF THE INTERIOR
GEOLOGICAL SURVEY

UNDERDAHL LAKE QUADRANGLE
NORTH DAKOTA—WARD CO.
7.5 MINUTE SERIES (TOPOGRAPHIC)

5880 II NE
(MONK LAKE NE)



Mapped, edited, and published by the Geological Survey
Control by USGS and NOS/NOAA
Topography by photogrammetric methods from aerial photographs taken 1973. Field checked 1976. Map edited 1980
Projection and 10,000-foot grid ticks: North Dakota coordinate system, north zone (Lambert conformal conic)
1000-meter Universal Transverse Mercator grid, zone 14
1927 North American Datum
To place on the predicted North American Datum 1983 move the projection lines 4 meters north and 35 meters east as shown by dashed corner ticks
There may be private inholdings within the boundaries of the National or State reservations shown on this map
Fine red dashed lines indicate selected fence and field lines where generally visible on aerial photographs
This information is unchecked



ROAD CLASSIFICATION

Primary highway, hard surface	Light-duty road, hard or improved surface
Secondary highway, hard surface	Unimproved road

○ Interstate Route ○ U. S. Route ○ State Route

HISTORICAL FILE
NATIONAL MAPPING DIVISION

QUADRANGLE LOCATION
NORTH DAKOTA

UNDERDAHL LAKE, N. DAK.
N4800-W10137.5/7.5

1980
DMA 5880 II SW—SERIES V871

JUN 3 1981
1950