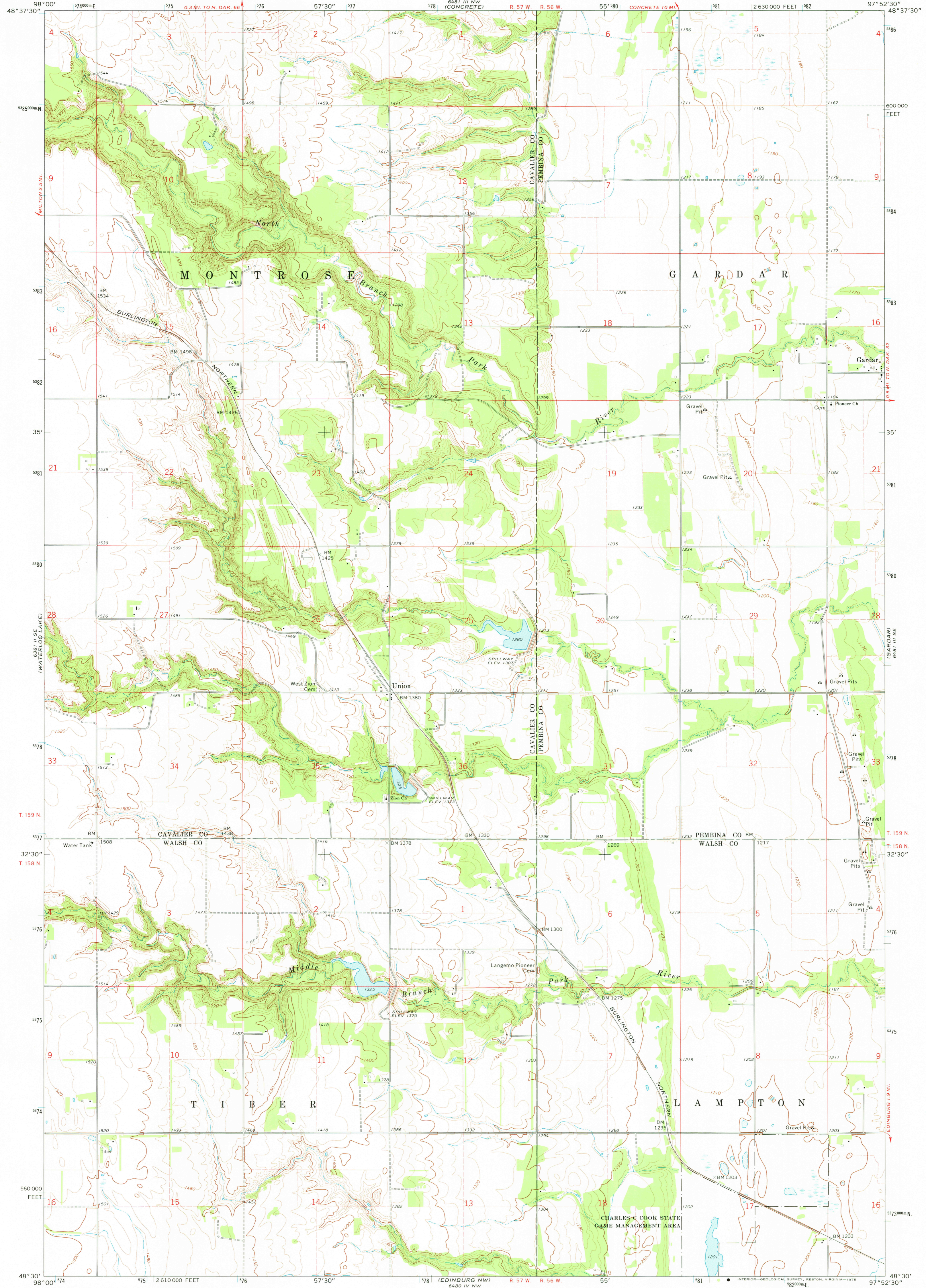
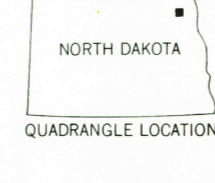
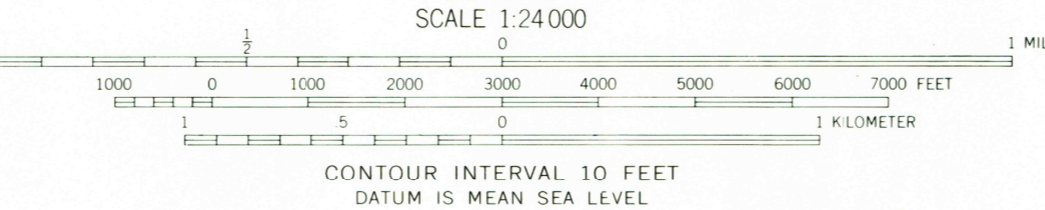
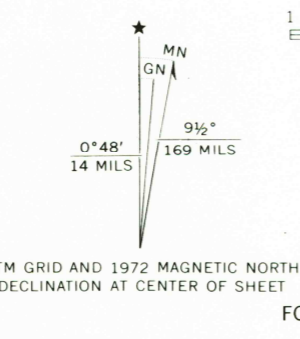


AMS 6481 III SW
6881 I SW

AMS 6481 III SW
6881 I SW



Mapped, edited, and published by the Geological Survey
Control by USGS and USC&GS
Topography by photogrammetric methods from aerial
photographs taken 1970. Field checked 1972
Projection and 10,000-foot grid ticks: North Dakota coordinate
system, north zone (Lambert conformal cone)
1000-meter Universal Transverse Mercator grid ticks,
zone 14, shown in blue. 1927 North American datum
Fine red dashed lines indicate selected fence and field lines
where generally visible on aerial photographs
This information is unchecked



ROAD CLASSIFICATION
Primary highway, hard surface ——— Light duty road, hard or improved surface ———
Secondary highway, hard surface ——— Unimproved road ———
Interstate Route ——— U.S. Route ——— State Route ———

CONTOUR INTERVAL 10 FEET
DATUM IS MEAN SEA LEVEL

UTM GRID AND 1972 MAGNETIC NORTH DECLINATION AT CENTER OF SHEET

USGS
Historical File
Topographic Division

UNION, N. DAK.
N4830—W9752.5/7.5
1972
AMS 6481 III SW—SERIES V871

FEB 14 1975