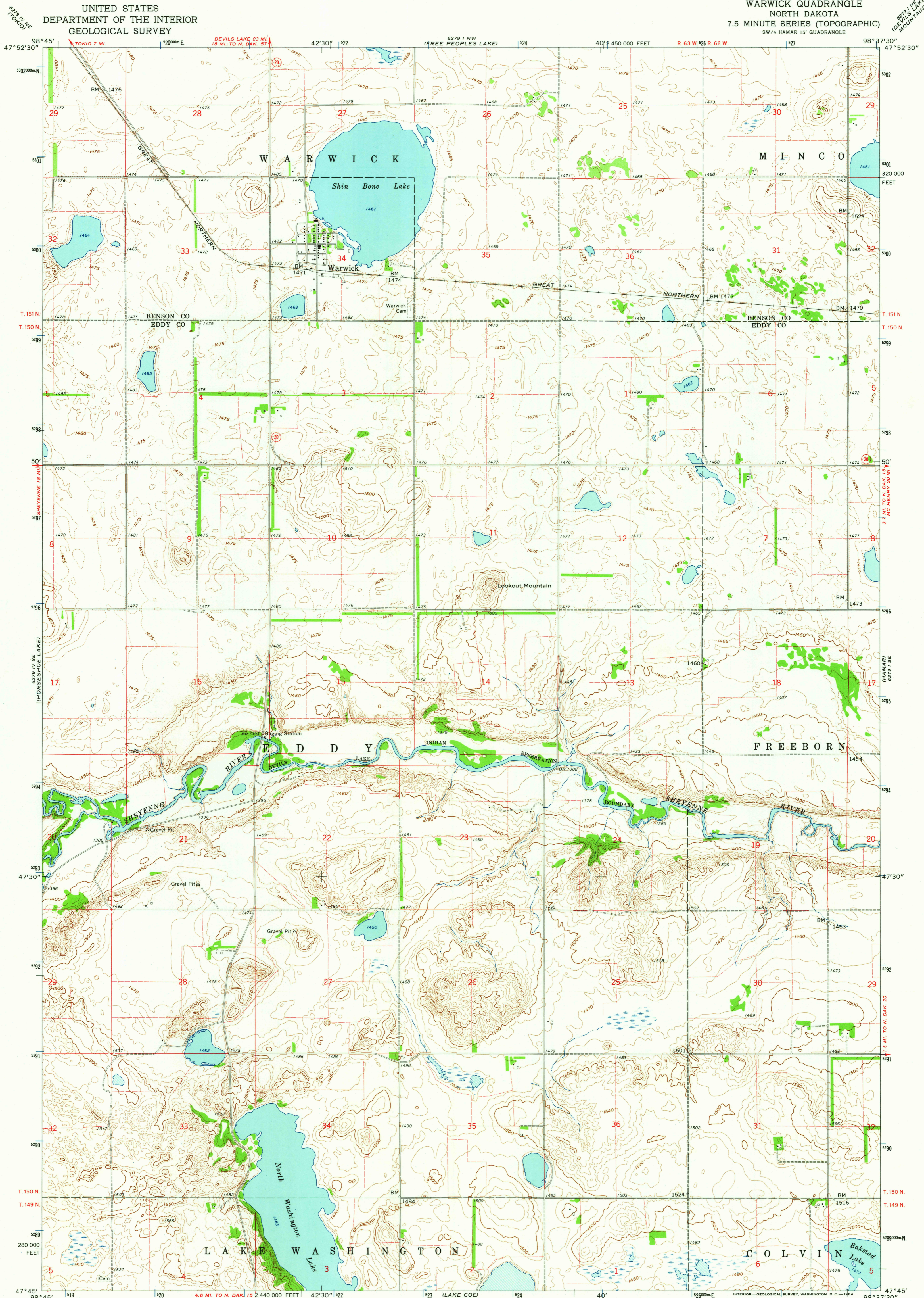
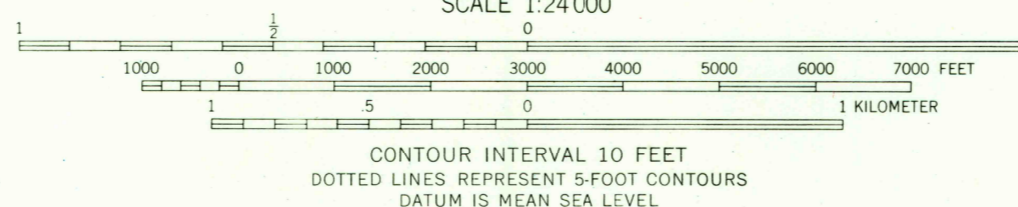


UNITED STATES
DEPARTMENT OF THE INTERIOR
GEOLOGICAL SURVEY

WARWICK QUADRANGLE
NORTH DAKOTA
7.5 MINUTE SERIES (TOPOGRAPHIC)
SW 1/4 HAMAR 15' QUADRANGLE



Mapped, edited, and published by the Geological Survey as part of the Department of the Interior program for the development of the Missouri River Basin Control by USGS and USC&GS
Topography by photogrammetric methods from aerial photographs taken 1958 and planetable surveys 1962
Polyconic projection. 1927 North American datum 10,000-foot grid based on North Dakota coordinate system, north zone 1300-meter Universal Transverse Mercator grid ticks, zone 14, shown in blue
Fine red dashed lines indicate selected fence and field lines where generally visible on aerial photographs. This information is unchecked



CONTOUR INTERVAL 10 FEET
DOTTED LINES REPRESENT 5-FOOT CONTOURS
DATUM IS MEAN SEA LEVEL

USGS
Historical File
Topographic Division

ROAD CLASSIFICATION
Light-duty ——— Unimproved dirt
○ State Route



WARWICK, N. DAK.
SW 1/4 HAMAR 15' QUADRANGLE
N4745-W9837.5/7.5
1962

AMS 6279 1 SW—SERIES W871

FEB 19 1964

2545