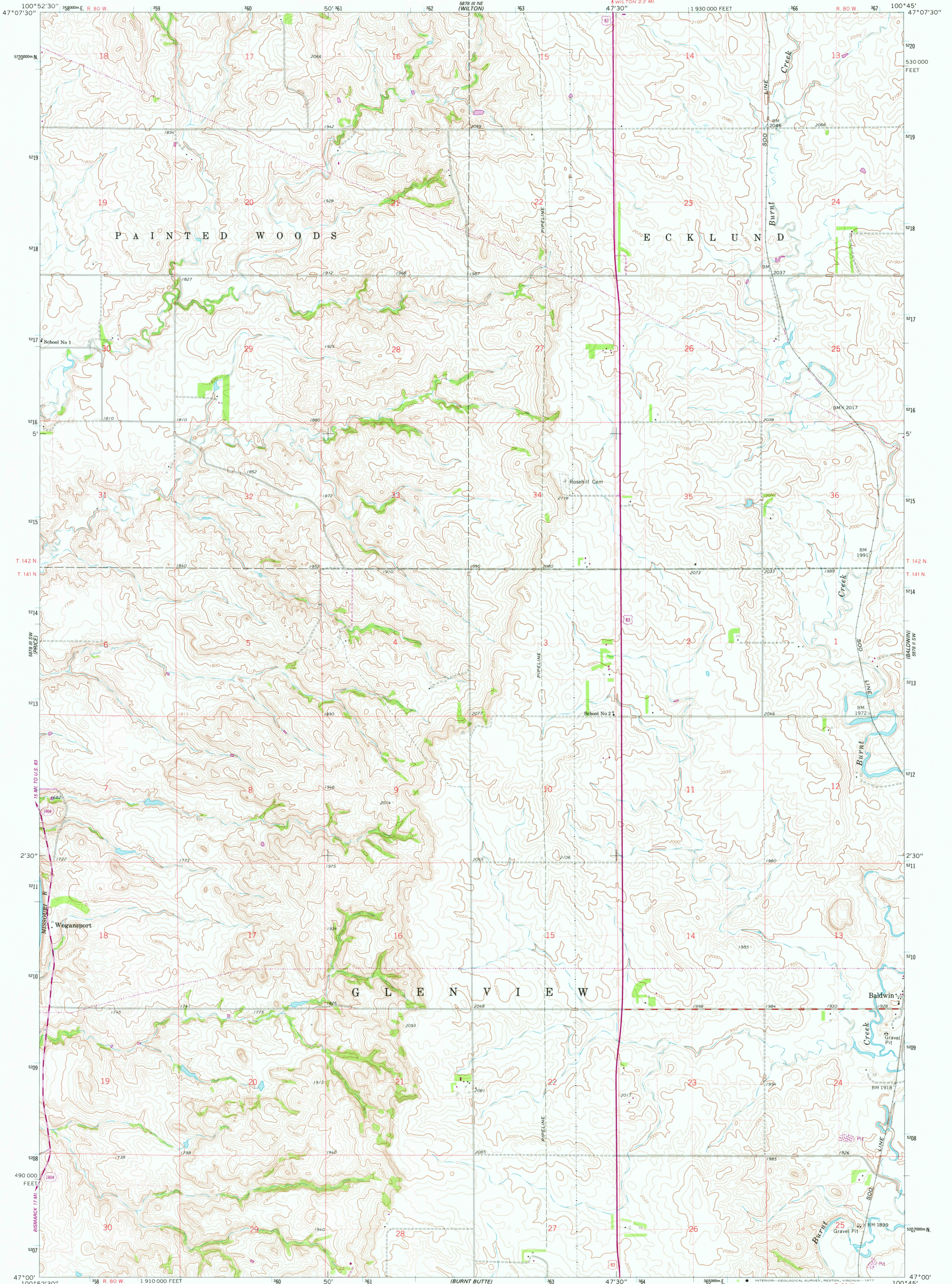


5878 III SW (SPRINGER)

UNITED STATES DEPARTMENT OF THE INTERIOR GEOLOGICAL SURVEY

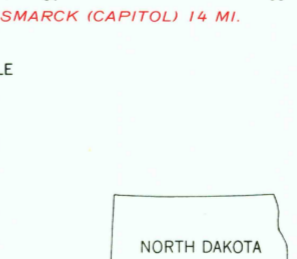
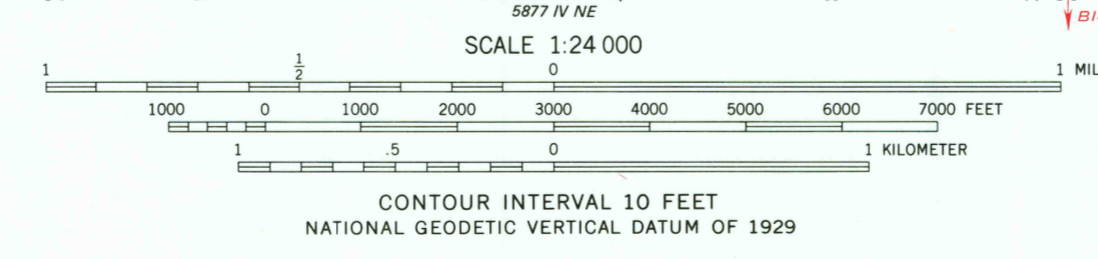
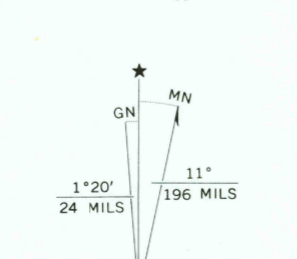
WILTON SE QUADRANGLE NORTH DAKOTA - BURLEIGH CO. 7.5 MINUTE SERIES (TOPOGRAPHIC) SE/4 WILTON 15' QUADRANGLE

5878 III NW (GRASS LAKE)



5878 III SW (SPRINGER)

Mapped, edited, and published by the Geological Survey Control by USGS and USC&GS Topography by photogrammetric methods from aerial photographs taken 1965. Field checked 1966 Polyconic projection. 1927 North American datum 10,000-foot grid based on North Dakota coordinate system, south zone 1000-meter Universal Transverse Mercator grid ticks, zone 14, shown in blue Fine red dashed lines indicate selected fence and field lines where generally visible on aerial photographs This information is unchecked Revisions shown in purple compiled from aerial photographs taken 1976. This information not field checked



ROAD CLASSIFICATION Heavy-duty Light-duty Medium-duty Unimproved dirt U.S. Route State Route USGS Historical File Topographic Division WILTON SE, N. DAK. SE/4 WILTON 15' QUADRANGLE N4700-W10045/7.5 1966 PHOTOREVISED 1976 AMS 5878 III SE-SERIES V871

5878 III NW (GRASS LAKE)

2900 MAR 15 1978