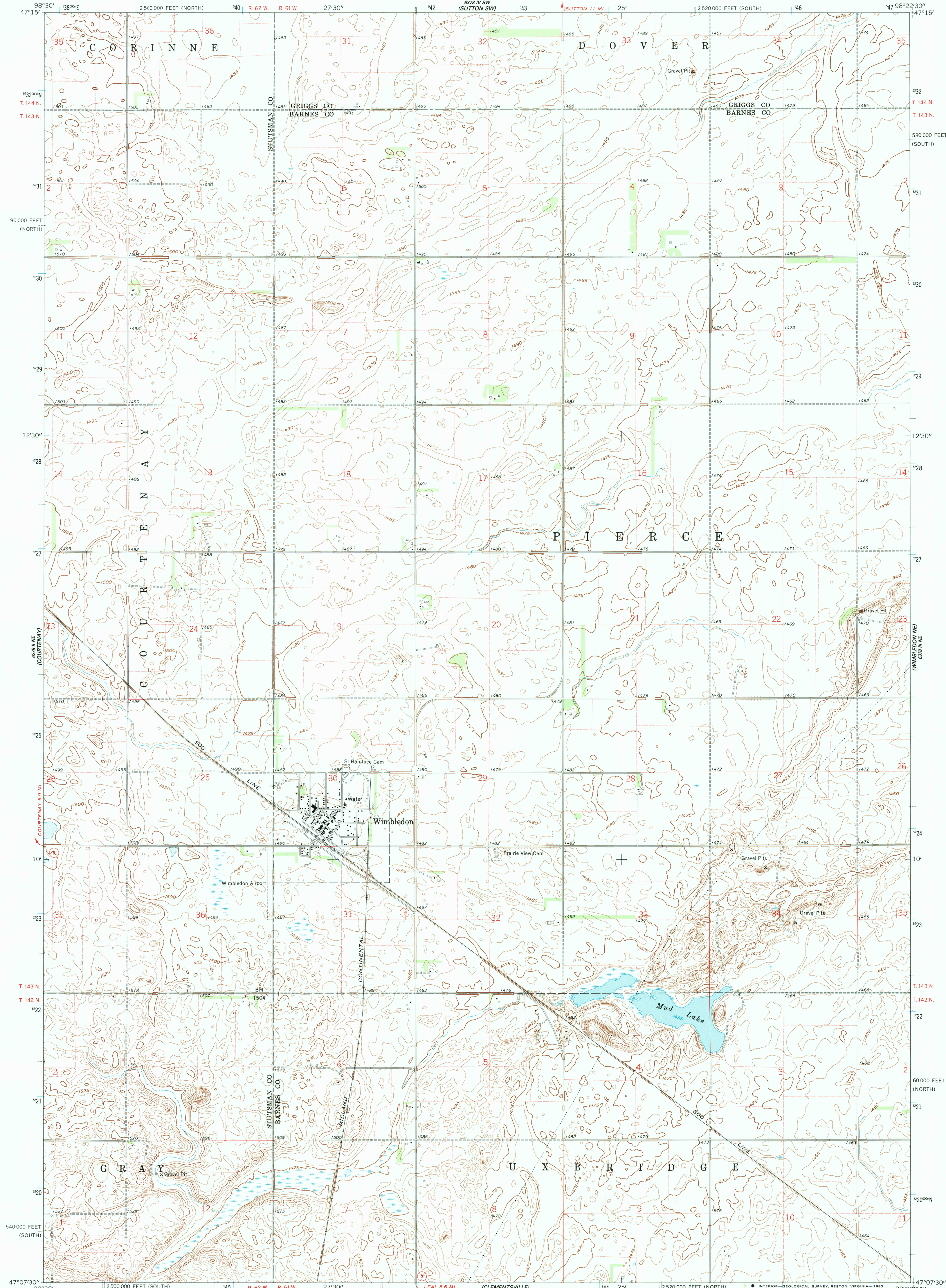
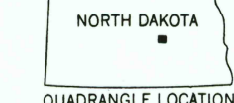
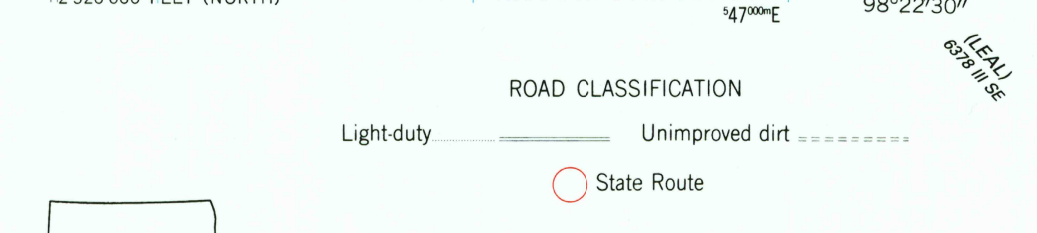
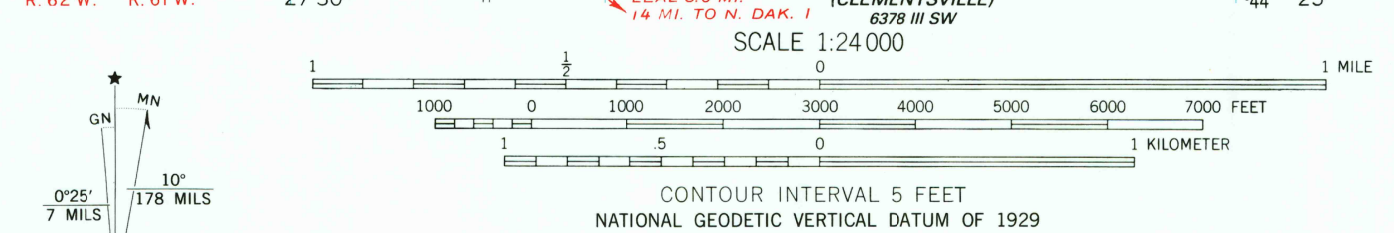


UNITED STATES
DEPARTMENT OF THE INTERIOR
GEOLOGICAL SURVEY

WIMBLEDON QUADRANGLE
NORTH DAKOTA
7.5 MINUTE SERIES (TOPOGRAPHIC)



Mapped, edited, and published by the Geological Survey as part of the Department of the Interior program for the development of the Missouri River Basin Control by USGS and USC&GS
Topography by photogrammetric methods from aerial photographs taken 1960. Field checked 1961
Polyconic projection. 1927 North American datum 10,000-foot grids based on North Dakota coordinate system, north and south zones
1000-meter Universal Transverse Mercator grid ticks, zone 14, shown in blue
To place on the predicted North American Datum 1983 move the projection lines 5 meters north and 29 meters east as shown by dashed corner ticks
Fine red dashed lines indicate selected fence and field lines where generally visible on aerial photographs. This information is unchecked



WIMBLEDON, N. DAK.
N4707.5-W9822.57.5

1961
DMA 6378 III NW-SERIES V871

MAR 30 1964
RETURN TO:
USGS MMD HISTORICAL MAP ARCHIVES